



## Dike Tanks

HT-1078

Dike tanks are a versatile aboveground secondary containment alternative. The impervious steel dike contains spills from the tank, piping and associated equipment, and it prevents their release into the environment.

The entire unit meets UL-142® and NFPA 30 specifications for primary and secondary containment. In addition to our standard features and options, we can also supply rain shields or gabled, shed or rolled-top canopies to keep out rain, snow and debris.

### Dike Tank Features

- The integral spill-containment chamber around the fill connection provides an overflow pipe to divert any spilled product into the containment dike
- A large overflow chute ensures that any overflow will be diverted from the emergency vent directly into the dike
- Removable rain shields minimize rain, snow and debris accumulation in the containment area while allowing for easy visual inspection and access for maintenance
- Available with the safety of UL-2085 Fireguard®, it is listed for “Insulated Secondary Containment Protected Type” AST

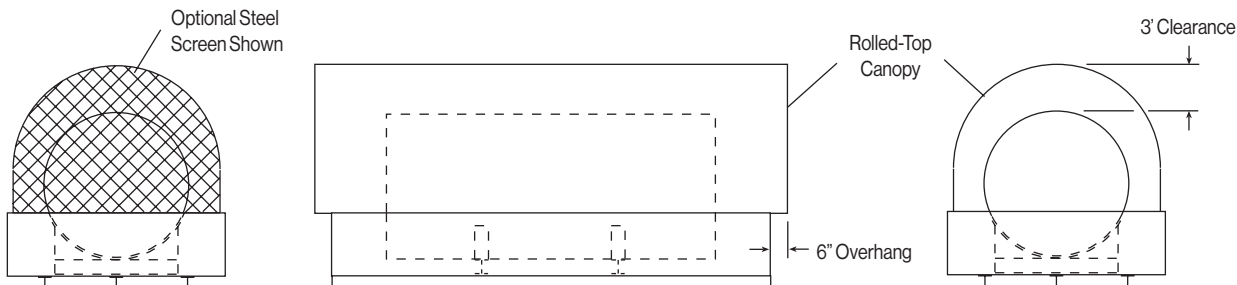
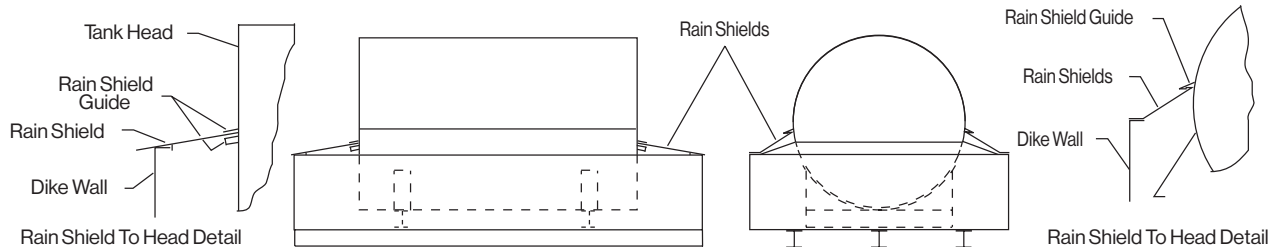
### Options

For added protection, custom fit rainshields are available to keep out rain, snow and other elements.

To completely cover the dike and tank, Highland manufactures the Rolled-Top Dike Canopy. Designed and engineered ladders, platforms and walkways are available to customize a dike tank to your specific needs.

These options can be fitted to the inside and outside of the dike and the outside of the tank.

# Drawing & Details



Volume Gallons	Tank Dimensions		Dike Dimensions		
	Diameter	Length	Length	Width	Height
240	3'-2"	3'-4"	4'-0"	5'-9"	1'-8"
300	3'-2"	4'-0"	7'-0"	4'-0"	1'-8"
500	4'-0"	5'-5"	7'-5"	6'-0"	1'-8"
1,000	4'-0"	10'-9"	12'-9"	6'-0"	2'-0"
1,000	5'-4"	6'-0"	9'-2"	8'-0"	2'-0"
1,500	5'-4"	9'-0"	13'-10"	8'-0"	2'-0"
2,000	5'-4"	12'-0"	16'-0"	8'-0"	2'-4"
2,500	5'-4"	15'-0"	17'-6"	8'-0"	2'-10"
3,000	5'-4"	18'-0"	22'-0"	8'-0"	2'-8"
4,000	5'-4"	24'-0"	28'-0"	8'-0"	2'-8"
5,000	8'-0"	13'-4"	17'-0"	10'-10"	4'-0"
6,000	8'-0"	16'-0"	20'-6"	10'-10"	4'-0"
8,000	8'-0"	21'-4"	27'-6"	10'-10"	4'-0"
10,000	8'-0"	26'-8"	35'-0"	10'-10"	4'-0"
12,000	8'-0"	32'-0"	36'-8"	12'-0"	4'-0"
15,000	10'-0"	25'-6"	31'-0"	12'-0"	6'-0"
20,000	10'-0"	34'-0"	41'-0"	12'-0"	6'-0"
25,000	10'-0"	42'-6"	51'-0"	12'-0"	6'-0"
30,000	10'-0"	51'-2"	61'-4"	12'-0"	6'-0"

Dike dimensions shown are for 110% containment dikes.  
Contact Highland Tank for details on 150% containment dikes.



**Stoystown, PA**  
One Highland Rd.  
Stoystown, PA 15563  
(814) 893-5701

**Manheim, PA**  
4535 Elizabethtown Rd.  
Manheim, PA 17545  
(717) 664-0600

**Watervliet, NY**  
958 19th St.  
Watervliet, NY 12189  
(518) 273-0801

**Greensboro, NC**  
2700 Patterson St.  
Greensboro, NC 27407  
(336) 218-0801

**Friedens, PA**  
1510 Stoystown Rd.  
Friedens, PA 15541  
(814) 443-6800

**Clarkston, MI**  
4701 White Lake Rd.  
Clarkston, MI 48346  
(248) 625-8700

**Mancelona, MI**  
9517 Lake St.  
Mancelona, MI 49659  
(231) 587-8412