

Highland Triple Basin Interceptor Tanks



Highland Tank

Nominal Capacity (Gallons)	Sludge Capacity (Cubic Ft.)	Flow Rate (g.p.m.)	Dimensions		Inlet / Outlet	Thickness Head / Shell	Approximate Wt. (lbs.)
			Diameter	Length			
550	10	55	3'6"	7'9"	4"	7ga.	1,253
1,000	18	100	4'0"	10'9"	6"	7ga.	1,734
2,000	35	200	5'4"	12'0"	6"	7ga.	2,519
3,000	53	300	5'4"	18'0"	8"	7ga.	3,323
4,000	71	400	5'4"	24'0"	8"	7ga.	4,339
5,000	89	500	6'0"	23'10"	8"	1/4"	6,646
6,000	107	600	6'0"	28'8"	10"	1/4"	8,547
7,000	125	700	7'0"	24'4"	10"	1/4"	8,361
8,000	143	800	7'0"	28'0"	10"	1/4"	8,912
9,000	160	900	8'0"	24'0"	12"	1/4"	9,632
10,000	178	1,000	8'0"	26'8"	12"	1/4"	10,853
12,000	214	1,200	8'0"	32'0"	12"	1/4"	12,279
15,000	267	1,500	10'0"	25'6"	14"	5/16"	16,958
20,000	356	2,000	10'6"	31'0"	16"	5/16"	20,299
25,000	445	2,500	10'6"	38'9"	18"	3/8"	27,942
30,000	535	3,000	10'6"	46'6"	20"	3/8"	33,089
40,000	713	4,000	12'0"	47'3"	24"	3/8"	40,121
50,000	891	5,000	12'0"	59'6"	24"	3/8"	47,187

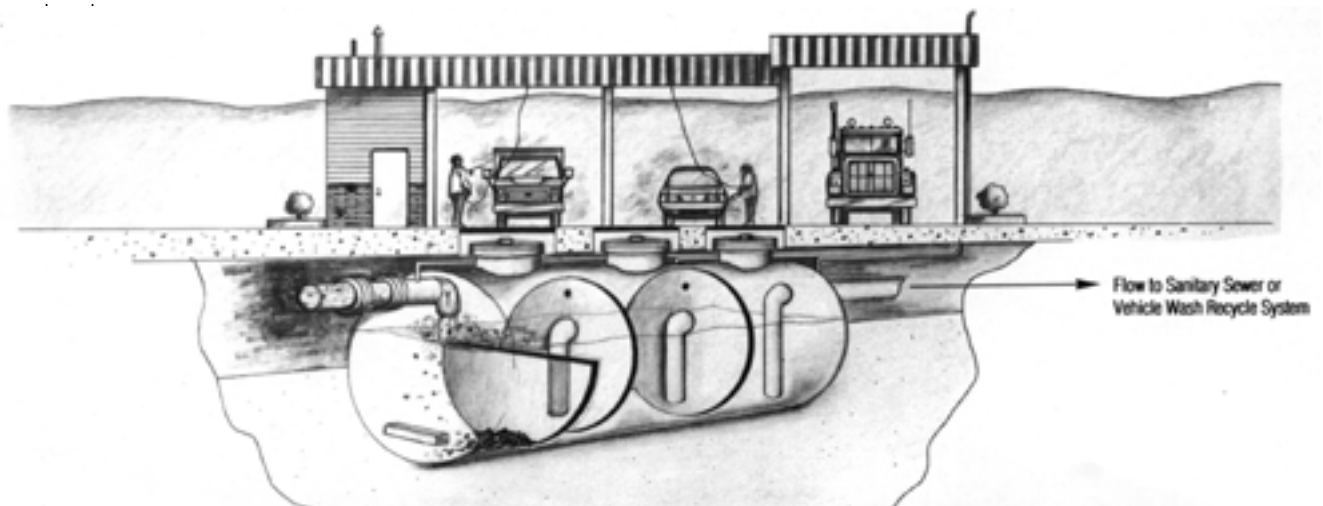
HT-TB Interceptors

Highland HT-TB Interceptors are wastewater treatment tanks engineered to intercept and collect sand, grit, grease and free oil (hydrocarbons and other petroleum products) from storm water runoff, spills, or vehicle cleaning operations. Designed to accept gravity flow, HT-TB Interceptors retain wastewater long enough to allow those contaminants with specific gravities different than water, to s

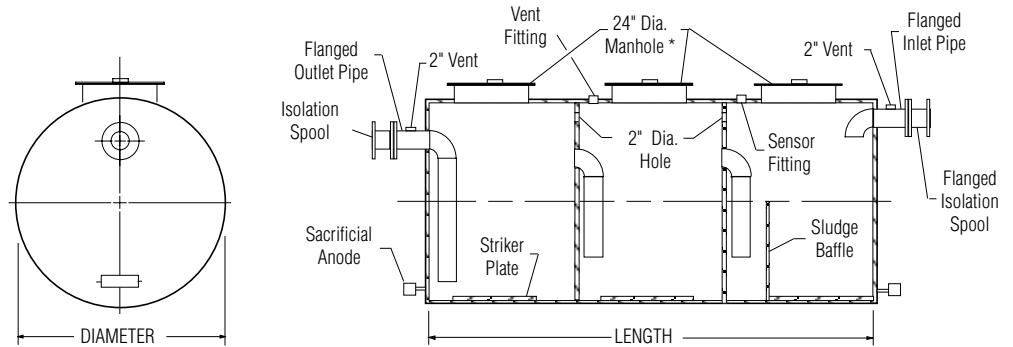
HT-TB Interceptors are designed for use where they can be hooked up to a sanitary sewer that does not require a high performance discharge. The HT-TB can also be used in vehicle washing applications in conjunction with a Recycle Wash System. All HT-TB Interceptors are manufactured to rigid specifications meeting STI-P3® or ACT-100-U® codes. Highland STI-P3® and

ACT-100-U® Interceptors are warranted for 30 years against external corrosion and for one (1) year against failure due to defective materials and workmanship.

A limited number of options including manway extensions are available upon request. Please contact Highland Tank & Mfg. Co. for details.



HT-TB General Arrangement



Triple basin interceptor shown, double and single basin also available. * Manway extensions are available as an option

Recommended Guide Specification

Provide and install _____ Highland Tank & Mfg. Co. _____ gallon capacity, Model HT-TB Triple Basin Interceptor(s). Interceptor(s) shall be _____ diameter and _____ long, constructed of _____ ga./in. mild carbon steel.

Application

The Triple Basin Interceptor shall be a gravity-type, wastewater treatment tank designed to intercept and collect sand, grit, grease and free oil (hydrocarbons and other petroleum products). Wastewater will then flow to either:

- 1) A high performance Highland Tank & Mfg. Co. Oil/Water Separator for treatment prior to final discharge;
- 2) To a Sanitary Sewer for final discharge;
- 3) When used in conjunction with a Recycle Vehicle Wash System, can be pumped to the Reclaim Tank; or
- 4) When used as part of a hold-and-haul system, the wastewater is allowed to accumulate in the after-basin and held until full. It can then be pumped out by a vacuum truck and hauled to a Municipal Wastewater Treatment Plant.

Design Criteria

- The Interceptor's Corrosion Control System shall be in strict accordance with either STI-P3® or ACT-100-U® specifications, with a 30 year warranty. Manufacturer must be a licensee of the Steel Tank Institute. No assigning or subcontracting of Steel Tank Institute license or warranty shall be permitted.
- The Interceptor shall be the standard product of a steel tank manufacturer regularly engaged in the production of such equipment. No subcontracting of tank fabrication shall be permitted.

- The Interceptor shall be fabricated, inspected and tested for leakage before shipment from the factory by manufacturer as a completely assembled vessel ready for installation.
- The Interceptor shall be a cylindrical, horizontal, atmospheric-type steel vessel intended for the separation and storage of sand, grit, grease and free oil (hydrocarbons and other petroleum products). The Interceptor shall have the structural strength to withstand static and dynamic hydraulic loading while empty and during operating conditions.

- The Interceptor shall consist of flanged inlet and outlet connections, fore-basin with heavy duty sludge baffle, fore-basin downcomer positioned to prevent discharge of free oil that has been separated from the wastewater, midbasin, midbasin downcomer, after-basin, after-basin effluent downcomer, three (3) large manway pump-out access, heavy-duty striker plates, vent fitting, gauge fitting, and lifting lugs.

Tank Accessories: Refer to the Highland Tank & Mfg. Co. Oil/Water Separator Binder.

Please visit us at www.highlandtank.com



One Highland Road
Stoystown, PA 15563
814-893-5701
FAX 893-6126

99 West Elizabethtown Road
Manheim, PA 17545
717-664-0600
FAX 664-0617

958 19th Street
Watervliet, NY 12189
518-273-0801
FAX 273-1365

2225 Chestnut Street
Lebanon, PA 17042
717-664-0602
FAX 664-0631

2700 Patterson Street
Greensboro, NC 27407
336-218-0801
FAX 218-1292

354 Route 108
Somersworth, NH 03878
603-692-2012
FAX 692-2014