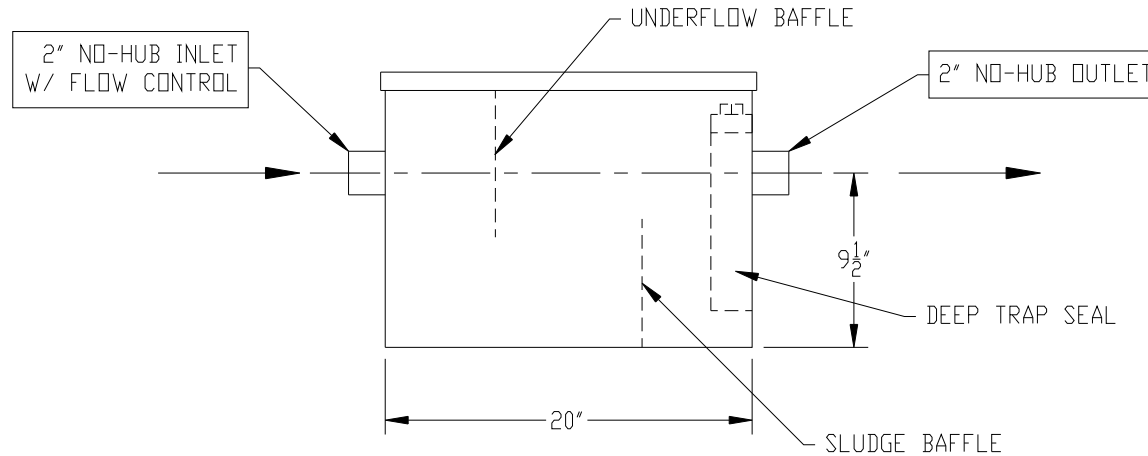
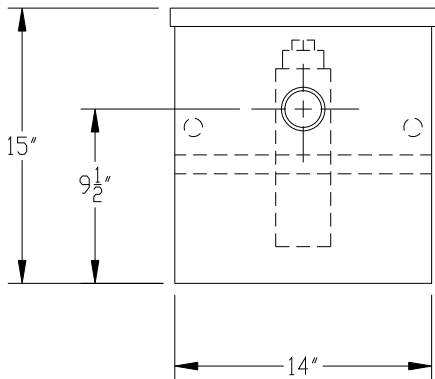
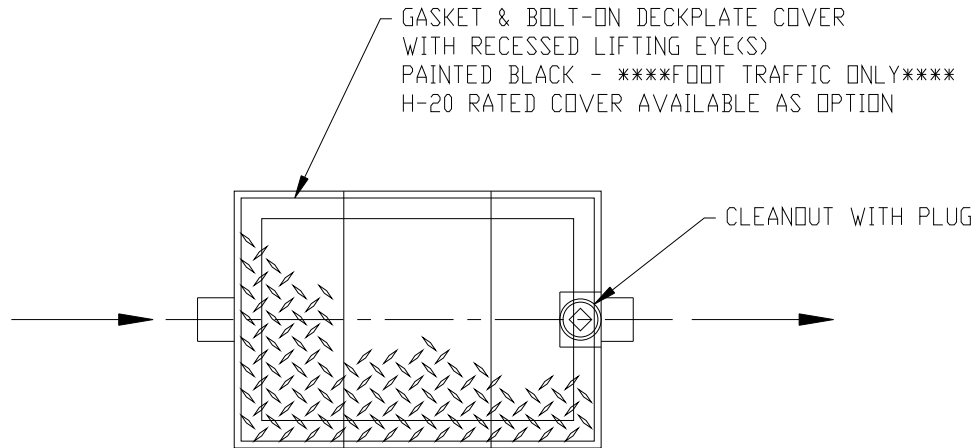


NOTE:  
STANDARD TANK HEIGHT SHOWN  
CUSTOMER TO VERIFY ACTUAL  
HEIGHT REQUIRED



NOTE :  
ALL RIGHTS RESERVED. THIS DRAWING OR ANY PART THEREOF MUST  
NOT BE REPRODUCED IN ANY FORM WITHOUT THE WRITTEN PERMISSION  
OF HIGHLAND TANK.  
HIGHLAND TANK SHALL BE RESPONSIBLE ONLY FOR ITEMS INDICATED  
ON THIS FABRICATION DRAWING UNLESS OTHERWISE NOTED. CUSTOMER  
IS RESPONSIBLE FOR VERIFYING CORRECTNESS OF SIZE / LOCATION  
OF FITTINGS , ACCESSORIES & COATINGS SHOWN ON THIS DRAWING

NOTE: ALL DIMENSIONS IN INCHES UNLESS NOTED OTHERWISE

### GENERAL SPECIFICATIONS

NO. REQ'D:  
MODEL: MGI-10 CS  
MAXIMUM FLOW RATE: 10 GPM  
MATERIAL: 12 GA CARBON STEEL  
SURFACE PREP:  
SSPC-SP 10 BLAST ALL SURFACES  
INT. & EXT. COATING: POLYURETHANE  
STATIC WATER CAPACITY: 10 GAL  
GREASE HOLDING CAPACITY: 20 LBS  
APPROX. DRY WEIGHT: 60 LBS

### GENERAL NOTES

- ALL PLUMBING CONNECTIONS ARE  
SUBJECT TO LOCAL CODES

### REVISIONS



MANUAL GREASE INTERCEPTOR  
MGI-10 CS

CUSTOMER:

PROJECT:

QUOTE NO:

SCALE: DATE: DWG. BY: CHK'D BY:

DIMENSION TOLERANCE: ± 1" NTS 12/20/10 MGS MGI-10 CS