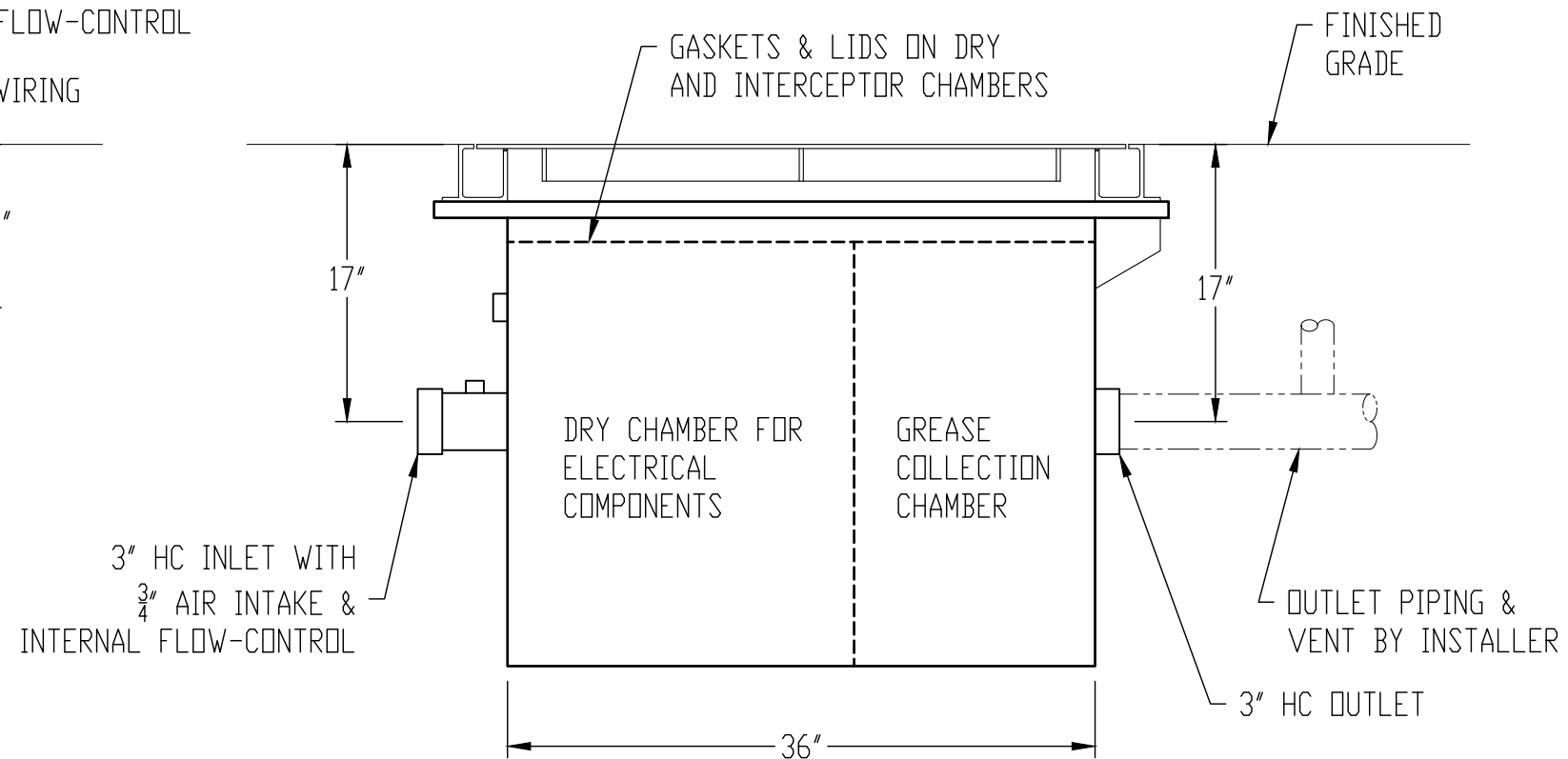
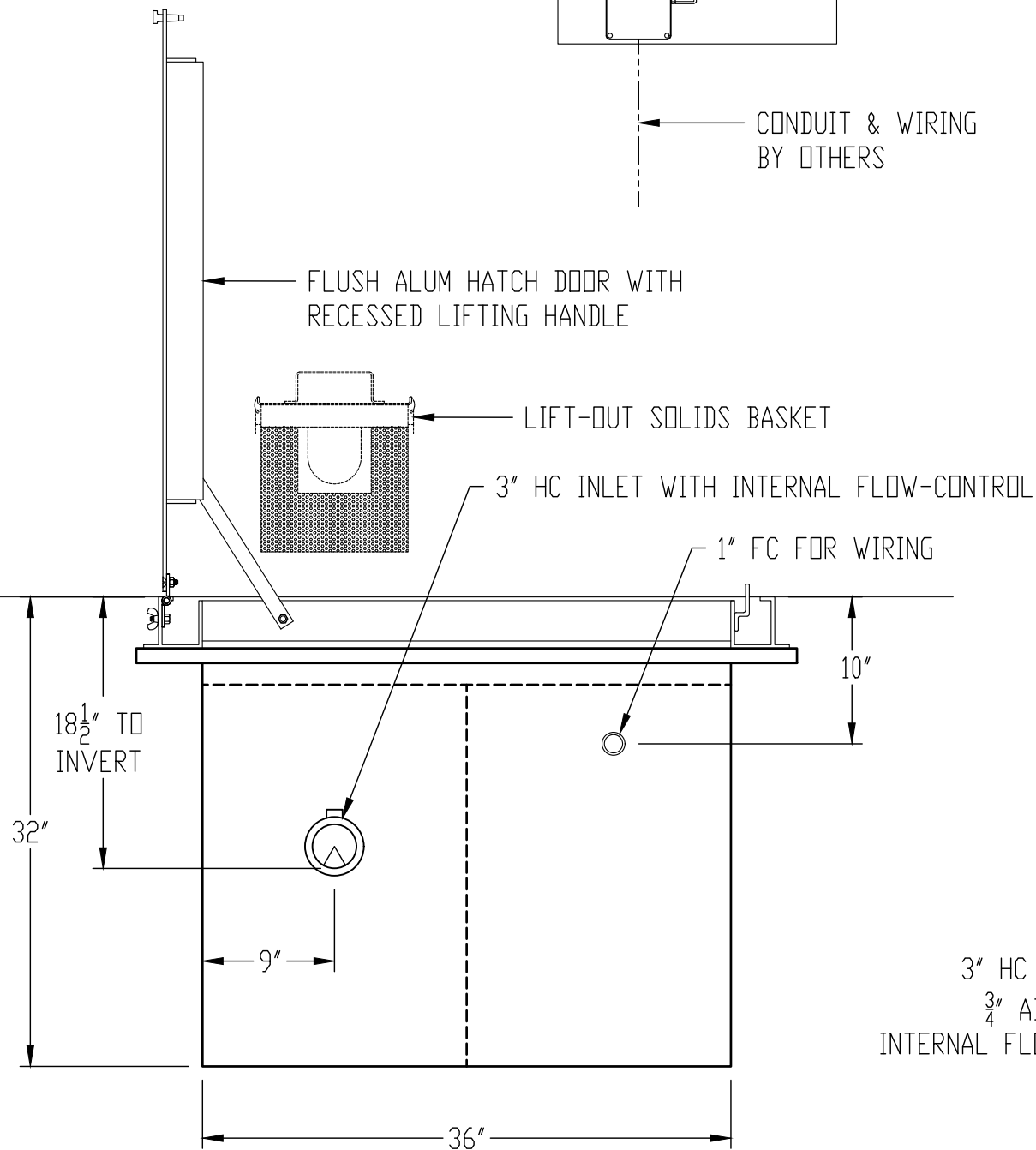
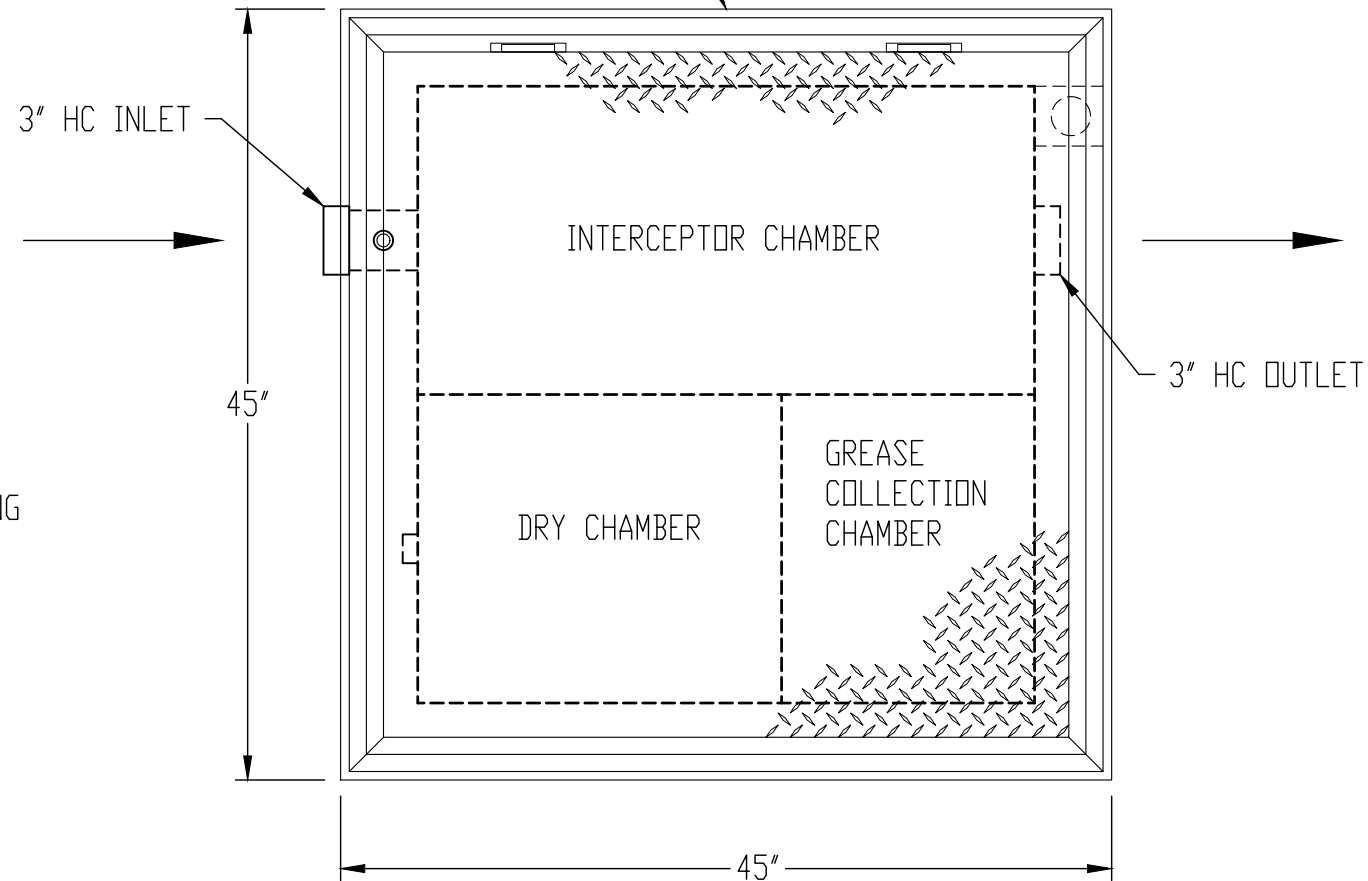


PEDESTRIAN-RATED ALUMINUM DIAMOND-PLATE HATCH  
W/ FLUSH LIFT HANDLE, HOLD-OPEN ARM & GASKET  
\*\*\* FOOT TRAFFIC ONLY \*\*\* H-20 RATING OPTIONAL



## GENERAL SPECIFICATIONS

QUANTITY: ONE (1)  
MODEL: AGI-25 FM  
MAXIMUM FLOW RATE: 25 GPM  
STATIC CAPACITY: 37.9 GALLONS  
GREASE HOLDING CAPACITY: 288 LBS  
RETENTION TIME: 90.9 SEC  
TYPE: SINGLE WALL, UNDERGROUND  
MATERIAL: 10 GA 304 STAINLESS STEEL  
BUILT IN ACCORDANCE WITH U.L. 1D42

## NOTES

DRAWING SHOWS STANDARD TANK HEIGHT DIMENSION FROM  
INLET/OUTLET FITTINGS TO FINISHED FLOOR - CUSTOMER  
MUST SPECIFY HEIGHT DIMENSION MODIFICATIONS REQUIRED TO  
MEET PROJECT PLUMBING CONDITIONS

DIGITAL TIMER MUST BE PLUGGED INTO A DEDICATED  
20 AMP GROUND FAULT CIRCUIT INTERRUPTER (GFCI)  
RECEPTACLE

GEAR MOTOR RATED AT 0.44 FLA, 115V - 60 Hz

IMMERSION HEATERS RATED AT 1,500W, 115V

ALL ELECTRICAL AND PLUMBING CONNECTIONS ARE  
SUBJECT TO LOCAL CODES

HIGHLAND TANK OFFERS A WIDE VARIETY OF OPTIONS  
AND CUSTOMIZATIONS TO ACCOMMODATE PROJECT  
CONDITIONS - CONTACT HIGHLAND TANK FOR MORE  
INFORMATION

## CUSTOMER APPROVAL

THE CUSTOMER HAS REVIEWED THIS  
DRAWING AND VERIFIED THE ACCURACY  
OF ALL INFORMATION AND DIMENSIONS.

SIGNED: \_\_\_\_\_

DATE: \_\_\_\_\_

NOTE:  
ALL RIGHTS RESERVED. THIS DRAWING, OR ANY PART THEREOF, MUST NOT  
BE REPRODUCED IN ANY FORM WITHOUT WRITTEN PERMISSION FROM  
HIGHLAND TANK. UNLESS OTHERWISE NOTED, HIGHLAND TANK SHALL BE  
RESPONSIBLE ONLY FOR ITEMS INDICATED ON THIS FABRICATION DRAWING.  
THE CUSTOMER IS RESPONSIBLE FOR VERIFYING THE CORRECTNESS OF  
THE TYPE, SIZE, AND LOCATION OF ALL FITTINGS, ACCESSORIES, AND  
COATINGS SHOWN ON THIS DRAWING.



GreaseStopper® AUTOMATIC GREASE INTERCEPTOR  
AGI-25 FM

CUSTOMER: \_\_\_\_\_

PROJECT: \_\_\_\_\_

QUOTE NO.: \_\_\_\_\_

ORDER: \_\_\_\_\_

SCALE: DATE: DWG. BY: DWG. NO.:  
NTS 1/20/18 MGS AGI-25 FM

DIMENSION TOLERANCE: ± 1"