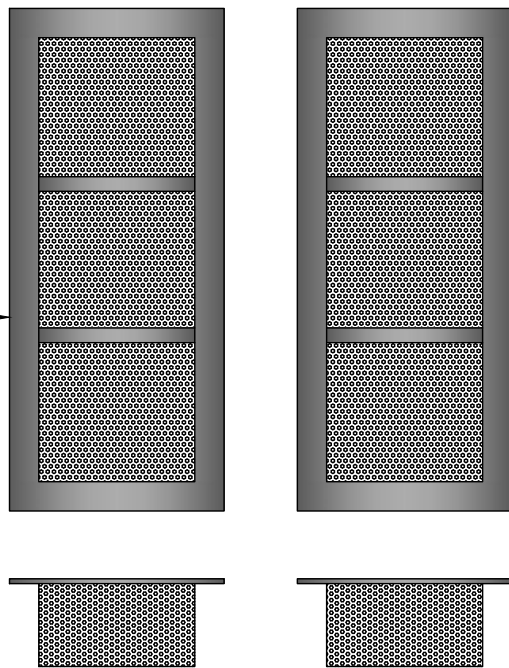
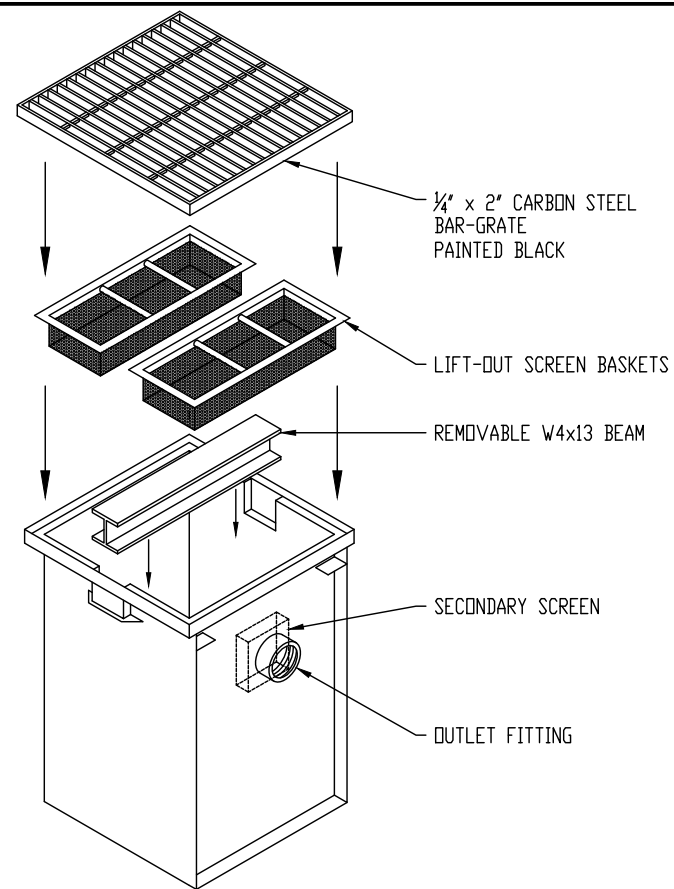


(2) REMOVABLE  
STAINLESS STEEL  
SCREEN BASKETS



REMOVABLE W4x13 BEAM



## GENERAL SPECIFICATIONS

QUANTITY: ONE (1)  
MODEL: CB-55  
STATIC CAPACITY: 55 GALLONS  
TYPE: SINGLE WALL, UNDERGROUND  
MATERIAL: 10 GA CARBON STEEL  
CONTINUOUS WELD INTERIOR AND EXTERIOR SEAMS  
SURFACE PREP: SSPC-SP 10 BLAST ALL SURFACES  
INT. & EXT. COATING: CHEMLINE 2240 - 15 MILS DFT

## NOTES

STANDARD TANK MATERIAL IS COATED CARBON STEEL -  
STAINLESS STEEL CONSTRUCTION IS OPTIONAL

DRAWING SHOWS STANDARD TANK HEIGHT DIMENSION FROM  
OUTLET FITTING TO FINISHED GRADE - CUSTOMER MUST  
SPECIFY HEIGHT DIMENSION MODIFICATIONS REQUIRED TO MEET  
PROJECT CONDITIONS

DOUBLE-WALL TANKS AND LEAK DETECTION EQUIPMENT ARE  
AVAILABLE AS OPTIONS

## CUSTOMER APPROVAL

THE CUSTOMER HAS REVIEWED THIS  
DRAWING AND VERIFIED THE ACCURACY OF  
ALL INFORMATION AND DIMENSIONS.

SIGNED: \_\_\_\_\_

DATE: \_\_\_\_\_

NOTE:  
ALL RIGHTS RESERVED. THIS DRAWING, OR ANY PART THEREOF, MUST NOT  
BE REPRODUCED IN ANY FORM WITHOUT WRITTEN PERMISSION FROM  
HIGHLAND TANK. UNLESS OTHERWISE NOTED, HIGHLAND TANK SHALL BE  
RESPONSIBLE ONLY FOR ITEMS INDICATED ON THIS FABRICATION DRAWING.  
THE CUSTOMER IS RESPONSIBLE FOR VERIFYING THE CORRECTNESS OF  
THE TYPE, SIZE, AND LOCATION OF ALL FITTINGS, ACCESSORIES, AND  
COATINGS SHOWN ON THIS DRAWING.



# 55 GALLON CATCH BASIN

CUSTOMER: \_\_\_\_\_

PROJECT: \_\_\_\_\_

QUOTE NO.: \_\_\_\_\_

SCALE: NTS

DATE: 6/15/18

DWG. BY: MGS

DWG. NO.: \_\_\_\_\_

ORDER: \_\_\_\_\_

CB-55

