

## GENERAL SPECIFICATIONS

QUANTITY: ONE (1)  
MODEL: AGI-75 FM  
MAXIMUM FLOW RATE: 75 GPM  
STATIC CAPACITY: 74.8 GALLONS  
GREASE HOLDING CAPACITY: 455 LBS  
RETENTION TIME: 59.8 SEC  
TYPE: SINGLE WALL, UNDERGROUND  
MATERIAL: 10 GA 304 STAINLESS STEEL  
BUILT IN ACCORDANCE WITH U.L. 1D42

## NOTES

DRAWING SHOWS STANDARD TANK HEIGHT DIMENSION FROM INLET/OUTLET FITTINGS TO FINISHED FLOOR – CUSTOMER MUST SPECIFY HEIGHT DIMENSION MODIFICATIONS REQUIRED TO MEET PROJECT PLUMBING CONDITIONS

DIGITAL TIMER MUST BE PLUGGED INTO A DEDICATED 20 AMP GROUND FAULT CIRCUIT INTERRUPTER (GFCI) RECEPTACLE

GEAR MOTOR RATED AT 0.44 FLA, 115V – 60 Hz

IMMERSION HEATERS RATED AT 1,500W, 115V

ALL ELECTRICAL AND PLUMBING CONNECTIONS ARE SUBJECT TO LOCAL CODES

HIGHLAND TANK OFFERS A WIDE VARIETY OF OPTIONS AND CUSTOMIZATIONS TO ACCOMMODATE PROJECT CONDITIONS – CONTACT HIGHLAND TANK FOR MORE INFORMATION

### CUSTOMER APPROVAL

THE CUSTOMER HAS REVIEWED THIS DRAWING AND VERIFIED THE ACCURACY OF ALL INFORMATION AND DIMENSIONS.

SIGNED: \_\_\_\_\_

DATE: \_\_\_\_\_

NOTE:  
ALL RIGHTS RESERVED. THIS DRAWING, OR ANY PART THEREOF, MUST NOT BE REPRODUCED IN ANY FORM WITHOUT WRITTEN PERMISSION FROM HIGHLAND TANK. UNLESS OTHERWISE NOTED, HIGHLAND TANK SHALL BE RESPONSIBLE ONLY FOR ITEMS INDICATED ON THIS FABRICATION DRAWING. THE CUSTOMER IS RESPONSIBLE FOR VERIFYING THE CORRECTNESS OF THE TYPE, SIZE, AND LOCATION OF ALL FITTINGS, ACCESSORIES, AND COATINGS SHOWN ON THIS DRAWING.



# Highland Tank®

GreaseStopper® AUTOMATIC GREASE INTERCEPTOR  
AGI-75 FM

CUSTOMER: \_\_\_\_\_

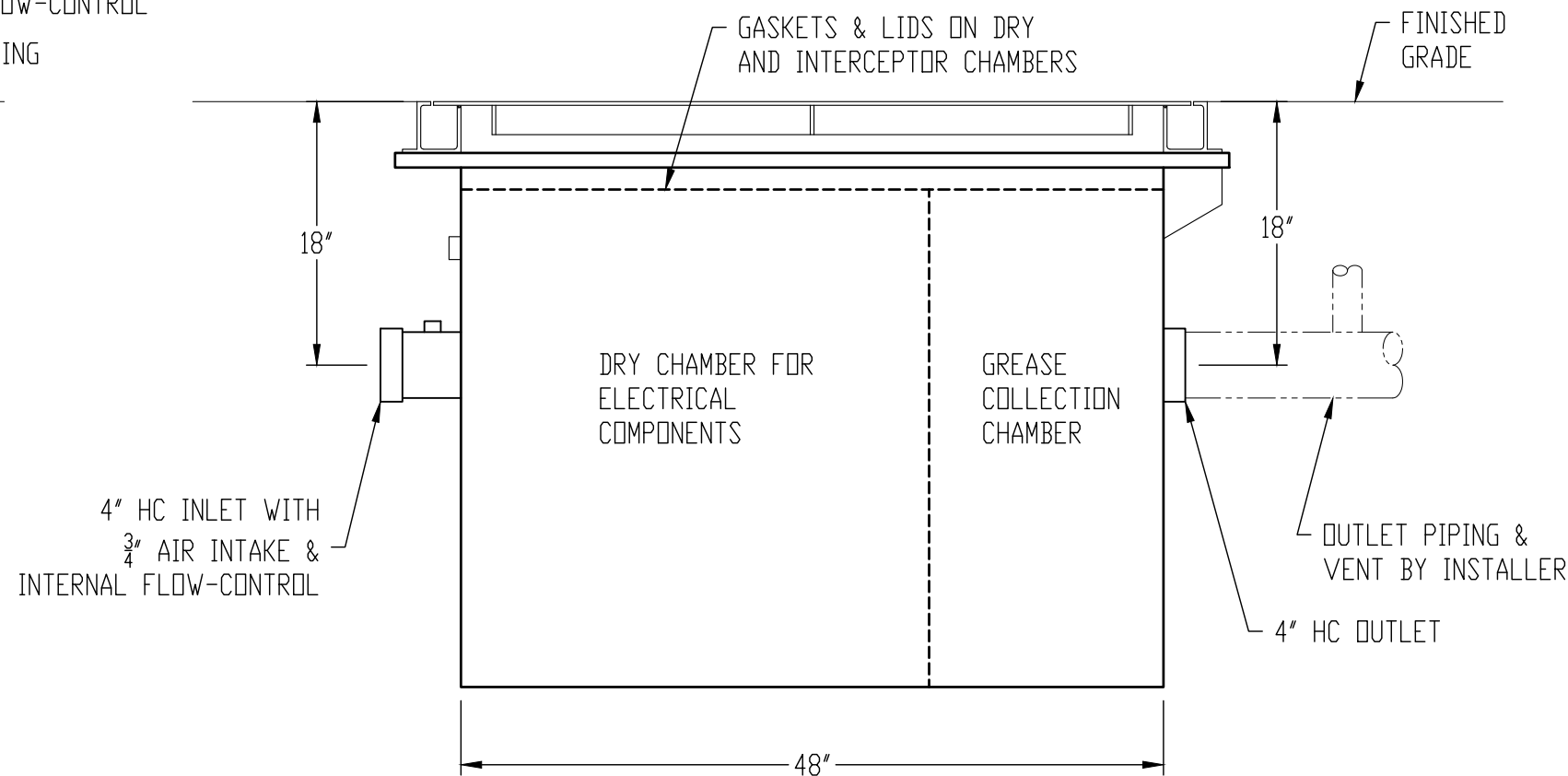
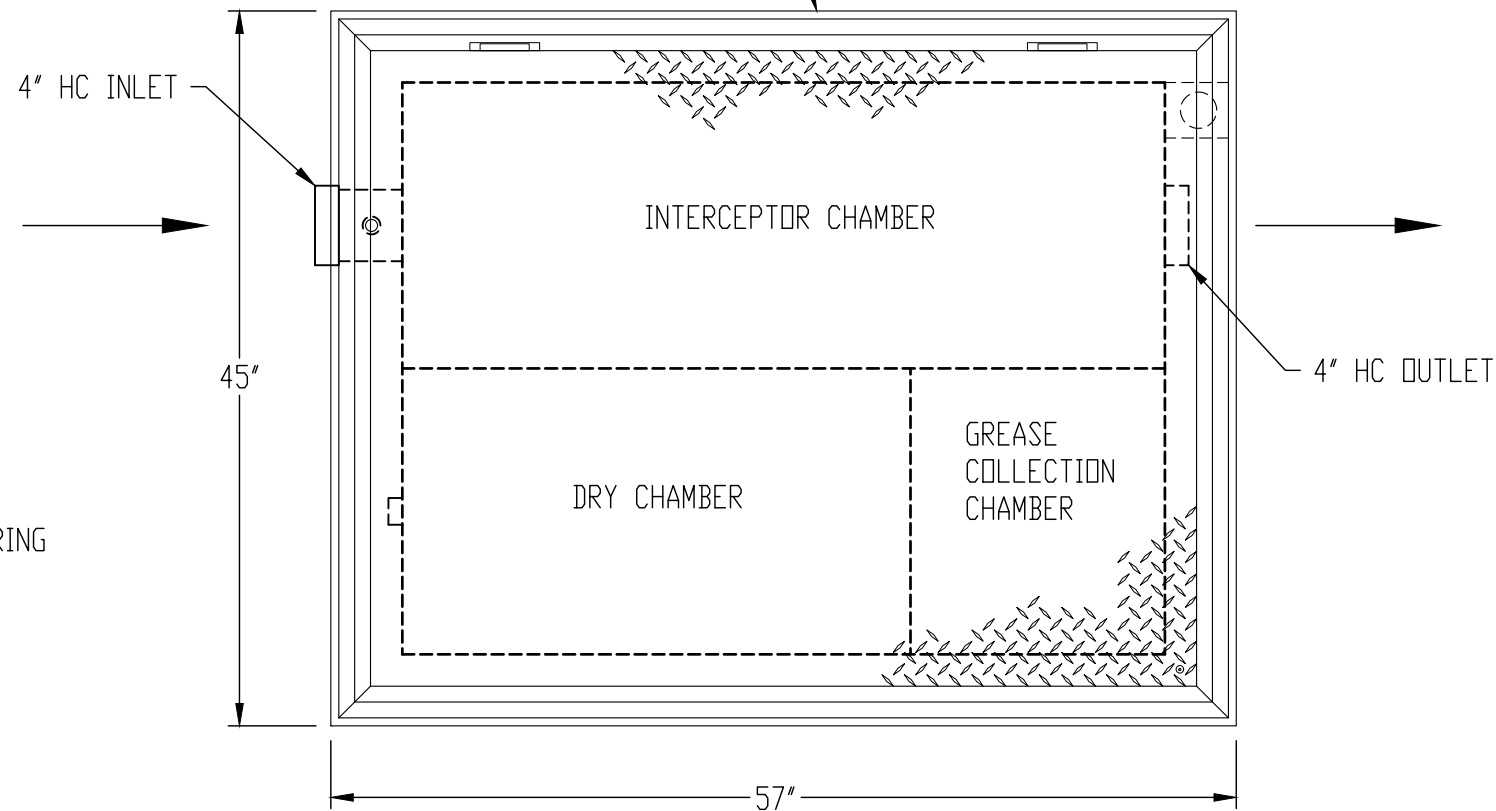
PROJECT: \_\_\_\_\_

QUOTE NO.: \_\_\_\_\_

ORDER: \_\_\_\_\_

SCALE: \_\_\_\_\_ DATE: 1/20/18 DWG. BY: MGS DWG. NO.: AGI-75 FM

PEDESTRIAN-RATED ALUMINUM DIAMOND-PLATE HATCH  
W/ FLUSH LIFT HANDLE, HOLD-OPEN ARM & GASKET  
\*\*\* FOOT TRAFFIC ONLY \*\*\* H-20 RATING OPTIONAL

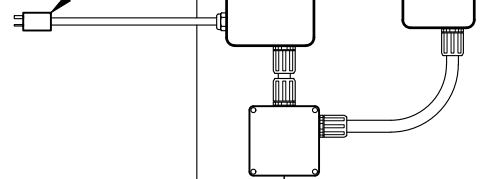


CONTROL PANEL-BOARD SHIPPED LOOSE

HIGH GREASE ALARM

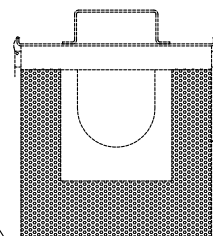
DIGITAL TIMER

12-3 SJ POWER CORD -  
MUST BE CONNECTED TO A  
20 AMP GFI RECEPTACLE



CONDUIT & WIRING  
BY OTHERS

FLUSH ALUM HATCH  
DOOR WITH RECESSED  
LIFTING HANDLE



LIFT-OUT SOLIDS BASKET

4" HC INLET WITH INTERNAL FLOW-CONTROL

1" FC FOR WIRING

