

NOTE:
STANDARD TANK HEIGHT SHOWN
CUSTOMER TO VERIFY ACTUAL
HEIGHT REQUIRED

GASKET & BOLT-ON DECKPLATE COVERS W/ RECESSED LIFTING EYES
PAINTED BLACK - ****FOOT TRAFFIC ONLY****
H-20 RATED COVERS AVAILABLE AS OPTION

CLEANOUT WITH PLUG

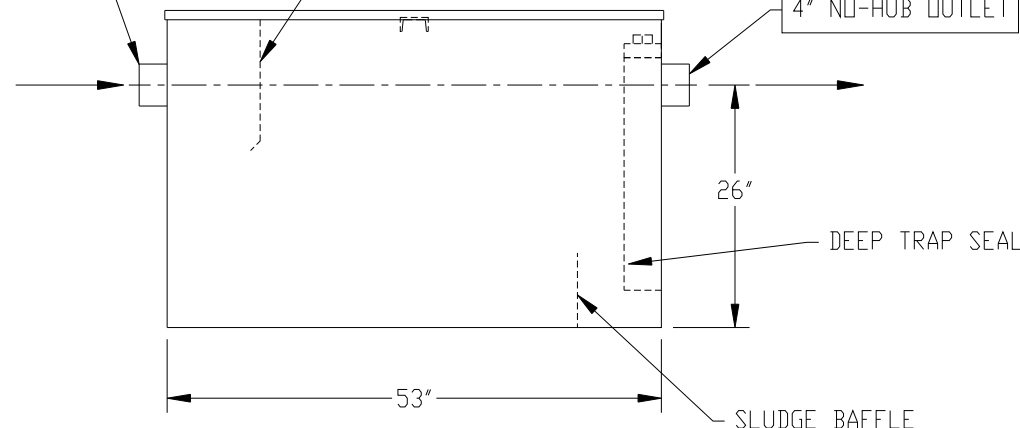
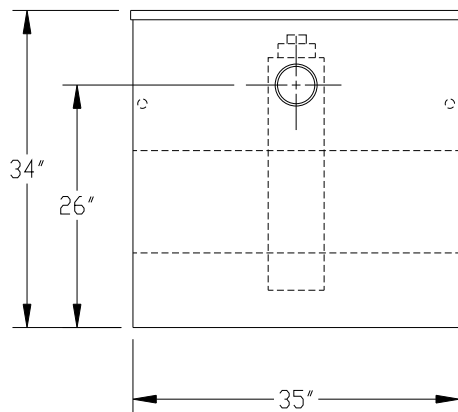
4" NO-HUB INLET
W/ FLOW CONTROL

UNDERFLOW BAFFLE

4" NO-HUB OUTLET

DEEP TRAP SEAL

SLUDGE BAFFLE



NOTE :
ALL RIGHTS RESERVED. THIS DRAWING OR ANY PART THEREOF MUST
NOT BE REPRODUCED IN ANY FORM WITHOUT THE WRITTEN PERMISSION
OF HIGHLAND TANK.
HIGHLAND TANK SHALL BE RESPONSIBLE ONLY FOR ITEMS INDICATED
ON THIS FABRICATION DRAWING UNLESS OTHERWISE NOTED. CUSTOMER
IS RESPONSIBLE FOR VERIFYING CORRECTNESS OF SIZE / LOCATION
OF FITTINGS , ACCESSORIES & COATINGS SHOWN ON THIS DRAWING

NOTE: ALL DIMENSIONS IN INCHES UNLESS NOTED OTHERWISE

GENERAL SPECIFICATIONS

NO. REQ'D:
MODEL: MGI-100 CS
MAXIMUM FLOW RATE: 100 GPM
MATERIAL: 12 GA CARBON STEEL
SURFACE PREP:
SSPC-SP 10 BLAST ALL SURFACES
INT. & EXT. COATING: POLYURETHANE
STATIC WATER CAPACITY: 193 GAL
GREASE HOLDING CAPACITY: 200 LBS
APPROX. DRY WEIGHT: 270 LBS

GENERAL NOTES

- ALL PLUMBING CONNECTIONS ARE
SUBJECT TO LOCAL CODES

REVISIONS



MANUAL GREASE INTERCEPTOR
MGI-100 CS

CUSTOMER:

PROJECT:

QUOTE NO:

SCALE: DATE: DWG. BY: DWG. NO:

DIMENSION TOLERANCE: $\pm 1"$ NTS 12/20/10 MGS MGI-100 CS