



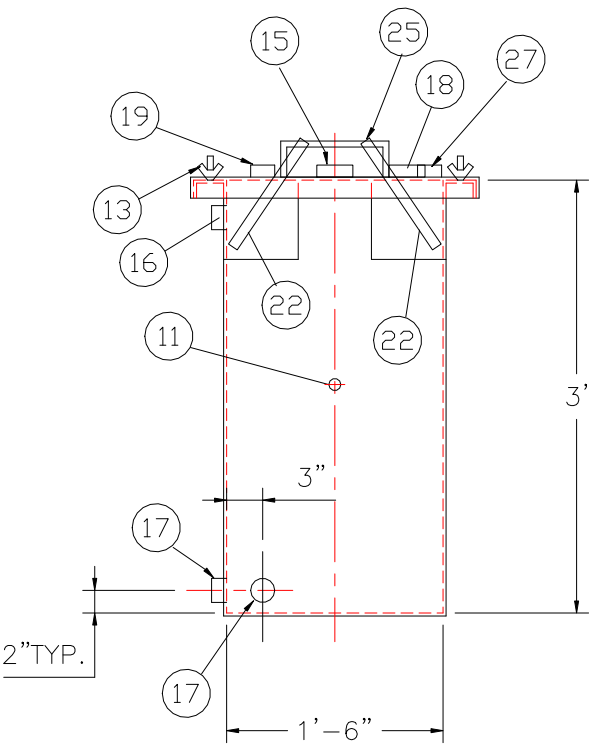
GENERAL SPECIFICATIONS

NO. REQ'D: (1)  
CAPACITY: 100 GALLONS  
TYPE: RECTANGULAR, HTC-G, ABOVEGROUND, SINGLE WALL  
MATERIAL: MILD CARBON STEEL  
FLOW RATE: 5 GPM  
GAUGE:  
SHELL- 10 GA  
HEADS- 10 GA  
SURFACE PREP:  
SSPC NO.10 BLAST ALL INTERIOR SURFACES  
SSPC NO.6 BLAST ALL EXTERIOR SURFACES

| COATING:      | MATERIAL                             | THICKNESS  |
|---------------|--------------------------------------|------------|
| EXTERIOR-     | CHEMPRIME 3001                       | (3-6 MILS) |
|               | CHEMLINE 3300                        | (2-3 MILS) |
|               | TOP COAT "WHITE"                     |            |
| INTERIOR-     | CHEMLINE 4200 PW                     | (15 MILS)  |
| CONSTRUCTION: | BUTT FIT & WELD ALL CORNERS IN & OUT |            |

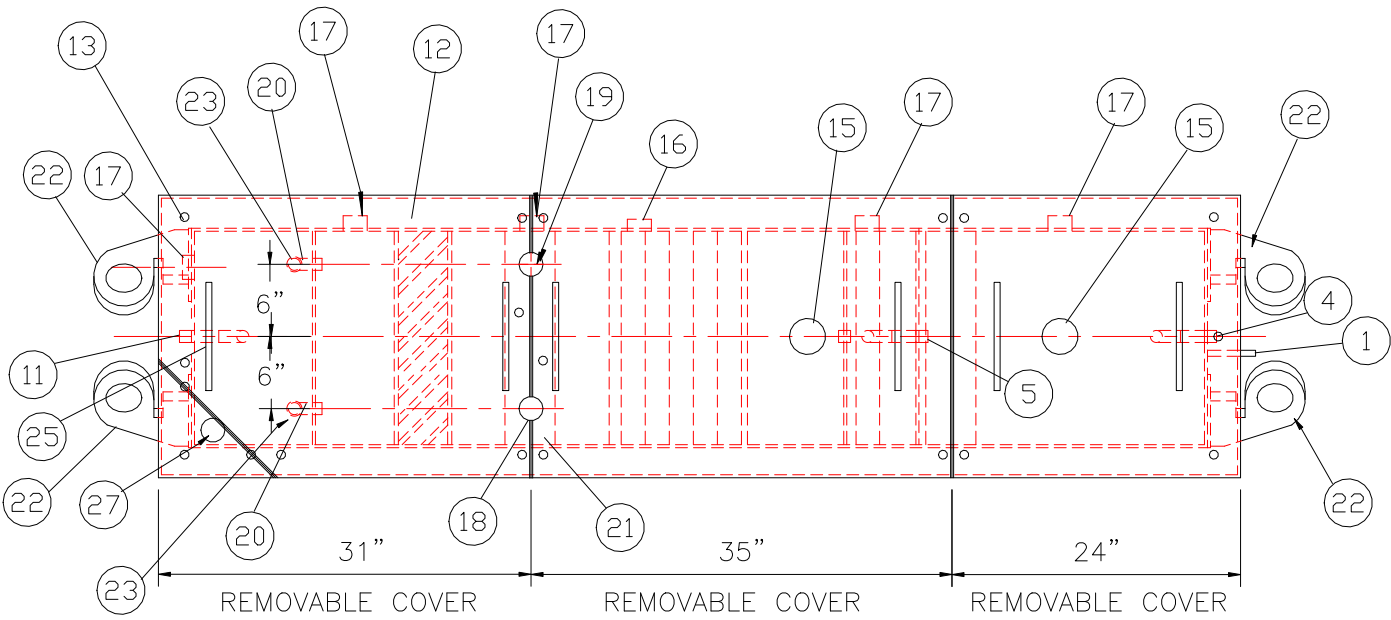
NOTES

- 1. ALL INTERNAL MATERIAL IS 10 GA
- 2. ALL THREADED DRAIN FITTINGS TO HAVE STEEL THREADED PLUGS AND COATED WITH TANK
- 3. ALL OTHER THREADED FITTINGS TO HAVE PVC THREADED PLUGS
- 4. LIFTING LUGS HAVE REINFORCING PLATES

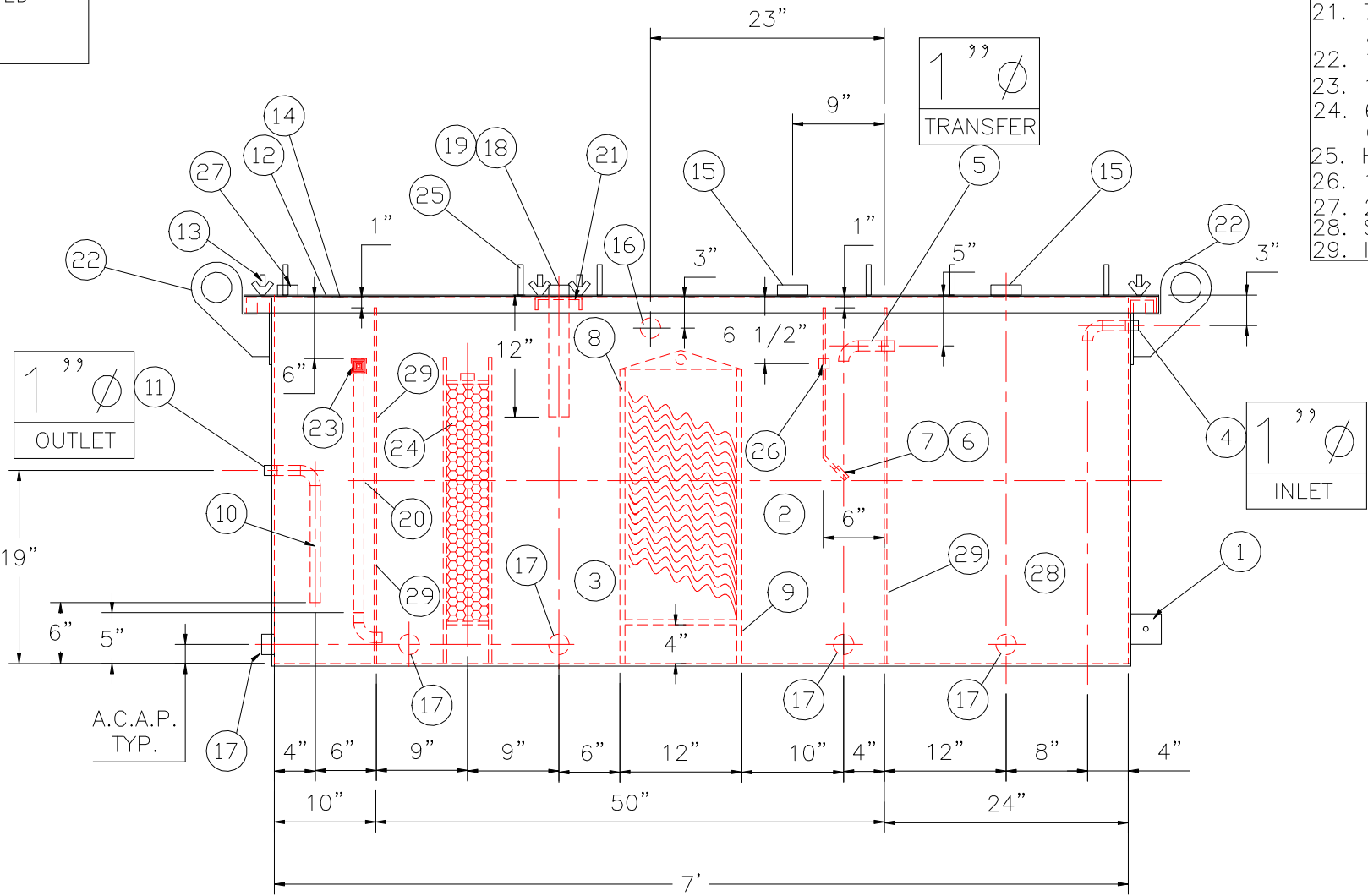


END VIEW

NOTE :  
ALL RIGHTS RESERVED. THIS DRAWING OR ANY PART THEREOF MUST NOT BE REPRODUCED IN ANY FORM WITHOUT THE WRITTEN PERMISSION OF HIGHLAND TANK.  
HIGHLAND TANK SHALL BE RESPONSIBLE ONLY FOR ITEMS INDICATED ON THIS FABRICATION DRAWING UNLESS OTHERWISE NOTED. CUSTOMER IS RESPONSIBLE FOR VERIFYING CORRECTNESS OF SIZE / LOCATION OF FITTINGS , ACCESSORIES & COATINGS SHOWN ON THIS DRAWING



PLAN



ELEVATION

PROVIDED EQUIPMENT

- 1. 3"x3"x1/4" FLAT W/ 9/16"Ø HOLE DRILLED IN CENTER (GROUNDING LUG)
- 2. SEDIMENT CHAMBER
- 3. OIL WATER SEPARATOR CHAMBER
- 4. FNPT THREADED INLET
- 5. PVC INLET ELBOW PIPING
- 6. VELOCITY HEAD DIFFUSION BAFFLE - 10GA
- 7. WEAR PLATE - 1/4"
- 8. REMOVABLE PARALLEL CORRUGATED PLATE COALESCER (CORELLA PVC PLATES) 1" PLATE SPACING
- 9. SLUDGE BAFFLE - 10GA
- 10. PVC OUTLET DOWNCOMER PIPE
- 11. FNPT THREADED OUTLET
- 12. (3) PIECE COVER W/ 5/8" BOLT HOLES - 10 GA
- 13. NUTS & BOLTS W/ LARGE WING NUTS-TYP. (CORROSION RESISTANT)
- 14. GASKET MATERIAL (FOR EACH REMOVABLE COVER)
- 15. 3"Ø FNPT (CLEAN-OUT)
- 16. 2"Ø FNPT (VENT)
- 17. 2"Ø FNPT HALF COUPLING (DRAIN) W/ STEEL PLUG
- 18. 2"Ø FNPT FULL COUPLING W/ 2" Ø INTERNAL PVC PIPE (OIL PUMPOUT)
- 19. 2"Ø FNPT HALF COUPLING (INTERFACE LEVEL SENSOR)
- 20. 1"Ø 90 ° ELBOW W/ 2" HALF COUPLING ON TOP WITH PVC RISER PIPE
- 21. 7 GA BRACING ACROSS TOP OF TANK W/ SENSOR & PUMP-OUT FITTINGS
- 22. 1/2" THICK LIFTING LUG ANGLED TOWARD CENTER
- 23. 1"Ø FERNCO COUPLING
- 24. 6" THICK REMOVABLE PETROSCREEN CARTRIDGE COALESCER
- 25. HANDLES PER H.T. STANDARD
- 26. 1" Ø FNPT COUPLING W/ PLUG
- 27. 2"Ø FNPT HALF COUPLING (SPARE)
- 28. SLUDGE CHAMBER
- 29. INTERNAL BULKHEAD

REVISIONS



**Highland Tank**

U.S. Patent #4,722,800 Canadian Patent # 1,296,263

100 GALLON OIL WATER SEPARATOR  
RECTANGULAR, HTC-G, SINGLE WALL

CUSTOMER:

PROJECT:

QUOTE NO:

CHK'D BY:

UNLESS OTHERWISE SPECIFIED DIMENSIONS ARE IN INCHES  
TOLERANCES ARE + OR - 1"

SCALE:  
3/4"=1'-0"

DATE:  
1-31-14

DWG. BY:  
REM

DWG. NO.:  
00100RECSWHTCG