

GENERAL SPECIFICATIONS

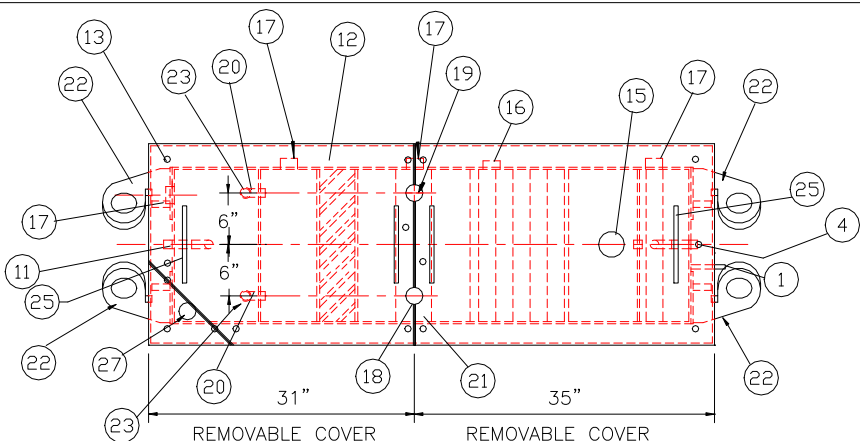
NO. REQ'D: (1)
CAPACITY: 100 GALLONS
TYPE: RECTANGULAR, HTC, ABOVEGROUND, SINGLE WALL
MATERIAL: MILD CARBON STEEL
FLOW RATE: 5 GPM
GAUGE:
SHELL- 10 GA
HEADS- 10 GA
SURFACE PREP:
SSPC NO.10 BLAST ALL INTERIOR SURFACES
SSPC NO.6 BLAST ALL EXTERIOR SURFACES

| COATING: | MATERIAL | THICKNESS |
|-----------|------------------|------------|
| EXTERIOR- | CHEMPRIME 3001 | (3-6 MILS) |
| | CHEMLINE 3300 | (2-3 MILS) |
| | TOP COAT "WHITE" | |
| INTERIOR- | CHEMLINE 4200 PW | (15 MILS) |

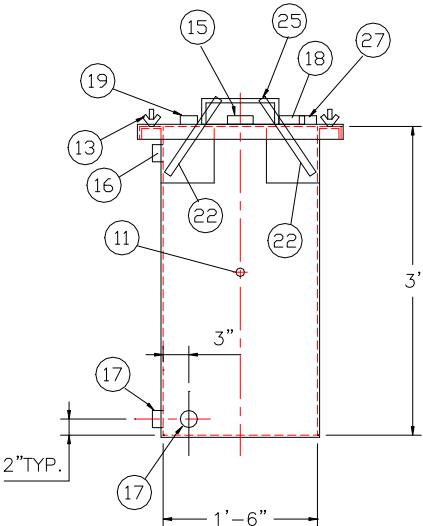
CONSTRUCTION:
BUTT FIT & WELD ALL CORNERS IN & OUT

NOTES

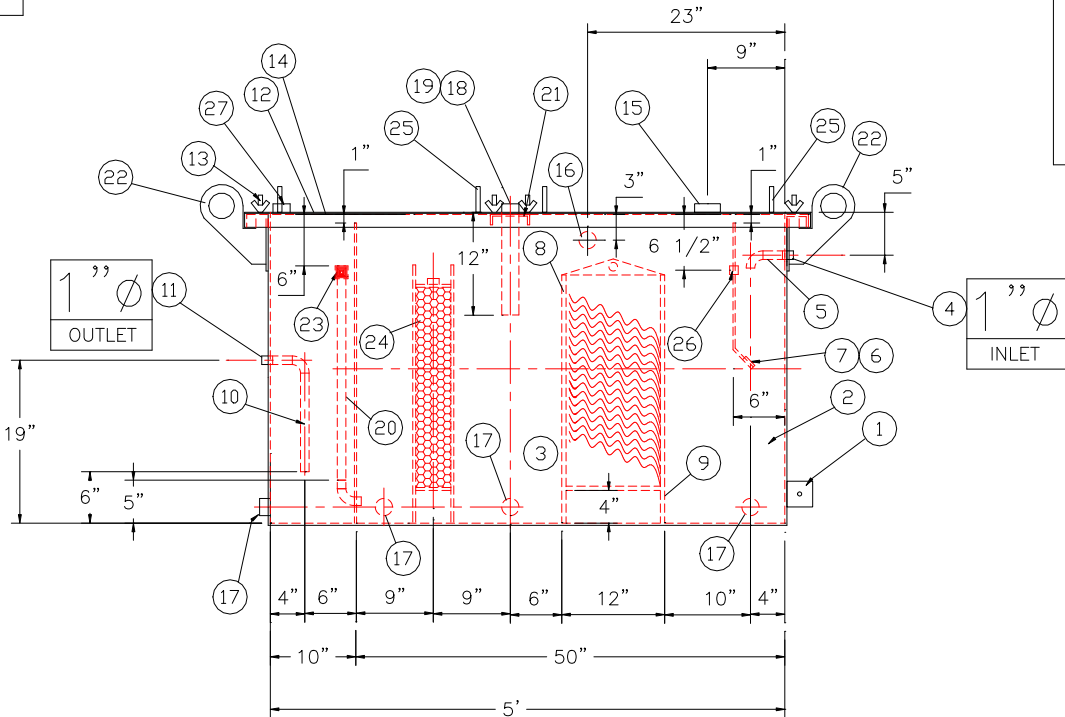
- ALL INTERNAL MATERIAL IS 10 GA
- ALL THREADED DRAIN FITTINGS TO HAVE STEEL THREADED PLUGS AND COATED WITH TANK
- ALL OTHER THREADED FITTINGS TO HAVE PVC THREADED PLUGS
- LIFTING LUGS HAVE REINFORCING PLATES



PLAN



END VIEW




ELEVATION

- REQUIRED EQUIPMENT
- 3"x3"x1/4" FLAT W/ 9/16"Ø HOLE DRILLED IN CENTER (GROUNDING LUG)
 - SEDIMENT CHAMBER
 - OIL WATER SEPARATOR CHAMBER
 - FNPT THREADED INLET
 - PVC INLET ELBOW PIPING
 - VELOCITY HEAD DIFFUSION BAFFLE - 10GA
 - WEAR PLATE - 1/4"
 - REMOVABLE PARALLEL CORRUGATED PLATE COALESCER (CORELLA PVC PLATES) 1" PLATE SPACING
 - SLUDGE BAFFLE - 10GA
 - PVC OUTLET DOWNCOMER PIPE
 - FNPT THREADED OUTLET
 - (2) PIECE COVER W/ 5/8" BOLT HOLES - 10 GA
 - NUTS & BOLTS W/ LARGE WING NUTS-TYP. (CORROSION RESISTANT)
 - GASKET MATERIAL (FOR EACH REMOVABLE COVER)
 - 3"Ø FNPT (CLEAN-OUT)
 - 2"Ø FNPT (VENT)
 - 2"Ø FNPT HALF COUPLING (DRAIN) W/ STEEL PLUG
 - 2"Ø FNPT FULL COUPLING W/ 2" Ø INTERNAL PVC PIPE (OIL PUMPOUT)
 - 2"Ø FNPT HALF COUPLING (INTERFACE LEVEL SENSOR)
 - 1"Ø 90° ELBOW W/ 2" HALF COUPLING ON TOP WITH PVC RISER PIPE
 - 7 GA BRACING ACROSS TOP OF TANK W/ SENSOR & PUMP-OUT FITTINGS
 - 1/2" THICK LIFTING LUG ANGLED TOWARD CENTER
 - 1"Ø FERNCO COUPLING
 - REMOVABLE PETROSCREEN CARTRIDGE COALESCER INSTALLED. 6" THICK
 - HANDLES PER H.T. STANDARD
 - 1" Ø FNPT COUPLING W/ PLUG
 - 2"Ø FNPT HALF COUPLING (SPARE)

NOTE :
ALL RIGHTS RESERVED. THIS DRAWING OR ANY PART THEREOF MUST NOT BE REPRODUCED IN ANY FORM WITHOUT THE WRITTEN PERMISSION OF HIGHLAND TANK.
HIGHLAND TANK SHALL BE RESPONSIBLE ONLY FOR ITEMS INDICATED ON THIS FABRICATION DRAWING UNLESS OTHERWISE NOTED. CUSTOMER IS RESPONSIBLE FOR VERIFYING CORRECTNESS OF SIZE / LOCATION OF FITTINGS , ACCESSORIES & COATINGS SHOWN ON THIS DRAWING

UNLESS OTHERWISE SPECIFIED DIMENSIONS ARE IN INCHES
TOLERANCES ARE + OR - 1"

| REVISIONS | | | |
|--|-------|-----------------|----------------------------|
|  Highland Tank U.S. Patent #4,722,800 Canadian Patent # 1,296,263 | | | |
| 100 GALLON OIL WATER SEPARATOR RECTANGULAR, HTC, SINGLE WALL | | | |
| CUSTOMER: | | | |
| PROJECT: | | | |
| QUOTE NO: | | | CHK'D BY: |
| SCALE: 3/4"=1'-0" | DATE: | DWG. BY: REM | DWG. NO.: 00100RECSWHTC |

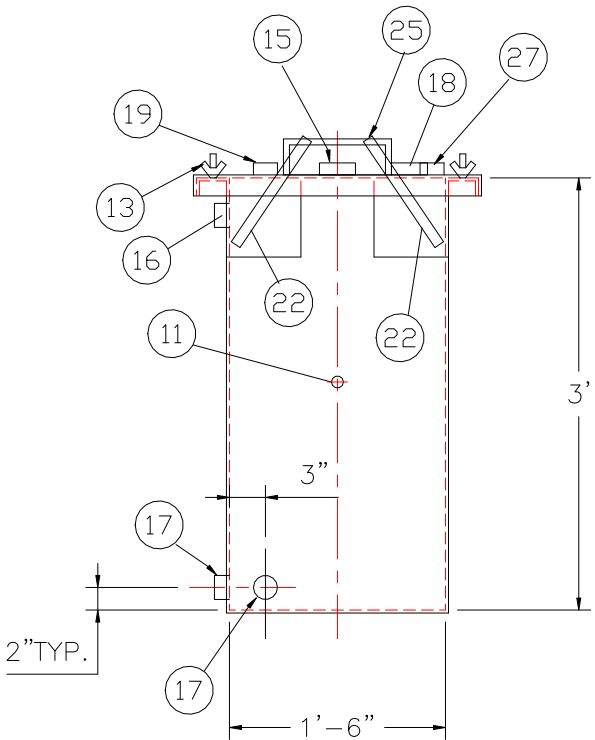
GENERAL SPECIFICATIONS

NO. REQ'D: (1)
CAPACITY: 100 GALLONS
TYPE: RECTANGULAR, HTC, ABOVEGROUND, SINGLE WALL
MATERIAL: MILD CARBON STEEL
FLOW RATE: 5 GPM
GAUGE:
SHELL- 10 GA
HEADS- 10 GA
SURFACE PREP:
SSPC NO.10 BLAST ALL INTERIOR SURFACES
SSPC NO.6 BLAST ALL EXTERIOR SURFACES

COATING: MATERIAL THICKNESS
EXTERIOR- CHEMPRIME 3001 (3-6 MILS)
CHEMLINE 3300 (2-3 MILS)
TOP COAT "WHITE"
INTERIOR- CHEMLINE 4200 PW (15 MILS)
CONSTRUCTION:
BUTT FIT & WELD ALL CORNERS IN & OUT

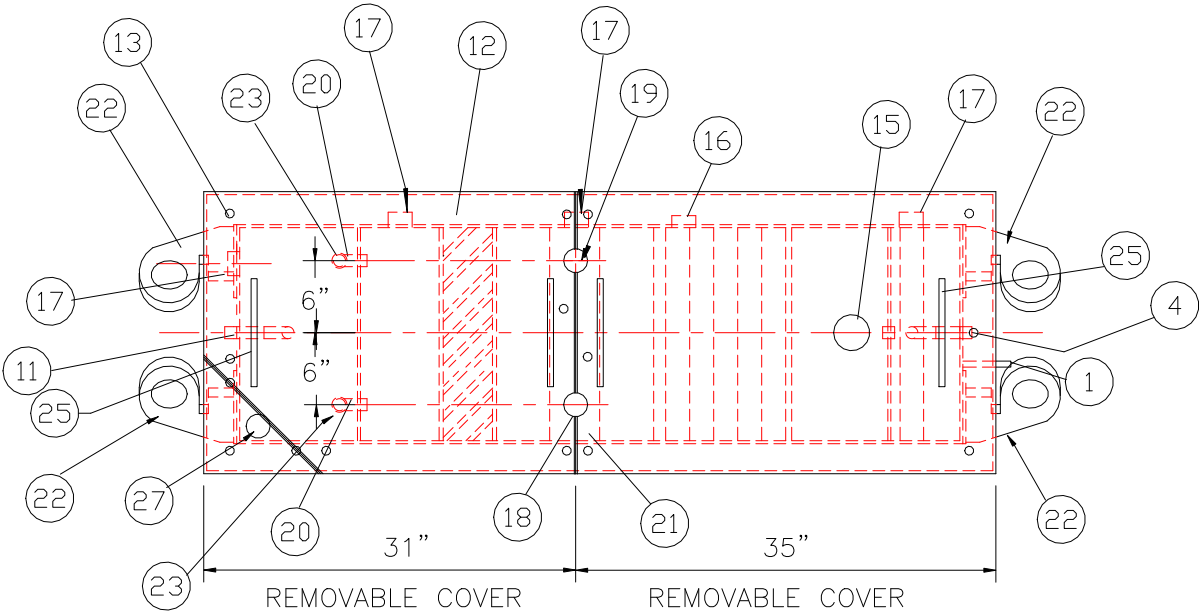
NOTES

- 1. ALL INTERNAL MATERIAL IS 10 GA
- 2. ALL THREADED DRAIN FITTINGS TO HAVE STEEL THREADED PLUGS AND COATED WITH TANK
- 3. ALL OTHER THREADED FITTINGS TO HAVE PVC THREADED PLUGS
- 4. LIFTING LUGS HAVE REINFORCING PLATES

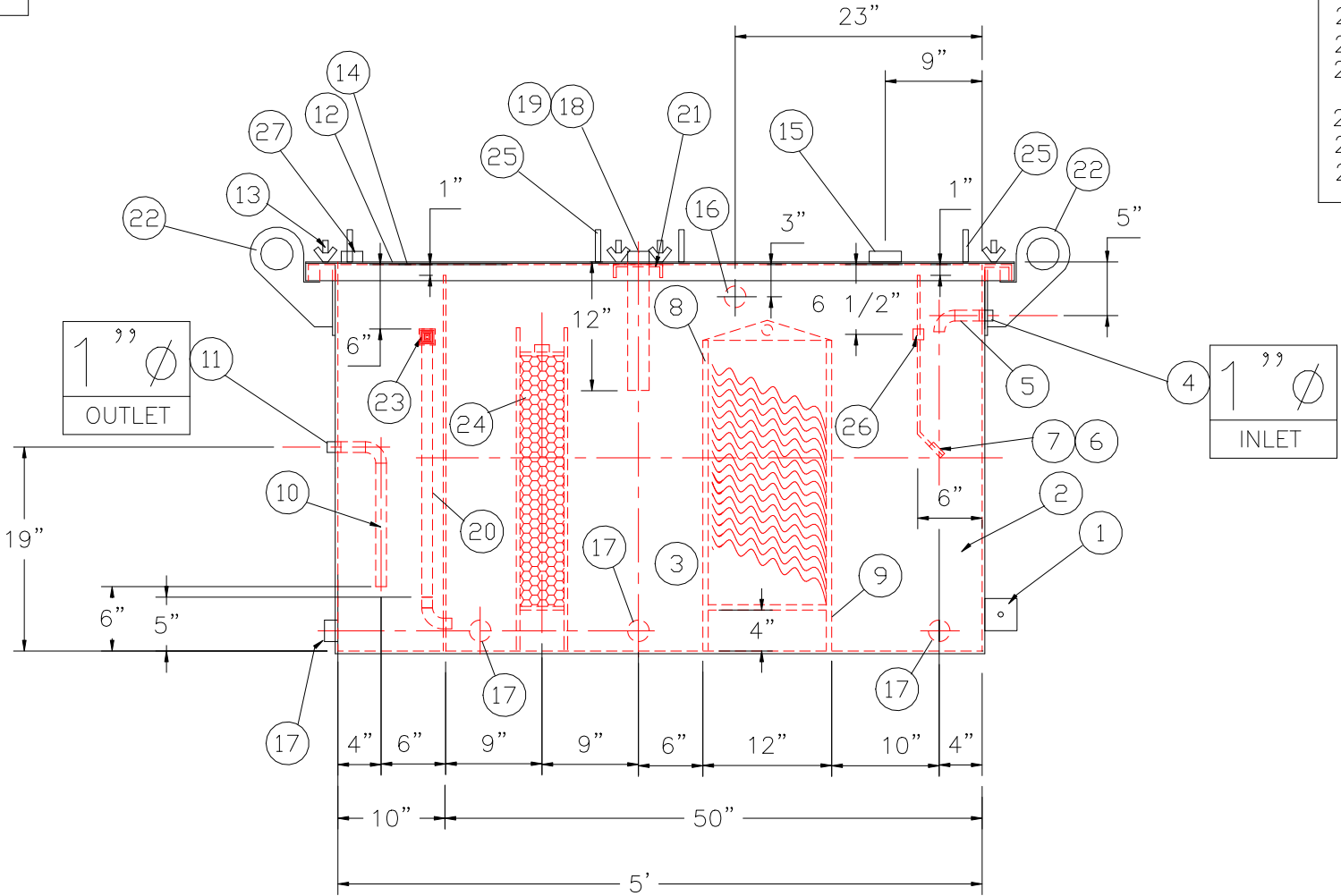


END VIEW

NOTE :
ALL RIGHTS RESERVED. THIS DRAWING OR ANY PART THEREOF MUST NOT BE REPRODUCED IN ANY FORM WITHOUT THE WRITTEN PERMISSION OF HIGHLAND TANK.
HIGHLAND TANK SHALL BE RESPONSIBLE ONLY FOR ITEMS INDICATED ON THIS FABRICATION DRAWING UNLESS OTHERWISE NOTED. CUSTOMER IS RESPONSIBLE FOR VERIFYING CORRECTNESS OF SIZE / LOCATION OF FITTINGS , ACCESSORIES & COATINGS SHOWN ON THIS DRAWING



PLAN



ELEVATION

PROVIDED EQUIPMENT

- 1. 3"x3"x1/4" FLAT W/ 9/16"Ø HOLE DRILLED IN CENTER (GROUNDING LUG)
- 2. SEDIMENT CHAMBER
- 3. OIL WATER SEPARATOR CHAMBER
- 4. FNPT THREADED INLET
- 5. PVC INLET ELBOW PIPING
- 6. VELOCITY HEAD DIFFUSION BAFFLE - 10GA
- 7. WEAR PLATE - 1/4"
- 8. REMOVABLE PARALLEL CORRUGATED PLATE COALESCER (CORELLA PVC PLATES) 1" PLATE SPACING
- 9. SLUDGE BAFFLE - 10GA
- 10. PVC OUTLET DOWNCOMER PIPE
- 11. FNPT THREADED OUTLET
- 12. (2) PIECE COVER W/ 5/8" BOLT HOLES - 10 GA
- 13. NUTS & BOLTS W/ LARGE WING NUTS-TYP. (CORROSION RESISTANT)
- 14. GASKET MATERIAL (FOR EACH REMOVABLE COVER)
- 15. 3"Ø FNPT (CLEAN-OUT)
- 16. 2"Ø FNPT (VENT)
- 17. 2"Ø FNPT HALF COUPLING (DRAIN) W/ STEEL PLUG
- 18. 2"Ø FNPT FULL COUPLING W/ 2" Ø INTERNAL PVC PIPE (OIL PUMPOUT)
- 19. 2"Ø FNPT HALF COUPLING (INTERFACE LEVEL SENSOR)
- 20. 1"Ø 90 ° ELBOW W/ 2" HALF COUPLING ON TOP WITH PVC RISER PIPE
- 21. 7 GA BRACING ACROSS TOP OF TANK W/ SENSOR & PUMP-OUT FITTINGS
- 22. 1/2" THICK LIFTING LUG ANGLED TOWARD CENTER
- 23. 1"Ø FERNCO COUPLING
- 24. REMOVABLE PETROSCREEN CARTRIDGE COALESCER INSTALLED. 6" THICK
- 25. HANDLES PER H.T. STANDARD
- 26. 1" Ø FNPT COUPLING W/ PLUG
- 27. 2"Ø FNPT HALF COUPLING (SPARE)

REVISIONS



Highland Tank

U.S. Patent #4,722,800 Canadian Patent # 1,296,263

100 GALLON OIL WATER SEPARATOR
RECTANGULAR, HTC, SINGLE WALL

CUSTOMER:

PROJECT:

QUOTE NO:

CHK'D BY:

UNLESS OTHERWISE SPECIFIED DIMENSIONS ARE IN INCHES
TOLERANCES ARE + OR - 1"

SCALE:
3/4"=1'-0"

DATE:

DWG. BY:
REM

DWG. NO.:

00100RECSWHTC