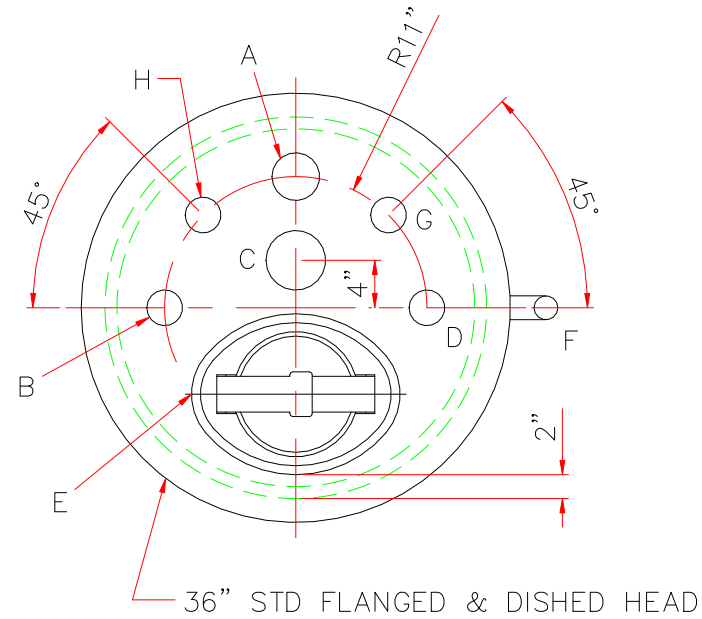


TOUCH UP OF FINISHED PAINT IS  
REQUIRED BY INSTALLATION  
CONTRACTOR. TOUCH UP PAINT SHIPPED  
WITH TANK.



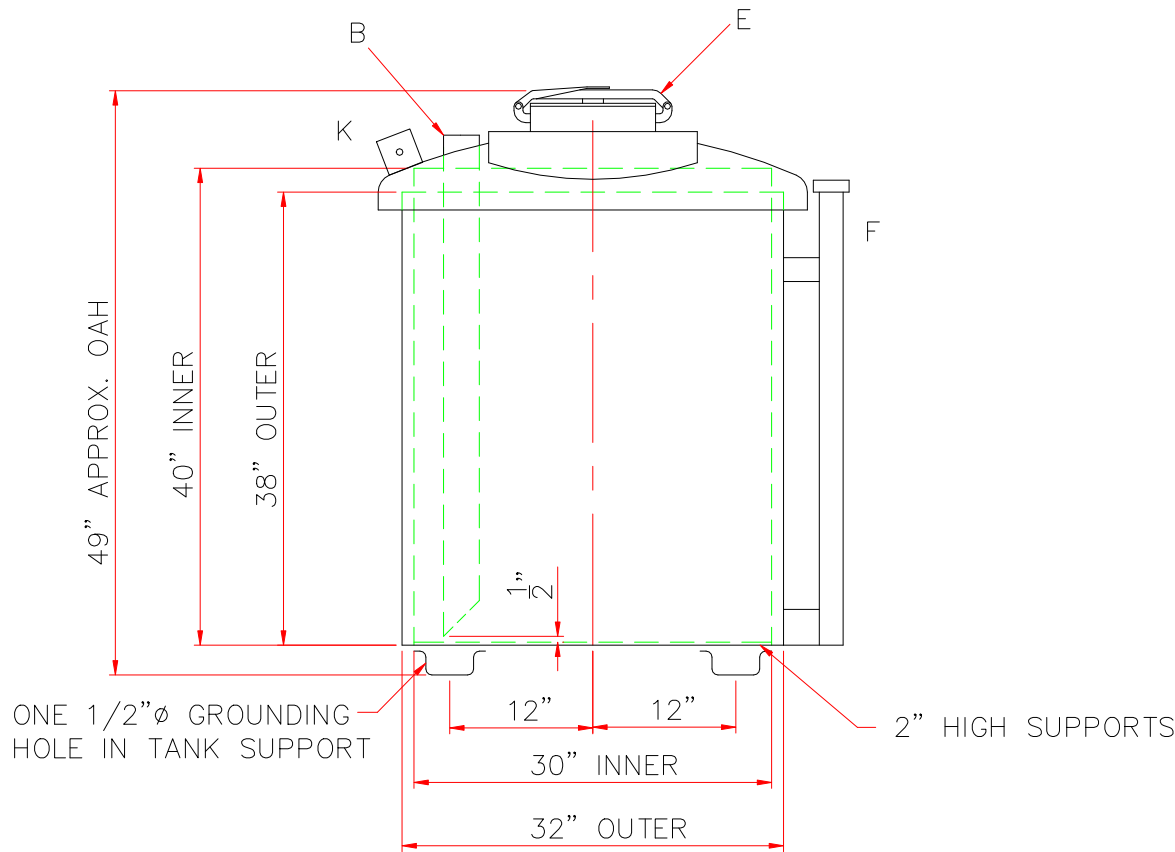
DESIGN DATA	LEGEND	
CAPACITY – 120 GALLON	A	3” HALF COUPLING (EMERGENCY VENT USE)
NO. REQ. – –	B	2” HALF COUPLING WITH QUICK CONNECT & DROP PIPE TO WITHIN 1/2” OF TANK BOTTOM.
OPERATING PRESSURE –ATMOSPHERIC	C	4” HALF COUPLING (SPARE)
SPECIFIC GRAVITY = 1.0	D	2” HALF COUPLING (NORMAL VENT)
TANK MATERIAL – MILD CARBON STEEL	E	12” x 16” MANWAY WITH BETT’S 10”Ø QUICK OPEN FILL IN COVER.
THICKNESS – TOP: 10 GA STD. FLANGED & DISHED	F	2” MONITOR PIPE
THICKNESS – BALANCE OF TANK– 12 GA	G	2” HALF COUPLING (SPARE)
CONSTRUCTION – TANK – LAP WELD OUTSIDE ONLY (INNER TANK IS NOT ATTACHED TO OUTER TUB)	H	2” HALF COUPLING (SPARE)
CONSTRUCTION– TUB – LAP WELD OUTSIDE ONLY	J	–
TANK TEST – TANK ONLY – 5 PSIG	K	3” x 3” PLATE w/ 1/2”Ø HOLE (MIN.) HOLE ON CENTER (GROUNDING LUG – ONE REQ'D ON THE LID), HTM SHOP TO DRILL ONE 1/2”Ø IN THE TANK SUPPORT.
TUB TEST – TUB ONLY – WATERTIGHT		
FINISH – TUB – INSIDE AND OUT – SHOP PRIMER		
FINISH – TANK – INTERIOR – NONE		
FINISH – TANK – EXTERIOR – SAME AS TUB		
LABEL – UL 142 – APPLY LABEL ON TOP OF TANK		
TANK SUPPORT – 10 GA x 4” WIDE x 2” DEEP PRESSBRAKE “U” PATTERN		

SHIP LOOSE: (INSTALLATION BY OTHERS)

(1) 2"Ø x 96" LONG GALVANIZED PIPE (T.B.E.)

(1) 2"Ø MUSHROOM VENT

(1) 3" EMERGENCY VENT



		<h1>Highland Tank</h1>	
<p>UNLESS NOTED, TOLERANCES ARE +/- 1"</p>			
<h2>120 GAL HAZ HOPPER</h2>			
<p>CUSTOMER:</p>			
<p>PROJECT:</p>			
<p>QUOTE NO:</p>		<p>CHK'D BY:</p>	
<p>SCALE: 3/4"=1'-0"</p>	<p>DATE:</p>	<p>DWG. BY:</p>	<p>DWG. NO: 0120HH</p>