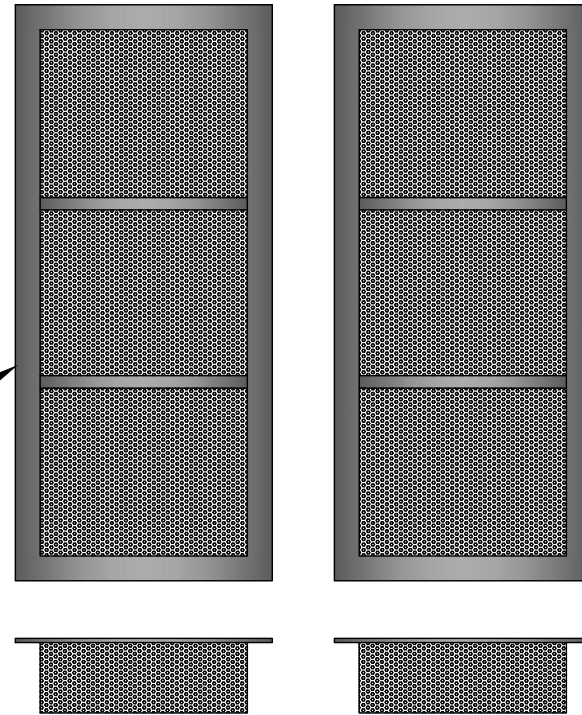
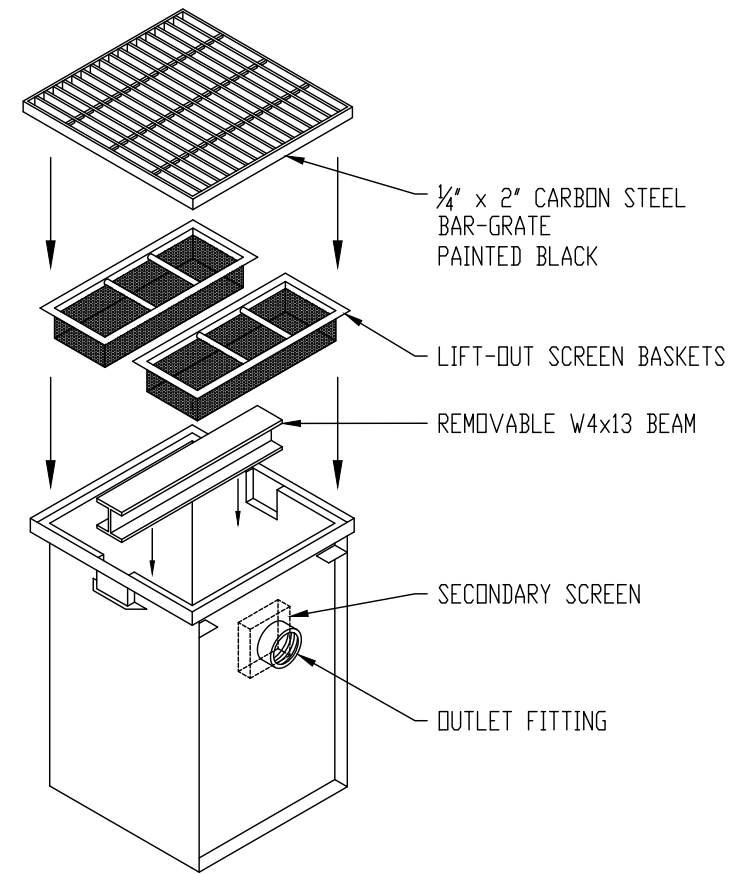


1/4" x 2"
BAR GRATE

(2) REMOVABLE
STAINLESS STEEL
SCREEN BASKETS



REMOVABLE W4x13 BEAM



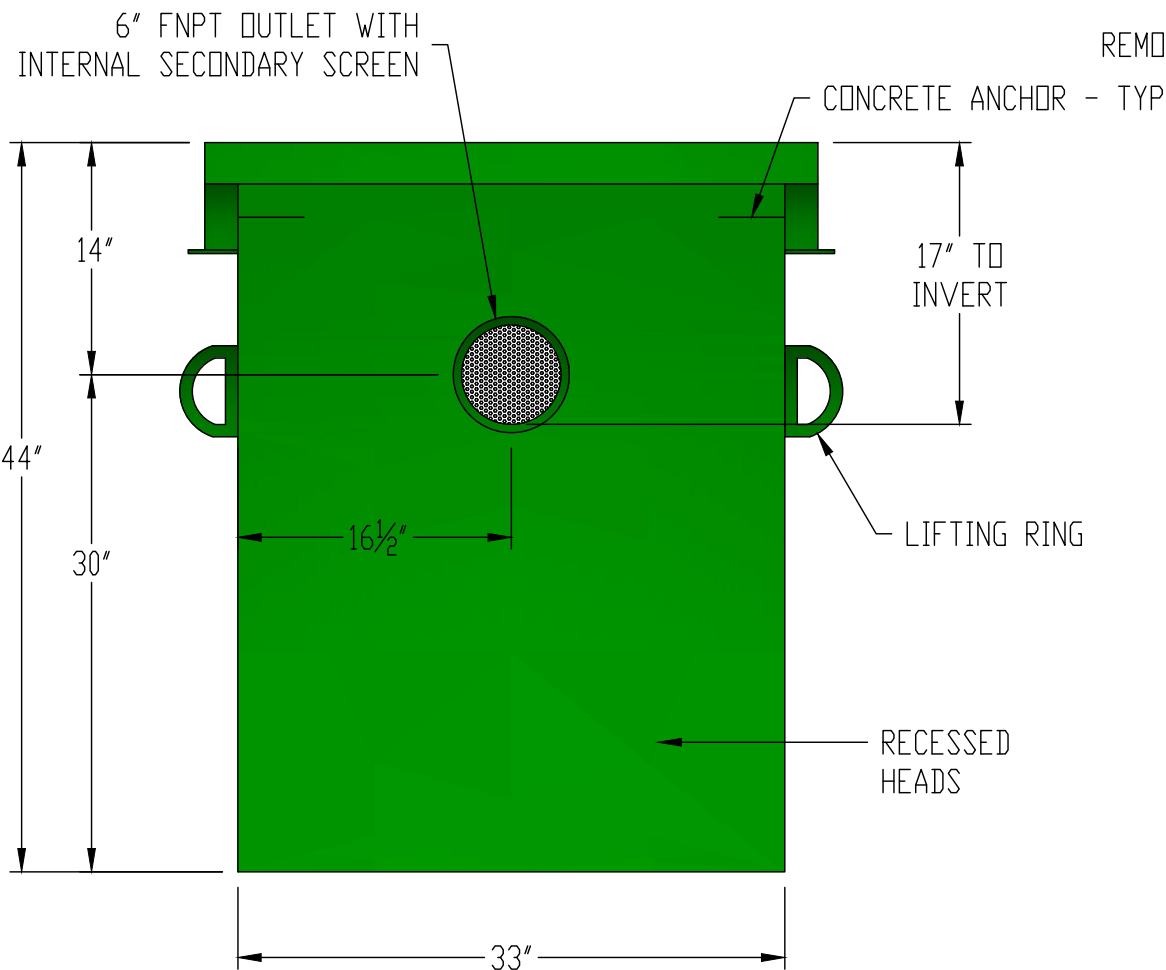
1/4" x 2" CARBON STEEL
BAR-GRATE
PAINTED BLACK

LIFT-OUT SCREEN BASKETS

REMOVABLE W4x13 BEAM

SECONDARY SCREEN

OUTLET FITTING



6" FNPT OUTLET WITH
INTERNAL SECONDARY SCREEN

CONCRETE ANCHOR - TYP

17" TO
INVERT

LIFTING RING

RECESSED
HEADS



GENERAL SPECIFICATIONS

QUANTITY: ONE (1)
MODEL: CB-125
STATIC CAPACITY: 125 GALLONS
TYPE: SINGLE WALL, UNDERGROUND
MATERIAL: 10 GA CARBON STEEL
CONTINUOUS WELD INTERIOR AND EXTERIOR SEAMS
SURFACE PREP: SSPC-SP 10 BLAST ALL SURFACES
INT. & EXT. COATING: CHEMLINE 2240 - 15 MILS DFT

NOTES

STANDARD TANK MATERIAL IS COATED CARBON STEEL - STAINLESS STEEL CONSTRUCTION IS OPTIONAL

DRAWING SHOWS STANDARD TANK HEIGHT DIMENSION FROM OUTLET FITTING TO FINISHED GRADE - CUSTOMER MUST SPECIFY HEIGHT DIMENSION MODIFICATIONS REQUIRED TO MEET PROJECT CONDITIONS

DOUBLE-WALL TANKS AND LEAK DETECTION EQUIPMENT ARE AVAILABLE AS OPTIONS

CUSTOMER APPROVAL

THE CUSTOMER HAS REVIEWED THIS
DRAWING AND VERIFIED THE ACCURACY OF
ALL INFORMATION AND DIMENSIONS.

SIGNED: _____

DATE: _____

NOTE:
ALL RIGHTS RESERVED. THIS DRAWING, OR ANY PART THEREOF, MUST NOT BE REPRODUCED IN ANY FORM WITHOUT WRITTEN PERMISSION FROM HIGHLAND TANK. UNLESS OTHERWISE NOTED, HIGHLAND TANK SHALL BE RESPONSIBLE ONLY FOR ITEMS INDICATED ON THIS FABRICATION DRAWING. THE CUSTOMER IS RESPONSIBLE FOR VERIFYING THE CORRECTNESS OF THE TYPE, SIZE, AND LOCATION OF ALL FITTINGS, ACCESSORIES, AND COATINGS SHOWN ON THIS DRAWING.



125 GALLON CATCH BASIN

CUSTOMER: _____

PROJECT: _____

QUOTE NO.: _____

SCALE: NTS

DATE: 6/15/18

DWG. BY: MGS

DWG. NO: _____

ORDER: _____

CB-125