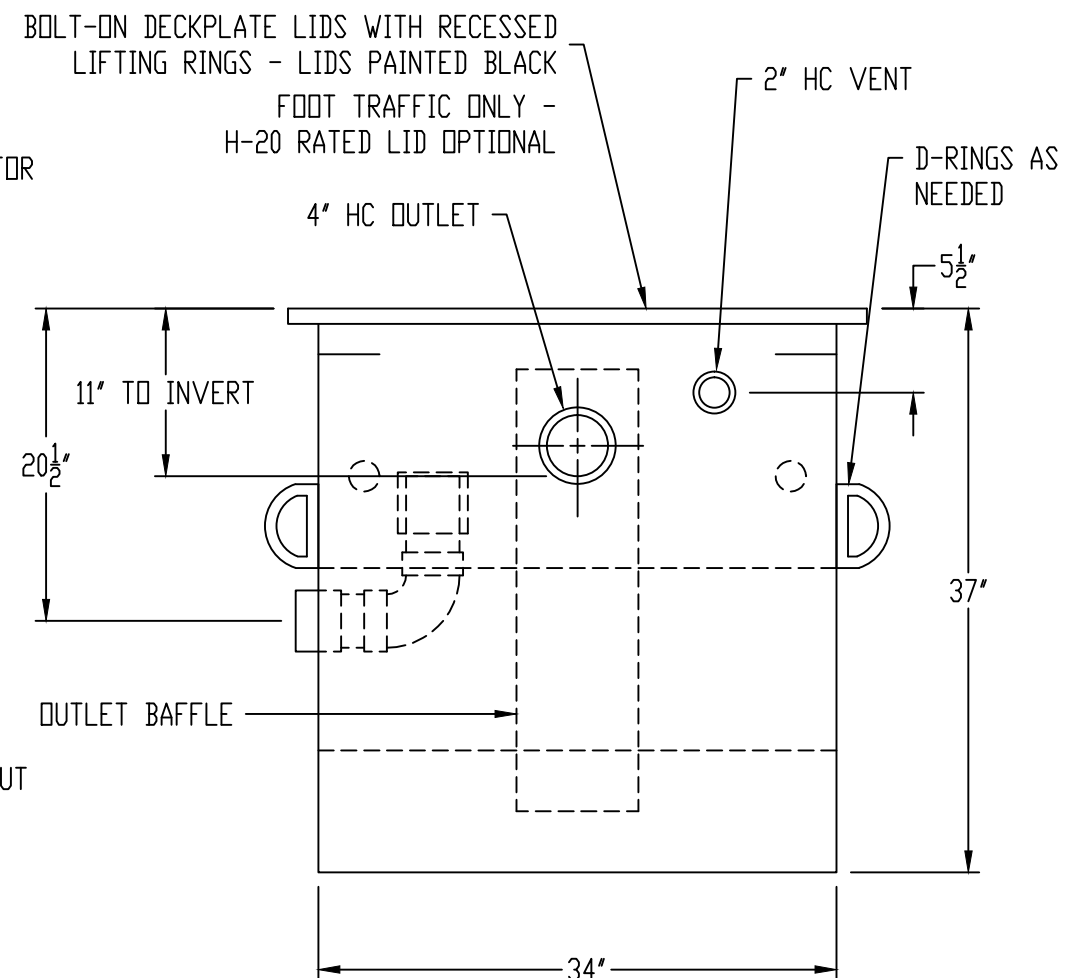
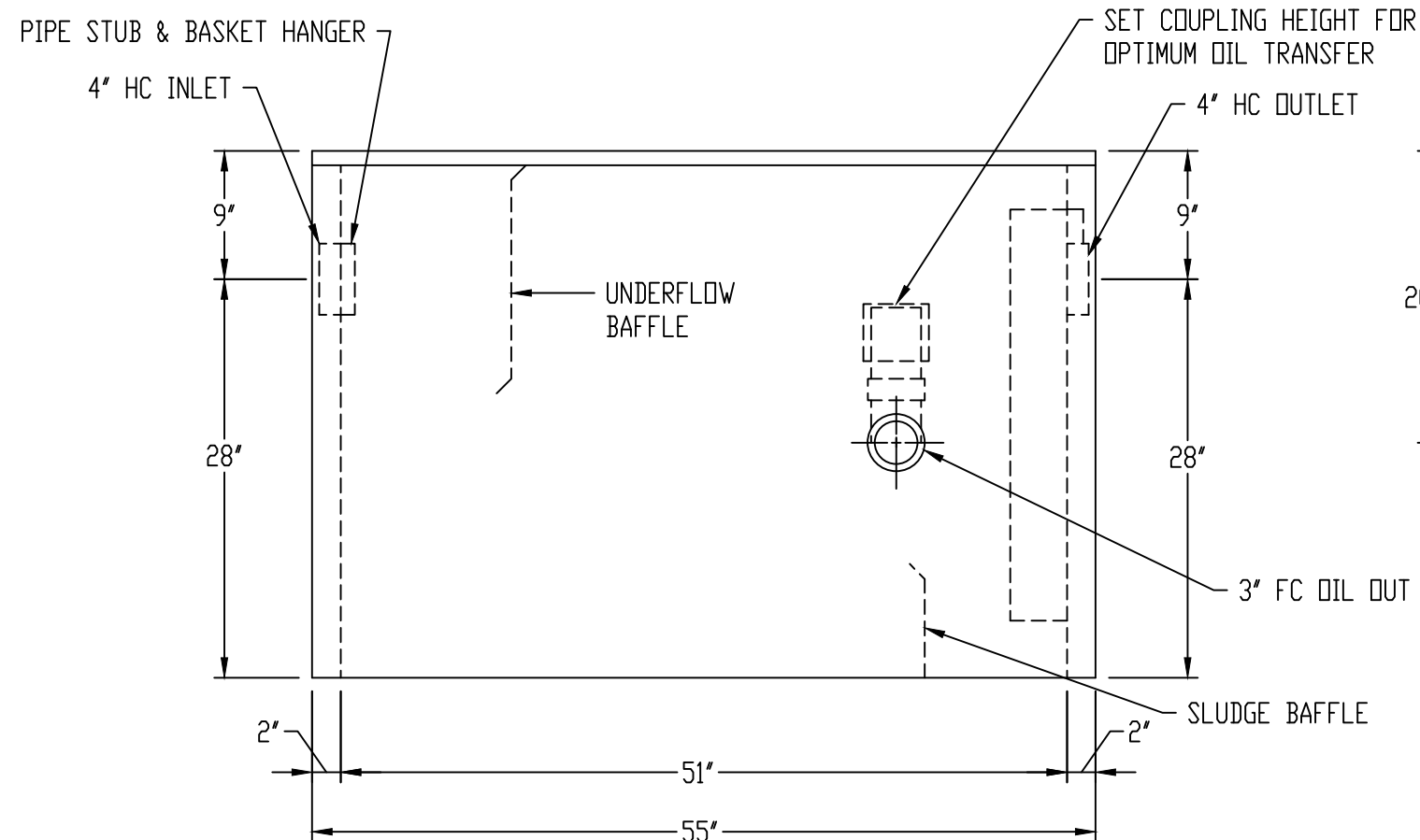


NOTE: INTERCEPTORS WITH INTEGRAL OIL STORAGE CHAMBERS AVAILABLE FROM HIGHLAND TANK



## GENERAL SPECIFICATIONS

QUANTITY: ONE (1)  
 MODEL: MOI-125  
 MAXIMUM FLOW RATE: 125 GPM  
 STATIC WATER CAPACITY: 195 GAL  
 MATERIAL: 10 GA CARBON STEEL  
 SINGLE-WALL CONSTRUCTION  
 SURFACE PREP: SSPC-SP 10 BLAST ALL SURFACES  
 INTERIOR AND EXTERIOR COATING: CHEMTHANE 2240 POLYURETHANE - 15 MILS DFT

## NOTES:

STANDARD TANK MATERIAL IS COATED CARBON STEEL - STAINLESS STEEL CONSTRUCTION IS AVAILABLE.

DRAWING SHOWS STANDARD TANK HEIGHT. CUSTOMER MUST SPECIFY ACTUAL HEIGHT DIMENSION REQUIRED.

ALL PLUMBING CONNECTIONS MUST COMPLY WITH LOCAL CODES AND REGULATIONS.

## CUSTOMER APPROVAL

THE CUSTOMER HAS REVIEWED THIS DRAWING AND VERIFIED THE ACCURACY OF ALL INFORMATION AND DIMENSIONS.

SIGNED: \_\_\_\_\_

DATE: \_\_\_\_\_

NOTE: ALL RIGHTS RESERVED. THIS DRAWING, OR ANY PART THEREOF, MUST NOT BE REPRODUCED IN ANY FORM WITHOUT WRITTEN PERMISSION FROM HIGHLAND TANK. UNLESS OTHERWISE NOTED, HIGHLAND TANK SHALL BE RESPONSIBLE ONLY FOR ITEMS INDICATED ON THIS FABRICATION DRAWING. THE CUSTOMER IS RESPONSIBLE FOR VERIFYING THE CORRECTNESS OF THE TYPE, SIZE, AND LOCATION OF ALL FITTINGS, ACCESSORIES, AND COATINGS SHOWN ON THIS DRAWING.

THIS DRAWING IS SUBJECT TO CHANGE AT THE DISCRETION OF THE MANUFACTURER. CONTACT HIGHLAND TANK FOR THE MOST UP-TO-DATE INFORMATION AND DRAWINGS OF OUR PRODUCTS.



MANUAL OIL INTERCEPTOR  
 MOI-125

CUSTOMER: \_\_\_\_\_

PROJECT: \_\_\_\_\_

QUOTE NO.: \_\_\_\_\_

SCALE: NTS DATE: 2/14/18 DWG. BY: MGS DWG. NO: MOI-125

DIMENSION TOLERANCE: ± 1"