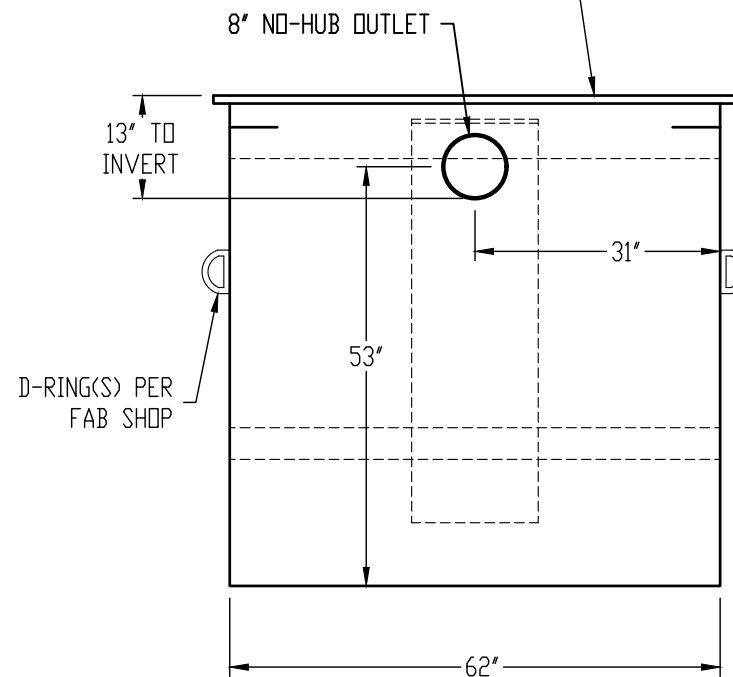
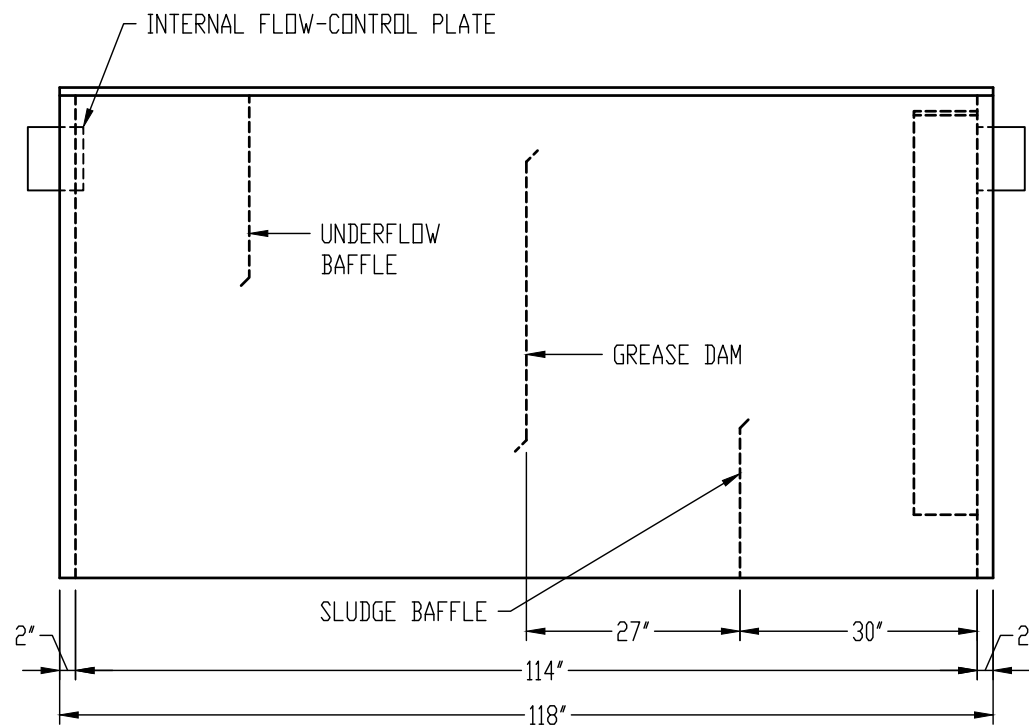
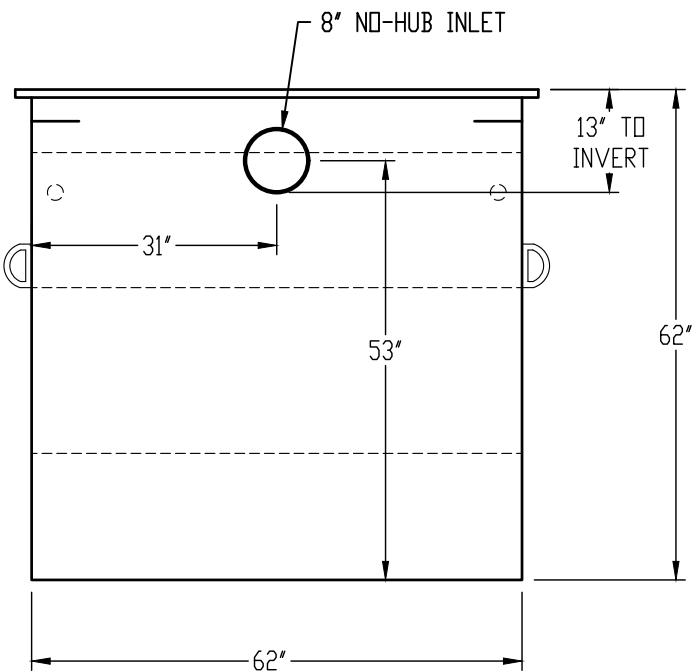


TRAP SEAL WITH
BOLT-ON CLEANOUT

(3) 6" CHANNEL

(4) BOLT-ON DECKPLATE LIDS WITH RECESSED
LIFTING RINGS - LIDS PAINTED BLACK
H-20 RATED LIDS AVAILABLE AS AN OPTION



GENERAL SPECIFICATIONS

QUANTITY: ONE (1)
MODEL: MGI-1500
STATIC CAPACITY: 1,500 GALLONS
GREASE HOLDING CAPACITY: 3,000 LBS
TYPE: SINGLE WALL, UNDERGROUND
MATERIAL: 7 GA CARBON STEEL
CONTINUOUS WELD INTERIOR AND EXTERIOR SEAMS
SURFACE PREP: SSPC-SP 10 BLAST ALL SURFACES
INT. & EXT. COATING: CHEMLINE 2240 - 15 MILS DFT

NOTES

STANDARD TANK MATERIAL IS COATED CARBON STEEL -
STAINLESS STEEL CONSTRUCTION IS OPTIONAL

DRAWING SHOWS STANDARD TANK HEIGHT DIMENSION FROM
INLET/OUTLET FITTINGS TO FINISHED FLOOR - CUSTOMER
MUST SPECIFY HEIGHT DIMENSION MODIFICATIONS REQUIRED TO
MEET PROJECT PLUMBING CONDITIONS

STANDARD TANK LID IS RATED FOR PEDESTRIANS ONLY -
H-20 TRAFFIC RATED LIDS ARE OPTIONAL

CUSTOMER APPROVAL

THE CUSTOMER HAS REVIEWED THIS
DRAWING AND VERIFIED THE ACCURACY OF
ALL INFORMATION AND DIMENSIONS.

SIGNED: _____

DATE: _____

NOTE:
ALL RIGHTS RESERVED. THIS DRAWING, OR ANY PART THEREOF, MUST NOT
BE REPRODUCED IN ANY FORM WITHOUT WRITTEN PERMISSION FROM
HIGHLAND TANK. UNLESS OTHERWISE NOTED, HIGHLAND TANK SHALL BE
RESPONSIBLE ONLY FOR ITEMS INDICATED ON THIS FABRICATION DRAWING.
THE CUSTOMER IS RESPONSIBLE FOR VERIFYING THE CORRECTNESS OF
THE TYPE, SIZE, AND LOCATION OF ALL FITTINGS, ACCESSORIES, AND
COATINGS SHOWN ON THIS DRAWING.



MANUAL GREASE INTERCEPTOR
MGI-1500

CUSTOMER: _____

PROJECT: _____

QUOTE NO.: _____

ORDER: _____

SCALE: DATE: DWG. BY: DWG. NO:

DIMENSION TOLERANCE: ± 1"

NTS

7/7/20

MGS

MGI-1500