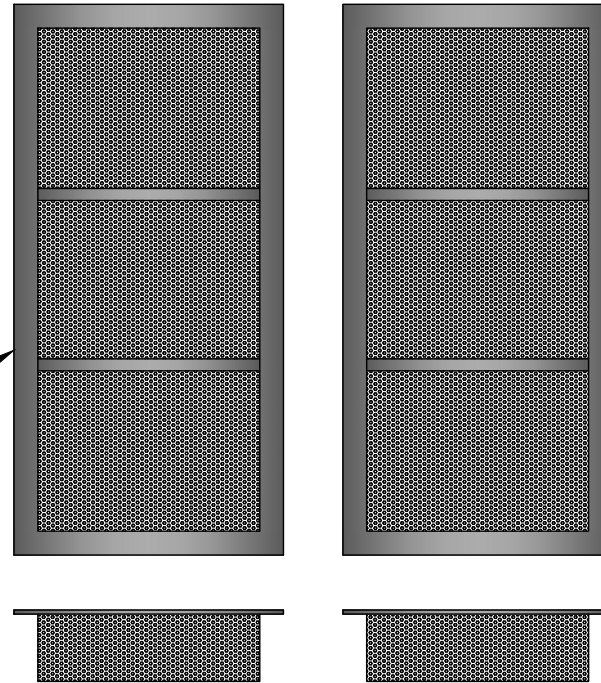
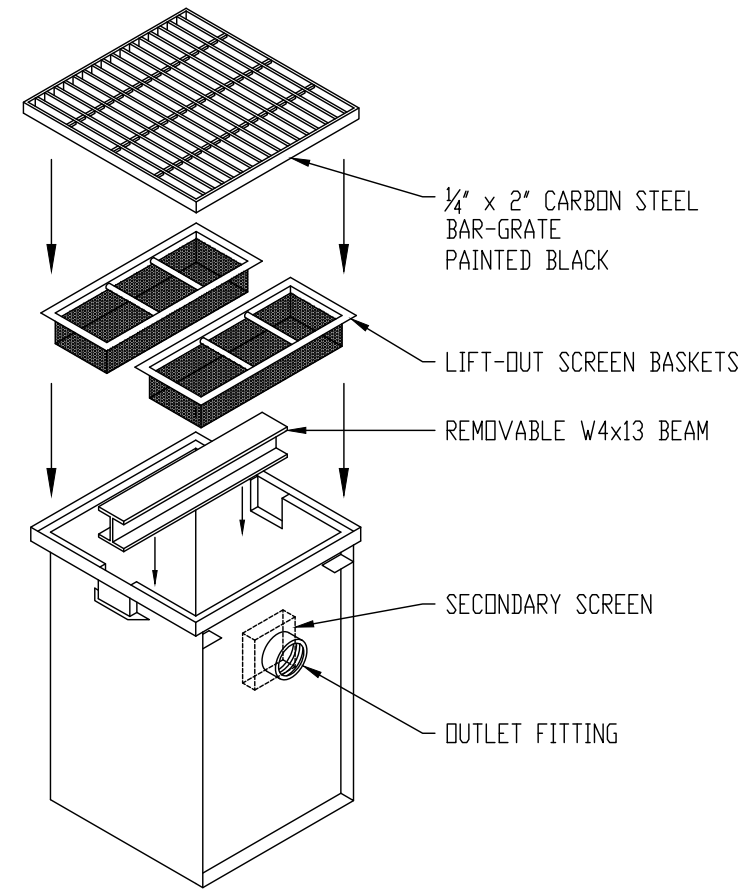


1/4" x 2"
BAR GRATE

(2) REMOVABLE
STAINLESS STEEL
SCREEN BASKETS



REMOVABLE W4x13 BEAM



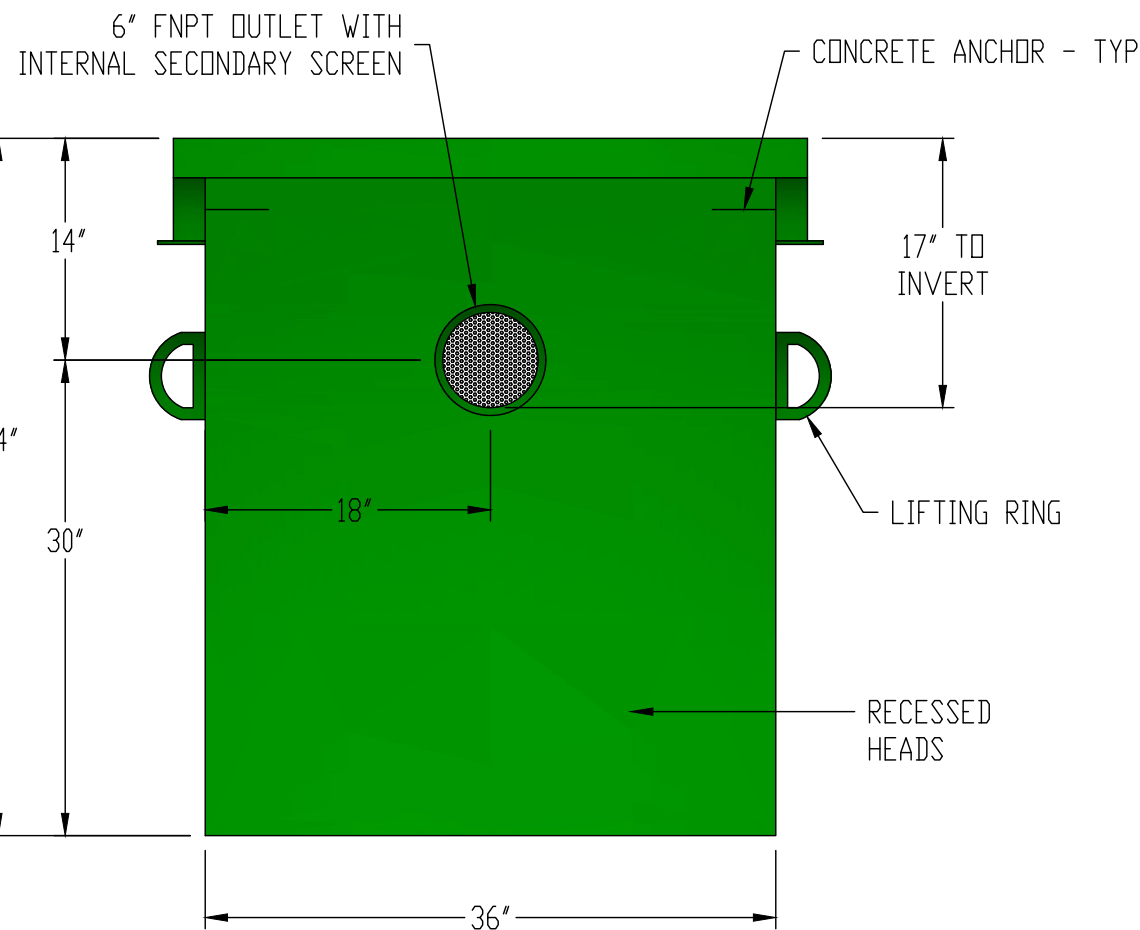
1/4" x 2" CARBON STEEL
BAR-GRATE
PAINTED BLACK

LIFT-OUT SCREEN BASKETS

REMOVABLE W4x13 BEAM

SECONDARY SCREEN

OUTLET FITTING



6" FNPT OUTLET WITH
INTERNAL SECONDARY SCREEN

CONCRETE ANCHOR - TYP

17" TO
INVERT

LIFTING RING

RECESSED
HEADS



GENERAL SPECIFICATIONS

QUANTITY: ONE (1)
MODEL: CB-150
STATIC CAPACITY: 150 GALLONS
TYPE: SINGLE WALL, UNDERGROUND
MATERIAL: 10 GA CARBON STEEL
CONTINUOUS WELD INTERIOR AND EXTERIOR SEAMS
SURFACE PREP: SSPC-SP 10 BLAST ALL SURFACES
INT. & EXT. COATING: CHEMLINE 2240 - 15 MILS DFT

NOTES

STANDARD TANK MATERIAL IS COATED CARBON STEEL -
STAINLESS STEEL CONSTRUCTION IS OPTIONAL

DRAWING SHOWS STANDARD TANK HEIGHT DIMENSION FROM
OUTLET FITTING TO FINISHED GRADE - CUSTOMER MUST
SPECIFY HEIGHT DIMENSION MODIFICATIONS REQUIRED TO MEET
PROJECT CONDITIONS

DOUBLE-WALL TANKS AND LEAK DETECTION EQUIPMENT ARE
AVAILABLE AS OPTIONS

CUSTOMER APPROVAL

THE CUSTOMER HAS REVIEWED THIS
DRAWING AND VERIFIED THE ACCURACY OF
ALL INFORMATION AND DIMENSIONS.

SIGNED: _____

DATE: _____

NOTE:
ALL RIGHTS RESERVED. THIS DRAWING, OR ANY PART THEREOF, MUST NOT
BE REPRODUCED IN ANY FORM WITHOUT WRITTEN PERMISSION FROM
HIGHLAND TANK. UNLESS OTHERWISE NOTED, HIGHLAND TANK SHALL BE
RESPONSIBLE ONLY FOR ITEMS INDICATED ON THIS FABRICATION DRAWING.
THE CUSTOMER IS RESPONSIBLE FOR VERIFYING THE CORRECTNESS OF
THE TYPE, SIZE, AND LOCATION OF ALL FITTINGS, ACCESSORIES, AND
COATINGS SHOWN ON THIS DRAWING.



150 GALLON CATCH BASIN

CUSTOMER: _____

PROJECT: _____

QUOTE NO.: _____

SCALE: _____

DATE: 6/15/18

DWG. BY: MGS

DWG. NO: _____

ORDER: _____

CB-150