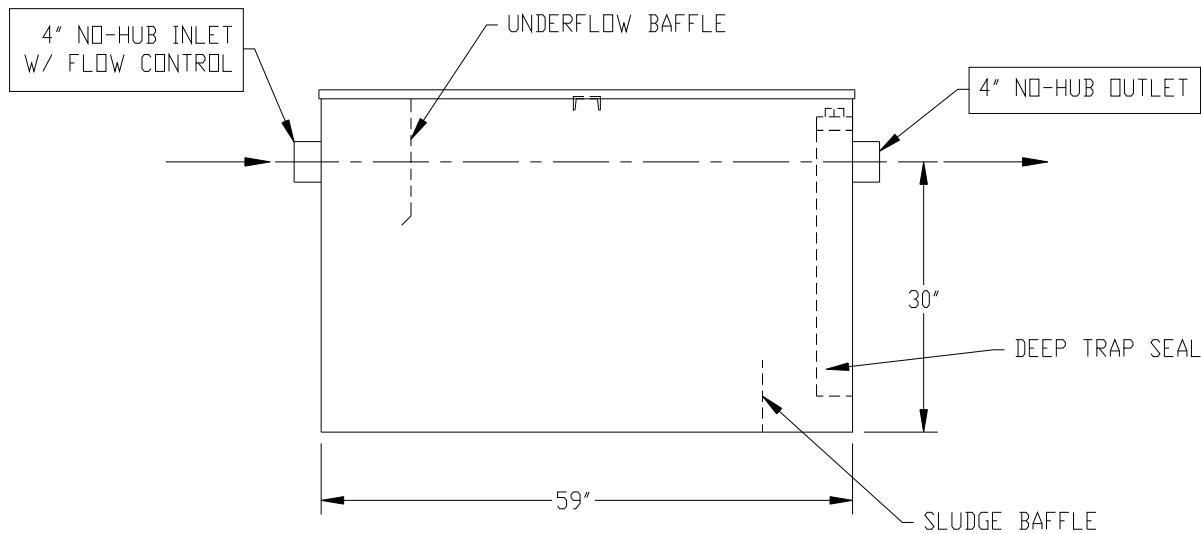
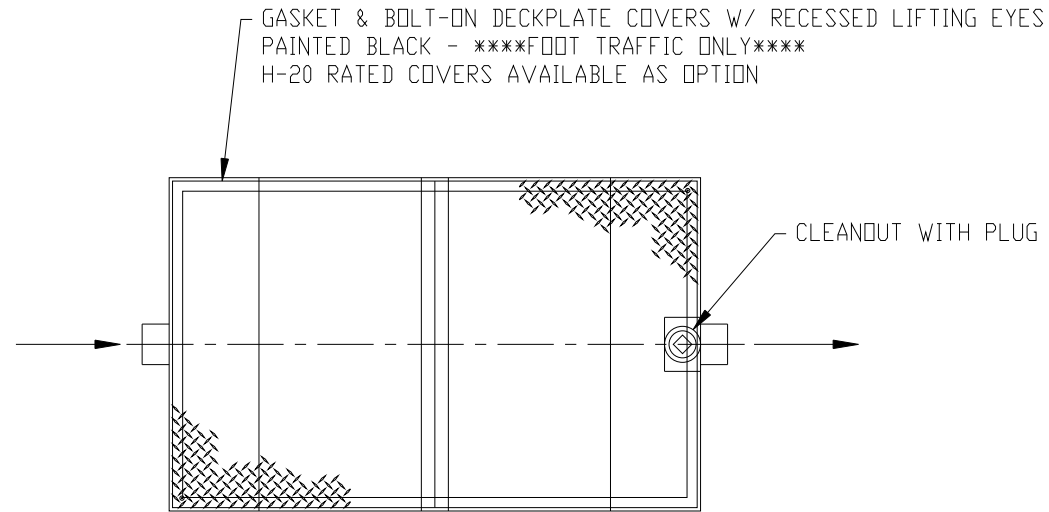
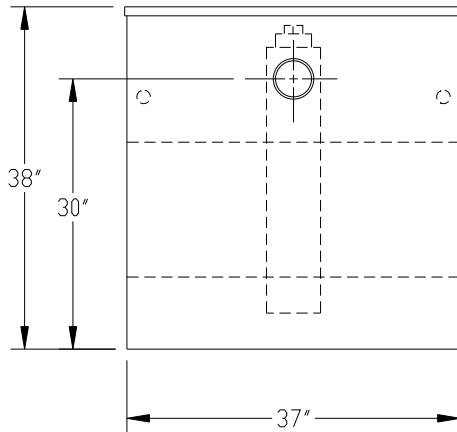


**NOTE:**

STANDARD TANK HEIGHT SHOWN  
CUSTOMER TO VERIFY ACTUAL  
HEIGHT REQUIRED



**NOTE :**  
ALL RIGHTS RESERVED. THIS DRAWING OR ANY PART THEREOF MUST NOT BE REPRODUCED IN ANY FORM WITHOUT THE WRITTEN PERMISSION OF HIGHLAND TANK.  
HIGHLAND TANK SHALL BE RESPONSIBLE ONLY FOR ITEMS INDICATED ON THIS FABRICATION DRAWING UNLESS OTHERWISE NOTED. CUSTOMER IS RESPONSIBLE FOR VERIFYING CORRECTNESS OF SIZE / LOCATION OF FITTINGS , ACCESSORIES & COATINGS SHOWN ON THIS DRAWING

**NOTE: ALL DIMENSIONS IN INCHES UNLESS NOTED OTHERWISE**

**GENERAL SPECIFICATIONS**

NO. REQ'D:

MODEL: MGI-150 CS

MAXIMUM FLOW RATE: 150 GPM

MATERIAL: 12 GA CARBON STEEL

SURFACE PREP:

SSPC-SP 10 BLAST ALL SURFACES

INT. & EXT. COATING: POLYURETHANE

STATIC WATER CAPACITY: 309 GAL

GREASE HOLDING CAPACITY: 300 LBS

APPROX. DRY WEIGHT: 500 LBS

**GENERAL NOTES**

- ALL PLUMBING CONNECTIONS ARE SUBJECT TO LOCAL CODES



**REVISIONS**



**Highland Tank®**

MANUAL GREASE INTERCEPTOR  
MGI-150 CS

CUSTOMER:

PROJECT:

QUOTE NO:

CHK'D BY:

SCALE: NTS

DATE: 12/20/10

DWG. BY: MGS

DWG. NO: MGI-150 CS

DIMENSION TOLERANCE:  $\pm 1"$