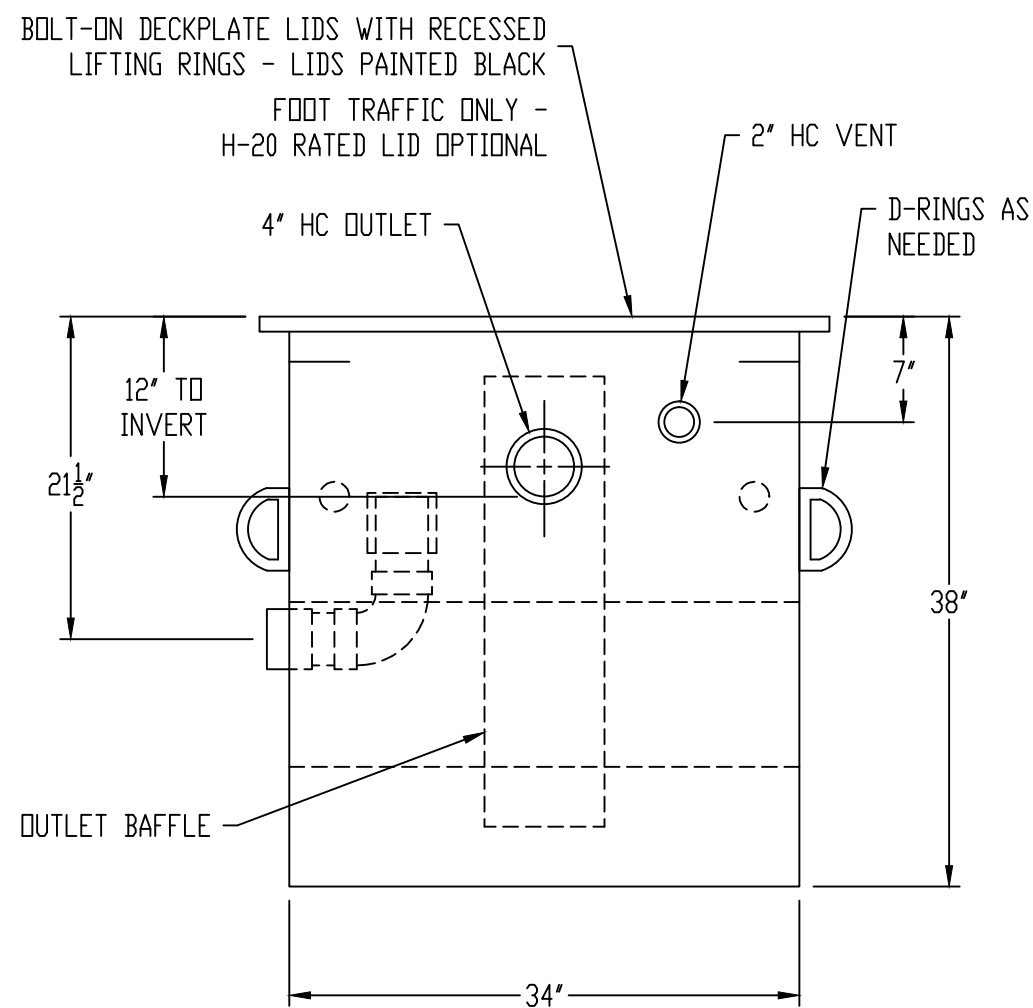
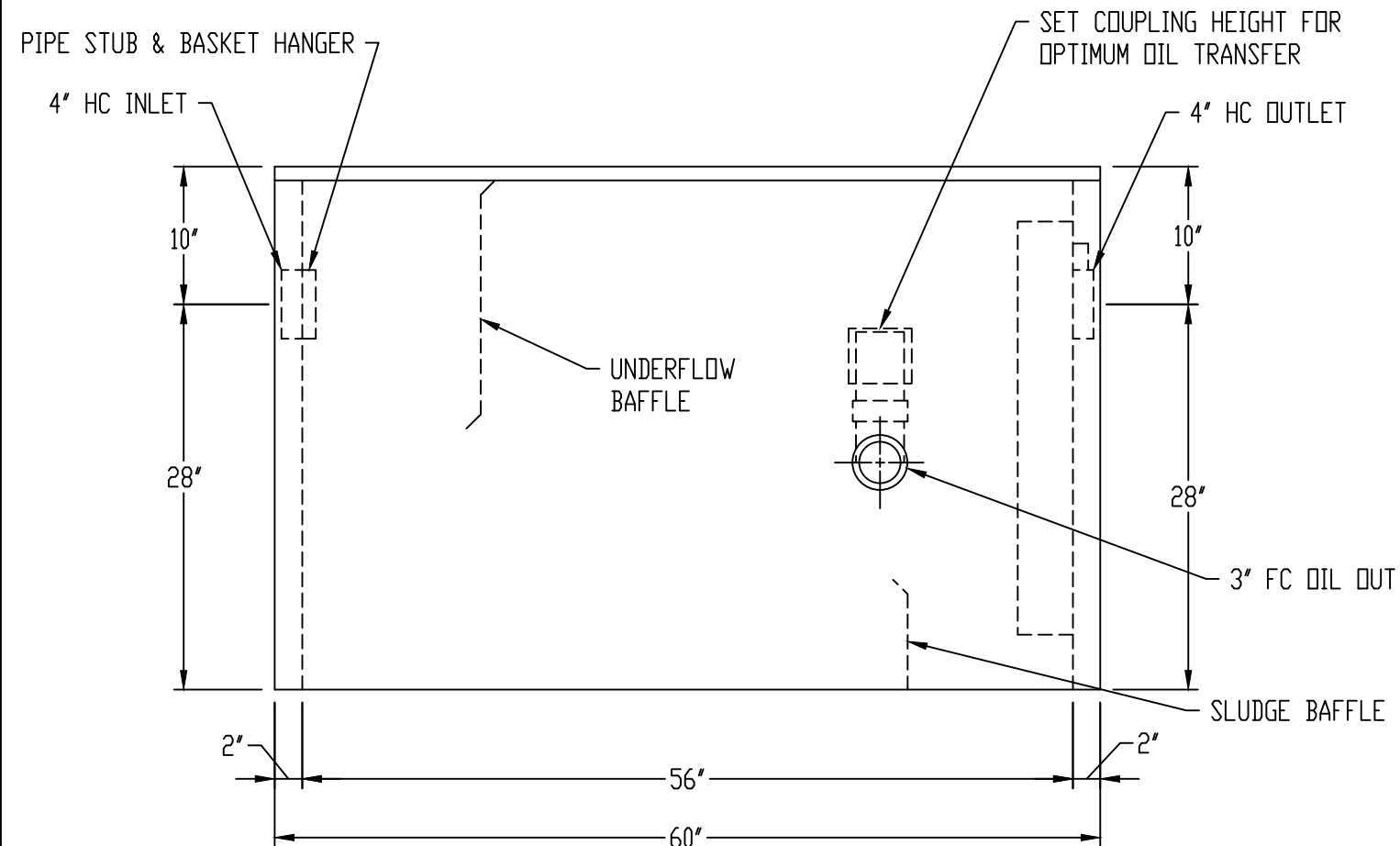


NOTE: INTERCEPTORS WITH INTEGRAL OIL STORAGE CHAMBERS AVAILABLE FROM HIGHLAND TANK



**GENERAL SPECIFICATIONS**  
QUANTITY: ONE (1)  
MODEL: MOI-150  
MAXIMUM FLOW RATE: 150 GPM  
STATIC WATER CAPACITY: 214 GAL  
MATERIAL: 10 GA CARBON STEEL  
SINGLE-WALL CONSTRUCTION  
SURFACE PREP: SSPC-SP 10 BLAST ALL SURFACES  
INTERIOR AND EXTERIOR COATING: CHEMTHANE 2240 POLYURETHANE - 15 MILS DFT

**NOTES:**  
STANDARD TANK MATERIAL IS COATED CARBON STEEL - STAINLESS STEEL CONSTRUCTION IS AVAILABLE.  
DRAWING SHOWS STANDARD TANK HEIGHT. CUSTOMER MUST SPECIFY ACTUAL HEIGHT DIMENSION REQUIRED.  
ALL PLUMBING CONNECTIONS MUST COMPLY WITH LOCAL CODES AND REGULATIONS.

**CUSTOMER APPROVAL**  
THE CUSTOMER HAS REVIEWED THIS DRAWING AND VERIFIED THE ACCURACY OF ALL INFORMATION AND DIMENSIONS.  
SIGNED: \_\_\_\_\_  
DATE: \_\_\_\_\_

**NOTE:**  
ALL RIGHTS RESERVED. THIS DRAWING, OR ANY PART THEREOF, MUST NOT BE REPRODUCED IN ANY FORM WITHOUT WRITTEN PERMISSION FROM HIGHLAND TANK. UNLESS OTHERWISE NOTED, HIGHLAND TANK SHALL BE RESPONSIBLE ONLY FOR ITEMS INDICATED ON THIS FABRICATION DRAWING. THE CUSTOMER IS RESPONSIBLE FOR VERIFYING THE CORRECTNESS OF THE TYPE, SIZE, AND LOCATION OF ALL FITTINGS, ACCESSORIES, AND COATINGS SHOWN ON THIS DRAWING.

THIS DRAWING IS SUBJECT TO CHANGE AT THE DISCRETION OF THE MANUFACTURER. CONTACT HIGHLAND TANK FOR THE MOST UP-TO-DATE INFORMATION AND DRAWINGS OF OUR PRODUCTS.



MANUAL OIL INTERCEPTOR  
MOI-150

CUSTOMER: \_\_\_\_\_  
PROJECT: \_\_\_\_\_  
QUOTE NO.: \_\_\_\_\_  
SCALE: \_\_\_\_\_ DATE: 2/14/18 DWG. BY: MGS DWG. NO: MOI-150

DIMENSION TOLERANCE: ± 1" NTS