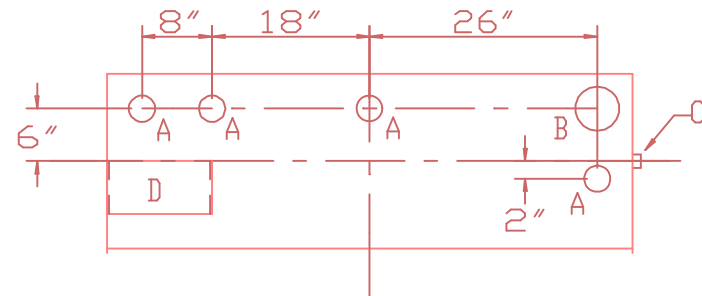
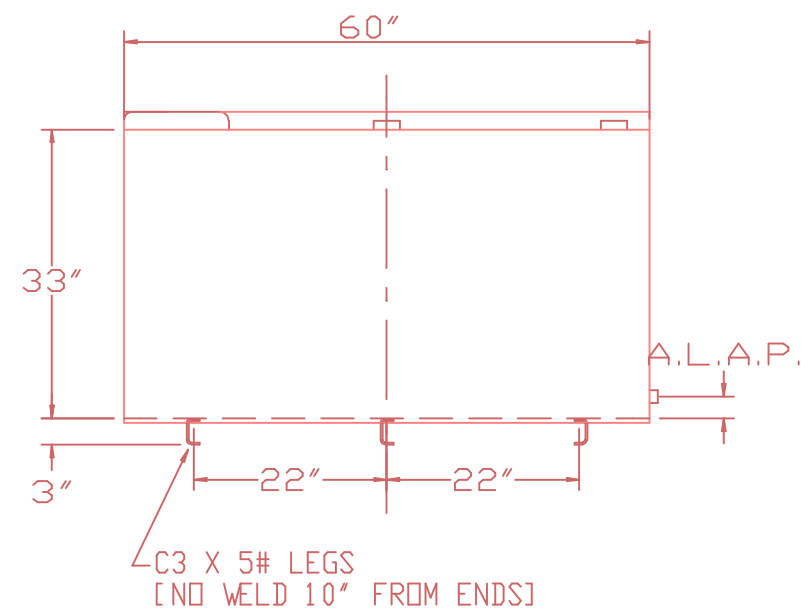


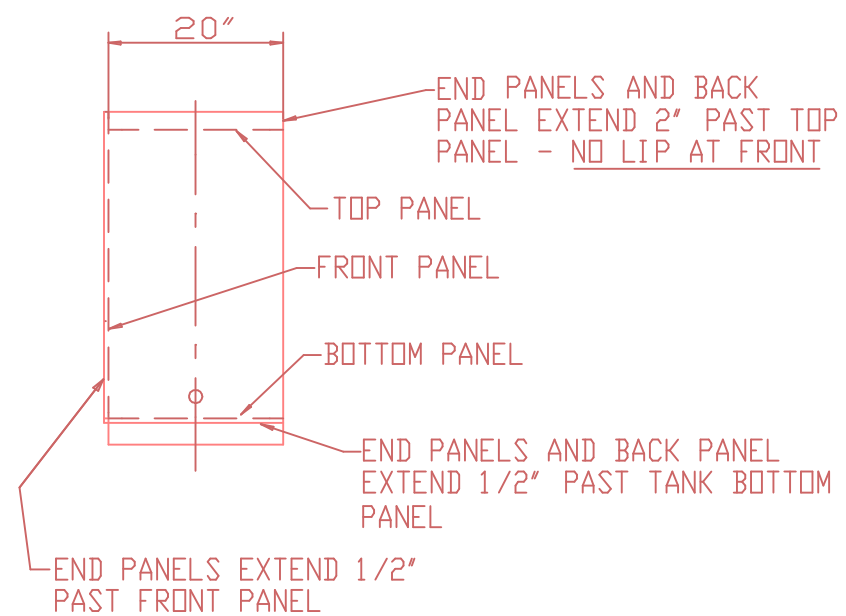
NOTE:
ALL RIGHTS RESERVED, THIS DRAWING OR ANY PART THEREOF MUST
NOT BE REPRODUCED IN ANY FORM WITHOUT THE WRITTEN PERMISSION
OF HIGHLAND TANK
HIGHLAND TANK SHALL BE RESPONSIBLE ONLY FOR ITEMS INDICATED
ON THIS FABRICATION DRAWING UNLESS OTHERWISE NOTED. CUSTOMER
IS RESPONSIBLE FOR VERIFYING CORRECTNESS OF SIZE / LOCATION
OF FITTINGS, ACCESSORIES & COATINGS SHOWN ON THIS DRAWING



TOP VIEW



FRONT VIEW

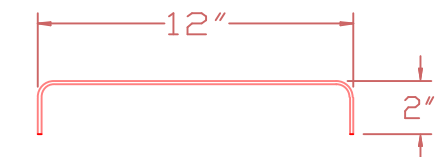
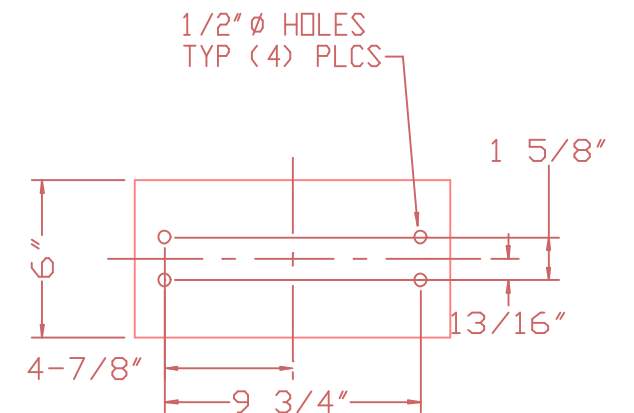


RT END VIEW

NOZZLE SCHEDULE



- A 2" FITTING
B 4" FITTING
C 3/4" FITTING
D MOUNT PER DETAIL

CAPACITY - 170 GAL
MATERIAL - 12 GA MILD CARBON STEEL
CONSTR - LAP WELD OUTSIDE ONLY
PRESS BRAKE / DWG EBT PRESS
TEST - 2 PSIG - (DESIGN PROOF HYDROTEST
15 PSIG)
PAINT - INT - NONE
EXT - SHOP PRIMER
LABEL - UL 142



MATERIAL - 10 GA CARBON STEEL

MOUNT DETAIL

 -		-	
		<h1>Highland Tank</h1>	
170 ECONOMY BENCH TOP TANK			
CUSTOMER: - PROJECT: - QUOTE NO: -			
SCALE 1 1/2" = 1' -0"	DATE 02/10/00	DRAWN BY 001	CHK'D BY DWG NO EBT170