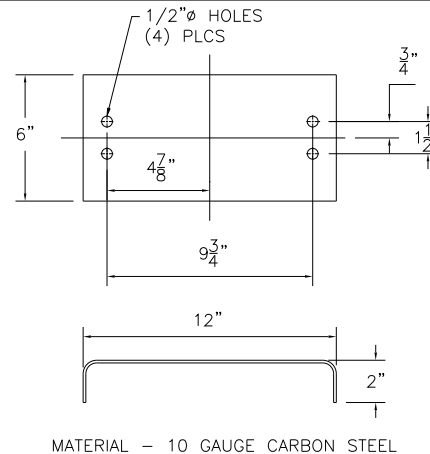
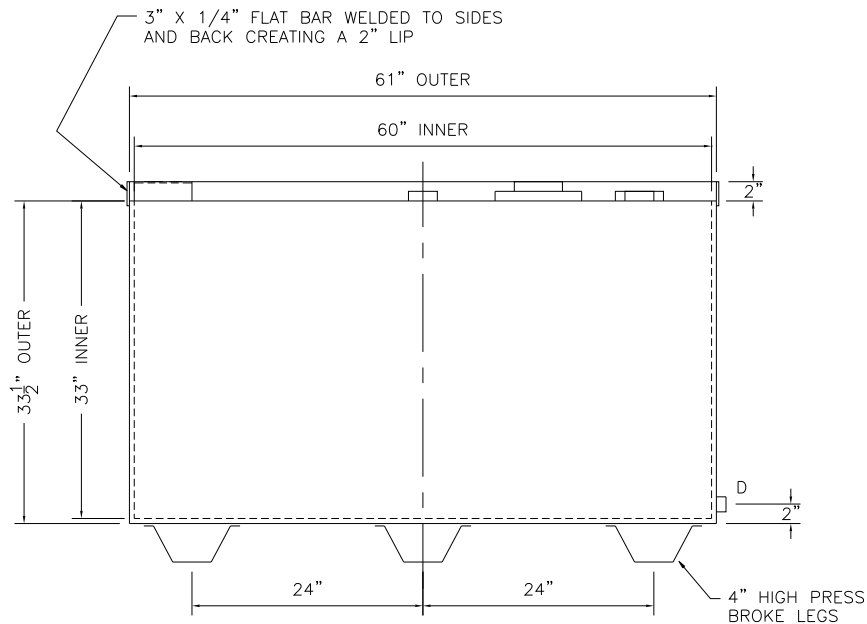
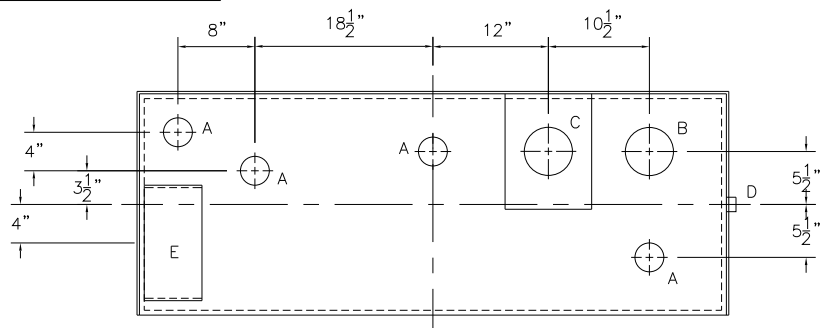
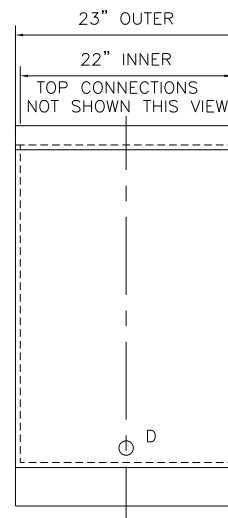


NOTE: ALL RIGHTS RESERVED. THIS DRAWING MUST NOT BE REPRODUCED IN ANY FORM WITHOUT THE WRITTEN PERMISSION OF HIGHLAND TANK®. HIGHLAND TANK® SHALL BE RESPONSIBLE ONLY FOR ITEMS INDICATED ON THIS FABRICATION DRAWING UNLESS OTHERWISE NOTED. CUSTOMER IS RESPONSIBLE FOR VERIFYING CORRECTNESS OF SIZE AND LOCATION OF FITTINGS, ACCESSORIES, AND COATINGS SHOWN ON THIS DRAWING.

TOUCH UP OF FINISHED PAINT IS REQUIRED BY INSTALLATION CONTRACTOR. TOUCH UP PAINT SHIPPED WITH TANK.



MOUNT DETAIL



REFERENCE DRAWINGS


PRESS BRAKE - A19207
LEG DETAIL - WBLEG

DESIGN DATA

CAPACITY - 180 GALLONS
TYPE - DOUBLE WALL - TYPE I
NO. REQ. - -
OPERATING PRESSURE - ATMOSPHERIC
SPECIFIC GRAVITY = 1.0
TANK MATERIAL - MILD CARBON STEEL
THICKNESS - ALL - 12 GAUGE
CONSTRUCTION - LAP WELD OUTSIDE ONLY DOUBLE WALL SIDES AND BOTTOM SINGLE WALL TOP
TANK TEST - INNER - 2 PSIG OUTER - 2 PSIG AND FULL VACUUM
INT. FINISH - NONE
EXT. FINISH - SHOP PRIMER
LABEL - UL 142 MAX TOP LOAD 60#

LEGEND

A	2" FITTING
B	4" FITTING - PRIMARY EMERGENCY VENT USE
C	4" FITTING MOUNTED IN INTERSTICE EXTENSION BOX - MARK WITH LABEL - SECONDARY EMERGENCY VENT USE ONLY
D	1/2" FITTING THROUGH OUTER SHELL ONLY - WITH BUTTON SITE GLASS
E	MOUNT PER DETAIL
F	-

△					
		Highland Tank®			
180 GAL DW BENCHTOP LUBE					
CUSTOMER:					
PROJECT:					
QUOTE NO:				CHK'D BY:	
SCALE: 1" = 12"	DATE:	DWG. BY:	DWG. NO: 00180BTDW		