

GENERAL SPECIFICATIONS

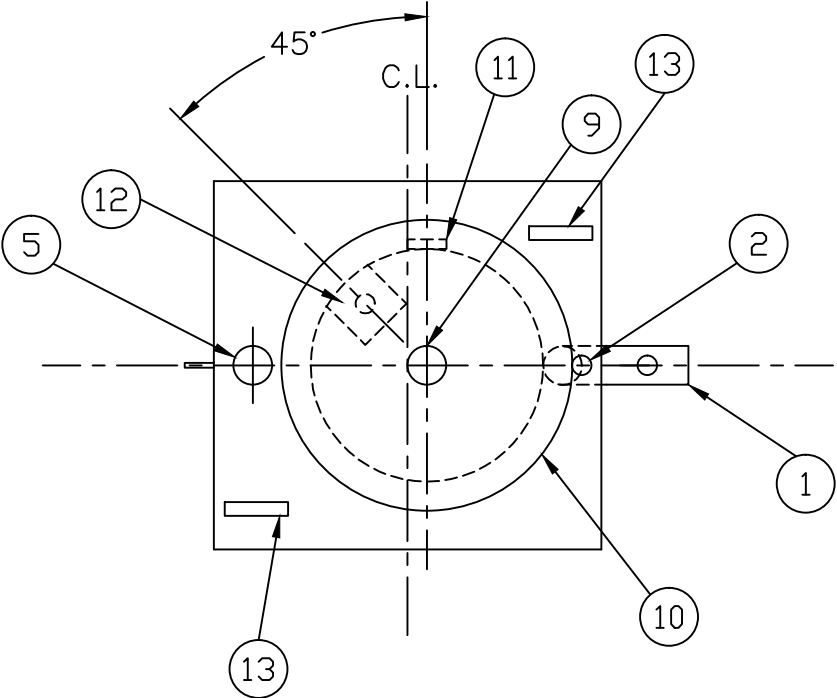
NO. REQ'D: (1)
CAPACITY: 185 GALLON
TYPE: SINGLE WALL, ABOVEGROUND
MATERIAL: MILD CARBON STEEL
GAUGE:
SHELL- 12 GA.
HEADS- 12 GA.

SURFACE PREP:
SSPC-SP 6 BLAST EXTERIOR, SSPC-SP 10 BLAST INTERIOR

COATING: MATERIAL / THICKNESS
EXTERIOR- WHITE URETHANE (3-5 MILS)
INTERIOR- HighDRO®-LINER PLUS POLYURETHANE (15 MILS)

CONSTRUCTION : LAP FIT & WELD ALL EXTERIOR SEAMS
OPERATING PRESSURE : ATMOSPHERIC

ALL VENT PIPING BY INSTALLER
LIFTING LUGS PLACED AS NEEDED PER FAB SHOP

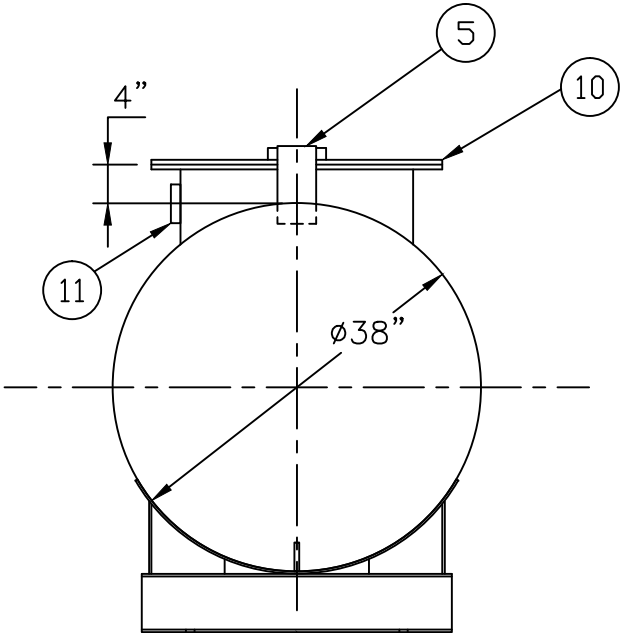


PLAN

PROVIDED EQUIPMENT

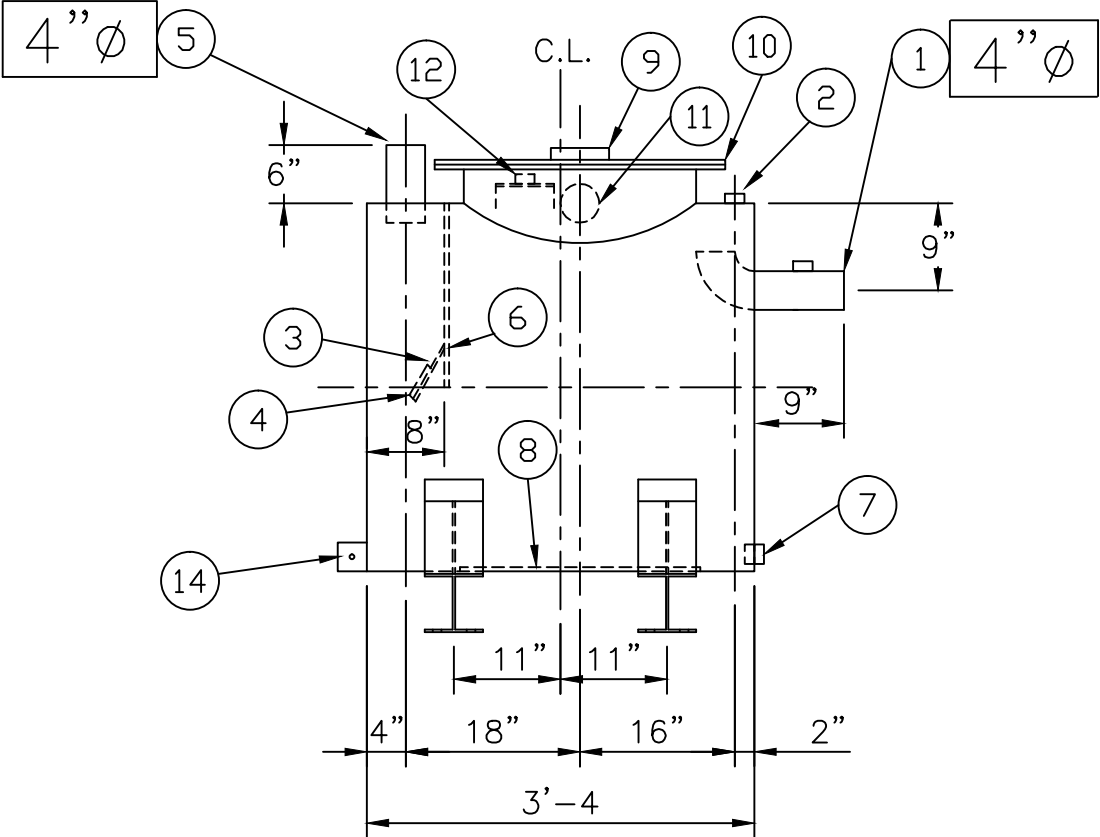
- 1. 4"Ø PIPE STUB W/ 2" NPT FOR VENT (OVERFLOW SKIMMER)
- 2. 2"Ø FTG. FOR VENT
- 3. VELOCITY HEAD DIFFUSION BAFFLE (REMOVABLE)
- 4. WEAR PLATE
- 5. 4"Ø PIPE STUB (INLET)
- 6. UNDERFLOW BAFFLE
- 7. 2"Ø FULL CPLG. FOR PUMP MOUNTING
- 8. STRIKER PLATES
- 9. 4"Ø FTG. FOR GAUGE WITH PLUG
- 10. 24"Ø MANWAY
- 11. 4"Ø FTG. FOR PUMP & LEVEL SENSOR CONDUIT
- 12. 2"Ø FTG. W/ MOUNT FOR LEVEL SENSOR
- 13. LIFTING LUG
- 14. GROUNDING LUG

NOTE :
ALL RIGHTS RESERVED. THIS DRAWING OR ANY PART THEREOF MUST NOT BE REPRODUCED IN ANY FORM WITHOUT THE WRITTEN PERMISSION OF HIGHLAND TANK.
HIGHLAND TANK SHALL BE RESPONSIBLE ONLY FOR ITEMS INDICATED ON THIS FABRICATION DRAWING UNLESS OTHERWISE NOTED. CUSTOMER IS RESPONSIBLE FOR VERIFYING CORRECTNESS OF SIZE / LOCATION OF FITTINGS , ACCESSORIES & COATINGS SHOWN ON THIS DRAWING



(2) 38"Ø x 6" HIGH SADDLES
SHIP LOOSE WITH TANK

END VIEW



ELEVATION

**Highland Tank®**

HighDRO® WATER STORAGE TANKS
185 GALLON RAINWATER COLLECTION TANK

CUSTOMER:

PROJECT:

QUOTE NO: CHK'D BY:

SCALE: DATE: DWG. BY: DWG. NO:

NTS 9/17/10 00185AHSWHDRC38