

TOUCH UP OF FINISHED PAINT IS
REQUIRED BY INSTALLATION
CONTRACTOR. TOUCH UP PAINT SHIPPED
WITH TANK.

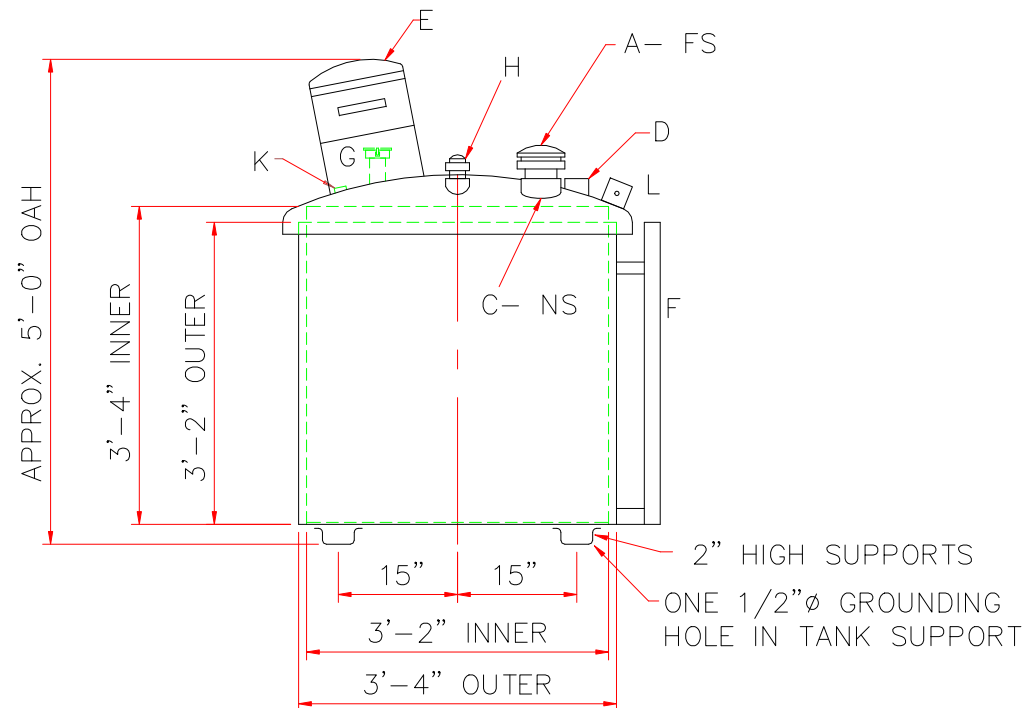


Diagram illustrating the cross-section of a pipe with dimensions and labels:

- 1" X 1/8" ALUMINUM FLAT BAR** (top and bottom labels)
- 3"** (horizontal dimension from center to top bar)
- 4"** (vertical dimension from center to top bar)
- 6"** (vertical dimension from center to bottom bar)
- 4"** (vertical dimension from center to bottom bar)
- G** (center point)
- K** (point on the bottom bar)
- $\phi 12"$** (inner diameter)



SHIP LOOSE: (INSTALLATION BY OTHERS)

- (1) GAUGE
- (1) 2"Ø x 96" LONG GALVANIZED PIPE (T.B.E.)
- (1) 2"Ø MUSHROOM VENT
- (1) 3" EMERGENCY VENT

		<h1>Highland Tank</h1>	
UNLESS NOTED, TOLERANCES ARE $\pm 1"$			
185 GAL PETRO HOPPER			
CUSTOMER:			
PROJECT:			
QUOTE NO:		CHK'D BY:	
SCALE: 1/2"=1'-0"	DATE:	DWG. BY:	DWG. NO: 0185PH