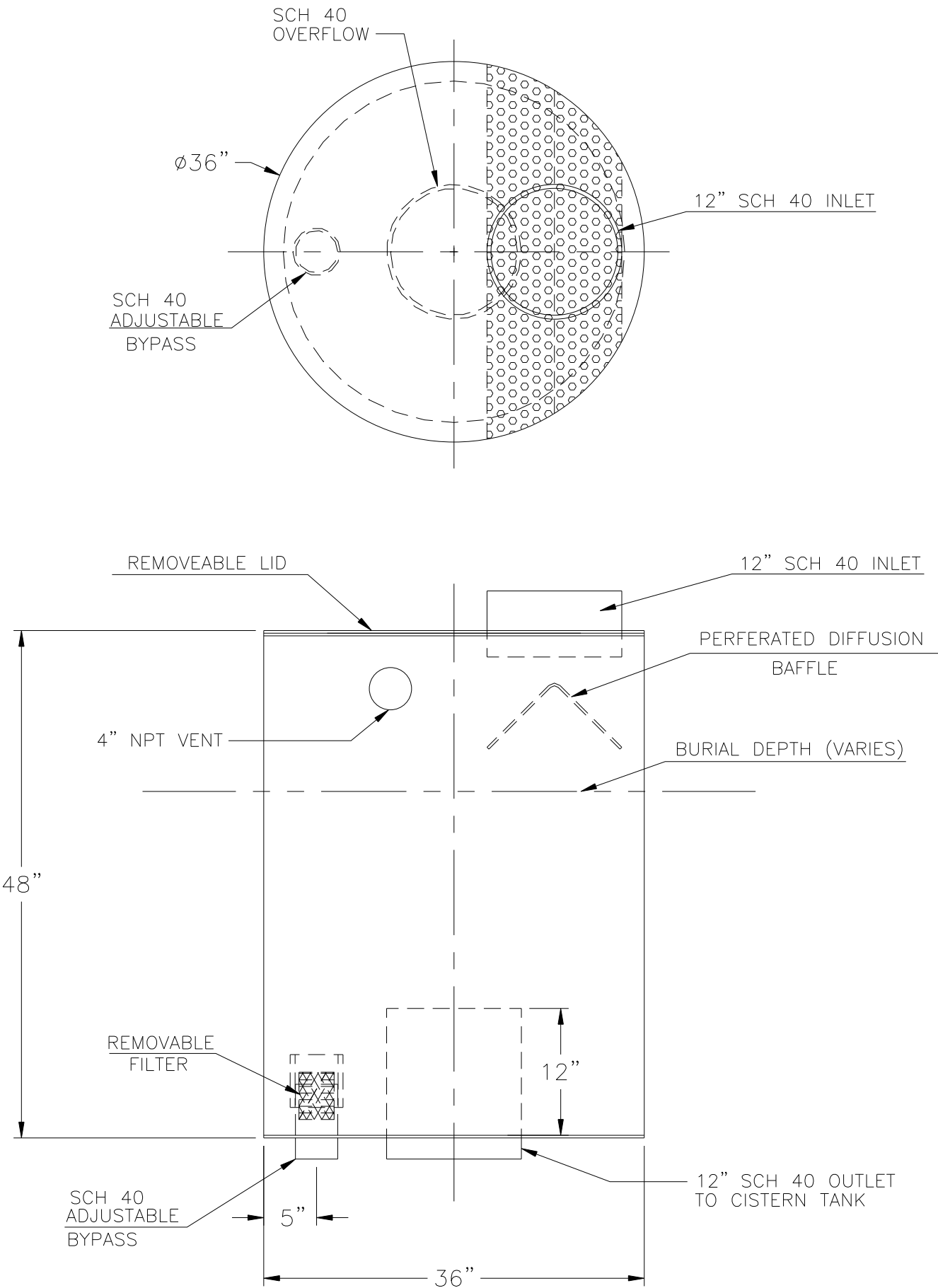


GENERAL SPECIFICATIONS

NO. REQ'D:  
MODEL: FLUSH FILTER  
MATERIAL: MILD CARBON STEEL  
GAUGE OR THICKNESS OF MATERIAL  
1/4" SHELL, 3/8" HEADS  
APPROX. WEIGHT:  
SURFACE PREP:  
SSPC-SP 10 BLAST ALL SURFACES  
COATING: MATERIAL:  
INTERIOR: HighDRO®-LINER PLUS  
POLYURETHANE (15 MILS)  
EXTERIOR: POLYURETHANE



OPTIONS:

- \*GRAVEL MEDIA
- \*OVERFLOW PIPE
- \*ABOVEGROUND OR UNDERGROUND INSTALLATION

NOTE: ALL RIGHTS RESERVED. THIS DRAWING MUST NOT BE REPRODUCED IN ANY FORM WITHOUT THE WRITTEN PERMISSION OF HIGHLAND TANK®. HIGHLAND TANK® SHALL BE RESPONSIBLE ONLY FOR ITEMS INDICATED ON THIS FABRICATION DRAWING UNLESS OTHERWISE NOTED. CUSTOMER IS RESPONSIBLE FOR VERIFYING CORRECTNESS OF SIZE AND LOCATION OF FITTINGS, ACCESSORIES, AND COATINGS SHOWN ON THIS DRAWING.



HIGHLAND TANK

PH.(814)-443-6800 FAX. (814) 444-8662

HighDRO® WATER STORAGE TANKS  
FLUSH FILTER – 12"

CUSTOMER:

PROJECT:

QUOTE NO:

CHK'D BY:

SCALE:	DATE:	DWG. BY:	DWG. NO.:
NTS	3/2/10	CLO	00070HDFF12