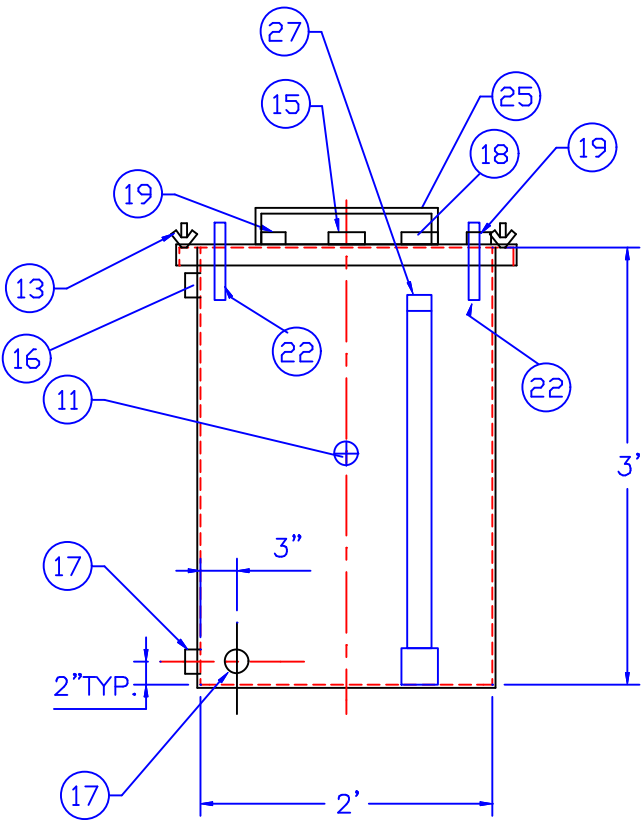


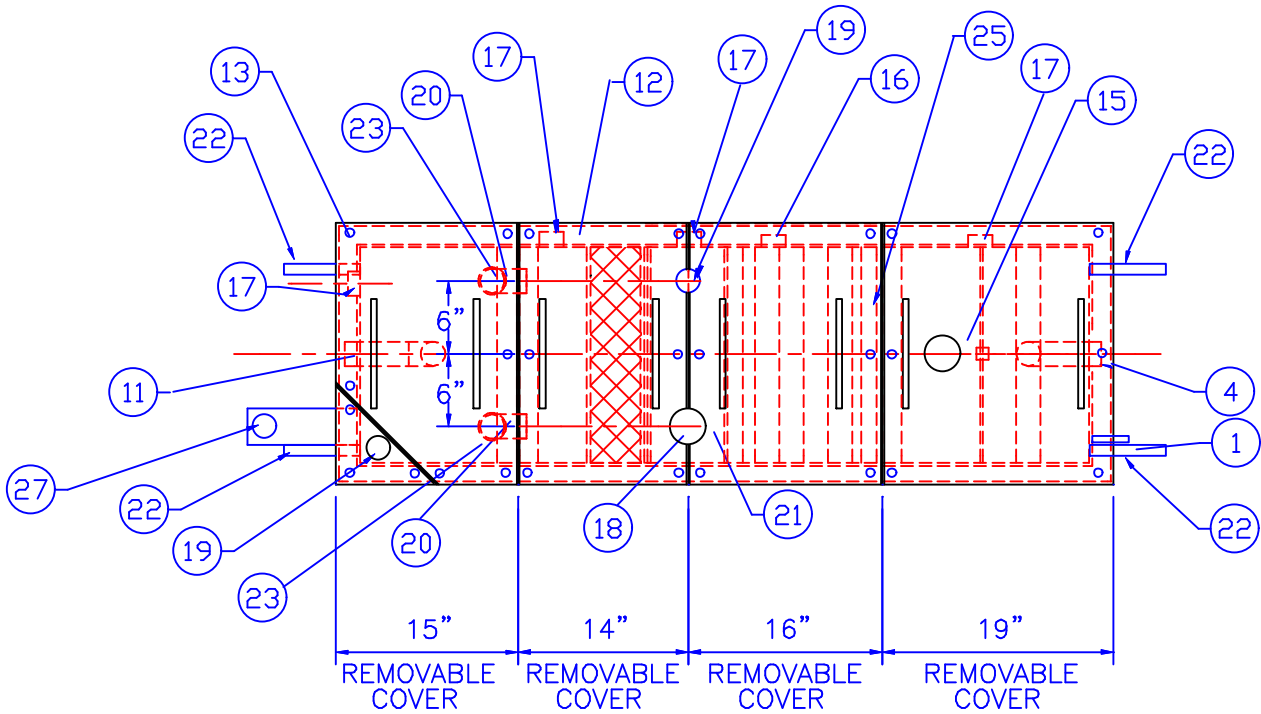
GENERAL SPECIFICATIONS

NO. REQ'D: (1)
CAPACITY: 200 GALLONS
SPILL CAPACITY : 80 GALLONS
TYPE: RECTANGULAR, HTC, ABOVEGROUND, DOUBLEWALL
MATERIAL: MILD CARBON STEEL
APPROX. WEIGHT: 975 LBS.
FLOW RATE: 10 GPM
GAUGE: INNER: OUTER:
SHELL- 7 GA 10 GA
HEADS- 7 GA 10 GA
SURFACE PREP:
SSPC NO.10 BLAST ALL INTERIOR SURFACES
SSPC NO.6 BLAST ALL EXTERIOR SURFACES
COATING: MATERIAL THICKNESS
EXTERIOR- FINISH PAINT WHITE (3 MILS)
INTERIOR- POLYURETHANE (15 MILS)
CONSTRUCTION:
BUTT FIT & WELD ALL CORNERS IN & OUT

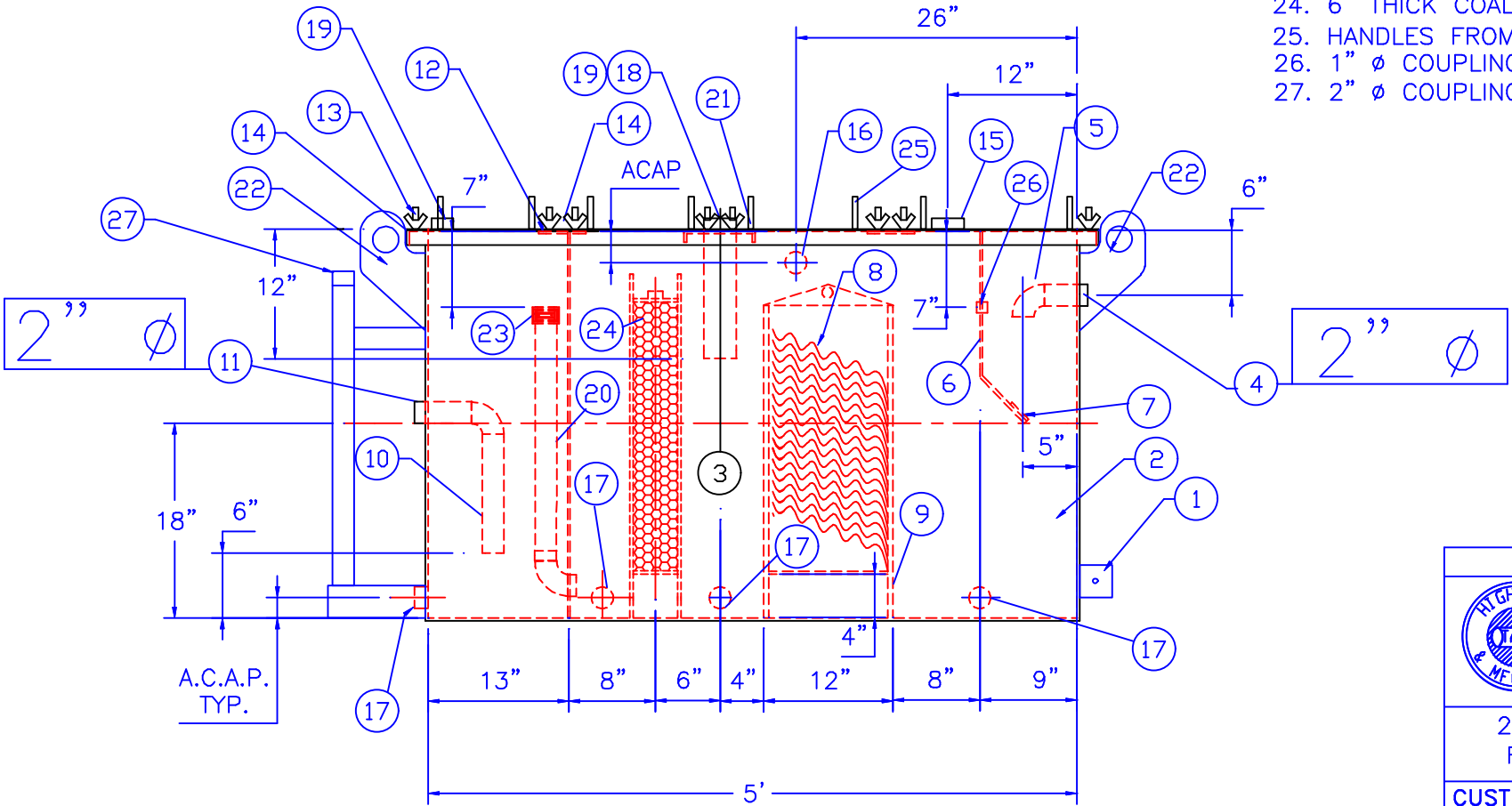
NOTES:
1. ALL INTERNAL MATERIAL IS 10 GA
2. ALL FITTINGS MUST SHIP W/ STEEL PLUGS INSTALLED
3. LIFTING LUGS DO NOT HAVE REINFORCING PLATES



END VIEW



PLAN



ELEVATION

- PROVIDED EQUIPMENT
- 3"x3"x1/4" FLAT W/ 1/2"Ø HOLE DRILLED IN CENTER (GROUNDING LUG)
 - SEDIMENT CHAMBER
 - OIL WATER SEPARATOR CHAMBER
 - THREADED INLET
 - PVC INLET ELBOW PIPING
 - VELOCITY HEAD DIFFUSION BAFFLE – 10GA
 - WEAR PLATE – 1/4"
 - REMOVABLE PARALLEL CORRUGATED PLATE COALESCER (GALVANIZED PLATES)
 - SLUDGE BAFFLE – 10GA
 - PVC OUTLET DOWNCOMER PIPE
 - THREADED OUTLET
 - (4) PIECE COVER – 7 GA
 - NUTS & BOLTS W/ LARGE WING NUTS–TYP. (CORROSION RESISTANT)
 - GASKET MATERIAL (FOR EACH REMOVABLE COVER)
 - 3"Ø NPT (CLEAN-OUT)
 - 2"Ø NPT (FITTING FOR VENT)
 - 2"Ø HALF COUPLING (DRAIN) W/ STEEL PLUG
 - 3"Ø FULL COUPLING W/ 3" Ø INTERNAL PVC PIPE
 - 2"Ø HALF COUPLING (FITTING FOR LEVEL SENSOR)
 - 2"Ø 90 ° ELBOW W/ 2" HALF COUPLING ON TOP WITH PVC RISER PIPE
 - 7 GA BRACING ACROSS TOP OF TANK W/ SENSOR & PUMP-OUT FITTINGS
 - LIFTING LUGS
 - 2"Ø FERNCO COUPLING
 - 6" THICK COALESCER MATERIAL
 - HANDLES FROM 3/4"Ø ROUND PER H.T. STANDARD
 - 1" Ø COUPLING W/ PLUG
 - 2" Ø COUPLING FOR LEAK DETECTION

NOTE :
ALL RIGHTS RESERVED. THIS DRAWING OR ANY PART THEREOF MUST NOT BE REPRODUCED IN ANY FORM WITHOUT THE WRITTEN PERMISSION OF HIGHLAND TANK.
HIGHLAND TANK SHALL BE RESPONSIBLE ONLY FOR ITEMS INDICATED ON THIS FABRICATION DRAWING UNLESS OTHERWISE NOTED. CUSTOMER IS RESPONSIBLE FOR VERIFYING CORRECTNESS OF SIZE / LOCATION OF FITTINGS , ACCESSORIES & COATINGS SHOWN ON THIS DRAWING

REVISIONS				
 Highland Tank				
200 GALLON OIL WATER SEPARATOR RECTANGULAR, HTC, DOUBLE WALL				
CUSTOMER:				
PROJECT:				
QUOTE NO:				CHK'D BY:
SCALE:	DATE:	DWG. BY:	DWG. NO.:	
3/4"=1'-0"			200 RHTCDW	