

GENERAL SPECIFICATIONS

NO. REQ'D: (1)
CAPACITY: 200 GALLONS
TYPE: RECTANGULAR, HTC, ABOVEGROUND, SINGLE WALL
MATERIAL: MILD CARBON STEEL
FLOW RATE: 10 GPM

GAUGE:

SHELL— 7 GA

HEADS— 7 GA

SURFACE PREP:

SSPC NO.10 BLAST ALL INTERIOR SURFACES

SSPC NO.6 BLAST ALL EXTERIOR SURFACES

COATING: MATERIAL THICKNESS

EXTERIOR— CHEMPRIME 3001 (3–6 MILS)

CHEMLINE 3300 (2–3 MILS)

TOP COAT "WHITE"

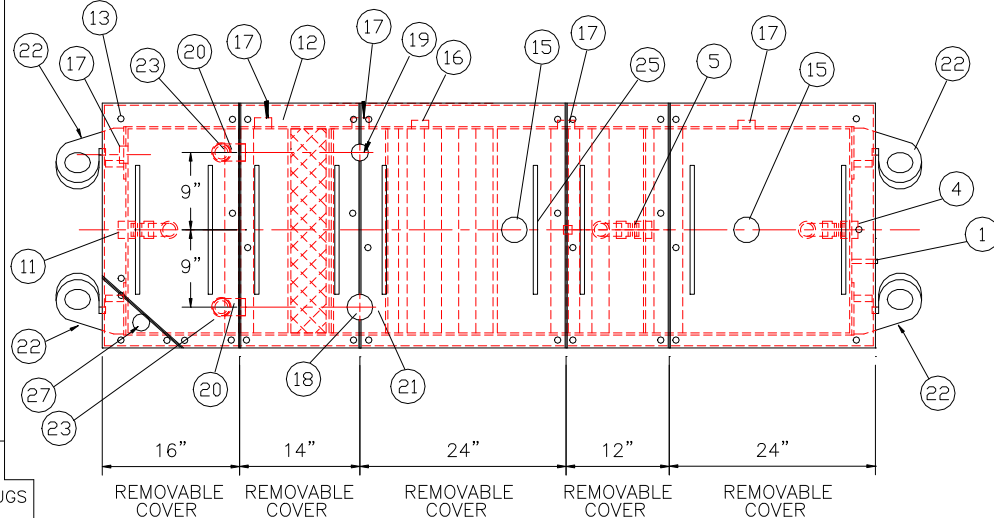
INTERIOR— CHEMLINE 4200 PW (15 MILS)

CONSTRUCTION:

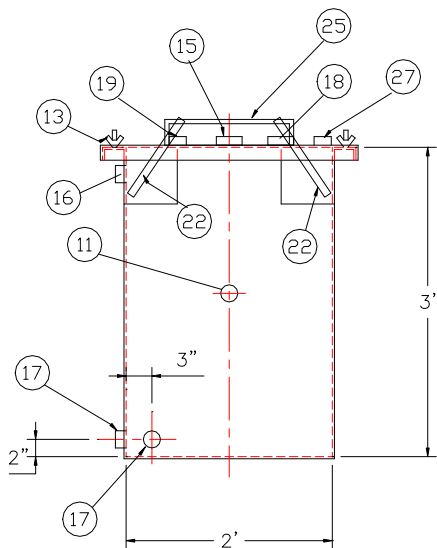
BUTT FIT & WELD ALL CORNERS IN & OUT

NOTES

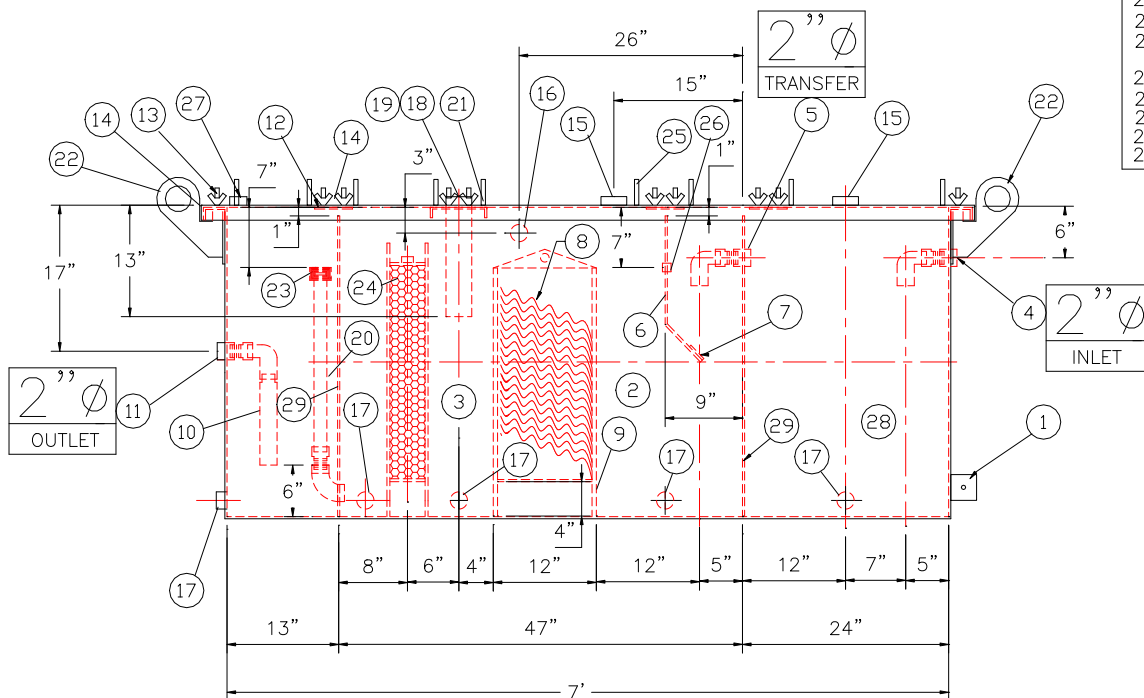
1. ALL INTERNAL MATERIAL IS 10 GA
2. ALL THREADED DRAIN FITTINGS TO HAVE STEEL THREADED PLUGS AND COATED WITH TANK
3. ALL OTHER THREADED FITTINGS TO HAVE PVC THREADED PLUGS
4. LIFTING LUGS HAVE REINFORCING PLATES



PLAN



END VIEW



ELEVATION

REQUIRED EQUIPMENT

1. 3"x3"x1/4" FLAT W/ 9/16"Ø HOLE DRILLED IN CENTER (GROUNDING LUG)
2. SEDIMENT CHAMBER
3. OIL WATER SEPARATOR CHAMBER
4. FNPT THREADED INLET W/ INTERNAL PVC PIPING
5. FNPT THREADED TRANSFER W/ PVC PIPING
6. VELOCITY HEAD DIFFUSION BAFFLE – 10GA
7. WEAR PLATE – 1/4"
8. REMOVABLE PARALLEL CORRUGATED PLATE COALESCER. CORELLA PVC PLATES (1" PLATE SPACING)
9. SLUDGE BAFFLE – 10GA
10. PVC OUTLET DOWNCOMER PIPE
11. FNPT THREADED OUTLET
12. (5) PIECE COVER W/ 5/8" BOLT HOLES – 10 GA
13. NUTS & BOLTS W/ LARGE WING NUTS–TYP. (CORROSION RESISTANT)
14. GASKET MATERIAL (FOR EACH REMOVABLE COVER)
15. 3"Ø FNPT (CLEAN–OUT)
16. 2"Ø FNPT (VENT)
17. 2"Ø FNPT HALF COUPLING (DRAIN) W/ STEEL PLUG
18. 3"Ø FNPT FULL COUPLING W/ 3" Ø INTERNAL PVC PIPE (OIL PUMPOUT)
19. 2"Ø FNPT HALF COUPLING (INTERFACE LEVEL SENSOR)
20. 2"Ø 90° ELBOW W/ 2" HALF COUPLING ON TOP WITH PVC RISER PIPE
21. 7 GA BRACING ACROSS TOP OF TANK W/ SENSOR & PUMP–OUT FITTINGS
22. 1/2" THICK LIFTING LUG ANGLED TOWARD CENTER
23. 2"Ø FERNCO COUPLING
24. 6" THICK REMOVABLE PETROSCREEN CARTRIDGE COALESCER
25. HANDLES PER H.T. STANDARD
26. 1" Ø FNPT COUPLING W/ PLUG
27. 2"Ø FNPT HALF COUPLING (SPARE)
28. SLUDGE CHAMBER
29. INTERNAL BULKHEAD

REVISIONS



Highland Tank

U.S. Patent #4,722,800 Canadian Patent # 1,296,263

200 GALLON OIL WATER SEPARATOR
RECTANGULAR, HTC-G, SINGLE WALL

CUSTOMER:

PROJECT:

QUOTE NO:

CHK'D BY:

SCALE: 3/4"=1'-0"

DATE: 1-31-14

DWG. BY:

DWG. NO:

00200RECSWHTCG

UNLESS OTHERWISE SPECIFIED DIMENSIONS ARE IN INCHES
TOLERANCES ARE + OR - 1"

NOTE :
ALL RIGHTS RESERVED. THIS DRAWING OR ANY PART THEREOF MUST NOT BE REPRODUCED IN ANY FORM WITHOUT THE WRITTEN PERMISSION OF HIGHLAND TANK.
HIGHLAND TANK SHALL BE RESPONSIBLE ONLY FOR ITEMS INDICATED ON THIS FABRICATION DRAWING UNLESS OTHERWISE NOTED. CUSTOMER IS RESPONSIBLE FOR VERIFYING CORRECTNESS OF SIZE / LOCATION OF FITTINGS , ACCESSORIES & COATINGS SHOWN ON THIS DRAWING

NO. REQ'D: (1)
CAPACITY: 200 GALLONS
TYPE: RECTANGULAR, HTC, ABOVEGROUND, SINGLE WALL
MATERIAL: MILD CARBON STEEL
FLOW RATE: 10 GPM
GAUGE:
SHELL- 7 GA
HEADS- 7 GA
SURFACE PREP:
SSPC NO.10 BLAST ALL INTERIOR SURFACES
SSPC NO.6 BLAST ALL EXTERIOR SURFACES
COATING: MATERIAL THICKNESS
EXTERIOR- CHEMPRIME 3001 (3-6 MILS)
CHEMLINE 3300 (2-3 MILS)
TOP COAT "WHITE"
INTERIOR- CHEMLINE 4200 PW (15 MILS)
CONSTRUCTION:
BUTT FIT & WELD ALL CORNERS IN & OUT

1. ALL INTERNAL MATERIAL IS 10 GA
2. ALL THREADED DRAIN FITTINGS TO HAVE STEEL THREADED PLUGS AND COATED WITH TANK
3. ALL OTHER THREADED FITTINGS TO HAVE PVC THREADED PLUGS
4. LIFTING LUGS HAVE REINFORCING PLATES



1. 3"x3"x1/4" FLAT W/ 9/16"ø HOLE DRILLED IN CENTER (GROUNDING LUG)
2. SEDIMENT CHAMBER
3. OIL WATER SEPARATOR CHAMBER
4. FNPT THREADED INLET W/ INTERNAL PVC PIPING
5. FNPT THREADED TRANSFER W/ PVC PIPING
6. VELOCITY HEAD DIFFUSION BAFFLE - 10GA
7. WEAR PLATE - 1/4"
8. REMOVABLE PARALLEL CORRUGATED PLATE COALESCER. CORELLA PVC PLATES (1" PLATE SPACING)
9. SLUDGE BAFFLE - 10GA
10. PVC OUTLET DOWNCOMER PIPE
11. FNPT THREADED OUTLET
12. (5) PIECE COVER W/ 5/8" BOLT HOLES - 10 GA
13. NUTS & BOLTS W/ LARGE WING NUTS-TYP. (CORROSION RESISTANT)
14. GASKET MATERIAL (FOR EACH REMOVABLE COVER)
15. 3"ø FNPT (CLEAN-OUT)
16. 2"ø FNPT (VENT)
17. 2"ø FNPT HALF COUPLING (DRAIN) W/ STEEL PLUG
18. 3"ø FNPT FULL COUPLING W/ 3" ø INTERNAL PVC PIPE (OIL PUMPOUT)
19. 2"ø FNPT HALF COUPLING (INTERFACE LEVEL SENSOR)
20. 2"ø 90 ° ELBOW W/ 2" HALF COUPLING ON TOP WITH PVC RISER PIPE
21. 7 GA BRACING ACROSS TOP OF TANK W/ SENSOR & PUMP-OUT FITTINGS
22. 1/2" THICK LIFTING LUG ANGLED TOWARD CENTER
23. 2"ø FERNCO COUPLING
24. 6" THICK REMOVABLE PETROSCREEN CARTRIDGE COALESCER
25. HANDLES PER H.T. STANDARD
26. 1" ø FNPT COUPLING W/ PLUG
27. 2"ø FNPT HALF COUPLING (SPARE)
28. SLUDGE CHAMBER
29. INTERNAL BULKHEAD

<div style="text-align: center;">  <h1 style="margin: 0;">Highland Tank</h1> </div>			
U.S. Patent #4,722,800		Canadian Patent # 1,296,263	
200 GALLON OIL WATER SEPARATOR RECTANGULAR, HTC-G, SINGLE WALL			
CUSTOMER:			
PROJECT:			
QUOTE NO:		CHK'D BY:	
SCALE: 3/4"=1'-0"	DATE: 1-31-14	DWG. BY:	DWG. NO.: 00200RECSWHTCG

NOTE :
ALL RIGHTS RESERVED. THIS DRAWING OR ANY PART THEREOF MUST
NOT BE REPRODUCED IN ANY FORM WITHOUT THE WRITTEN PERMISSION
OF HIGHLAND TANK.
HIGHLAND TANK SHALL BE RESPONSIBLE ONLY FOR ITEMS INDICATED
ON THIS FABRICATION DRAWING UNLESS OTHERWISE NOTED. CUSTOMER
IS RESPONSIBLE FOR VERIFYING CORRECTNESS OF SIZE / LOCATION
OF FITTINGS , ACCESSORIES & COATINGS SHOWN ON THIS DRAWING

UNLESS OTHERWISE SPECIFIED DIMENSIONS ARE IN INCHES
TOLERANCES ARE + OR - 1"