

NO. REQ'D: (1)
CAPACITY: 200 GALLONS
TYPE: RECTANGULAR, HTC, ABOVEGROUND, S-SERIES
MATERIAL: MILD CARBON STEEL
FLOW RATE: 10 GPM
GAUGE: 7 GA THROUGHOUT
SURFACE PREP:
SSPC N0.10 BLAST ALL INTERIOR SURFACES
SSPC N0.6 BLAST ALL EXTERIOR SURFACES

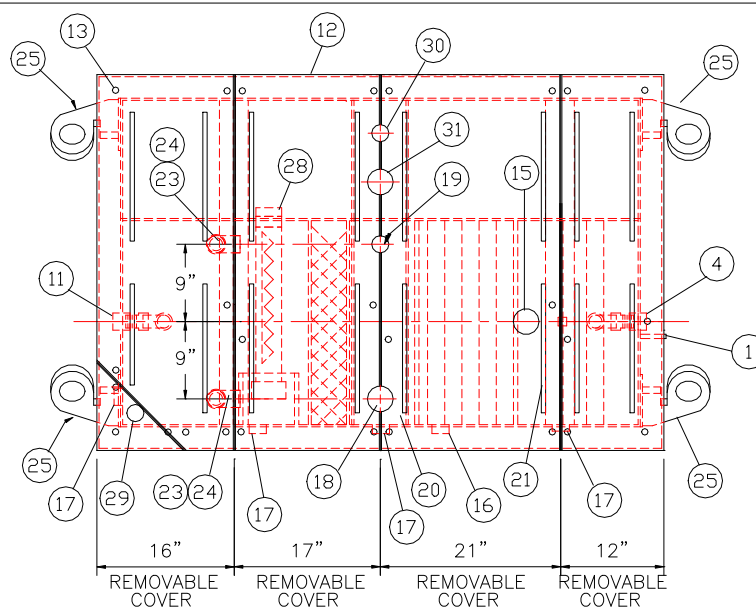
COATING:	MATERIAL	THICKNESS
EXTERIOR-	CHEMPRIME 3001	(3-6 MILS)
	CHEMLINE 3300	(2-3 MILS)
	TOP COAT "WHITE"	

INTERIOR— CHEMLINE 4200 PW (15 MILS)

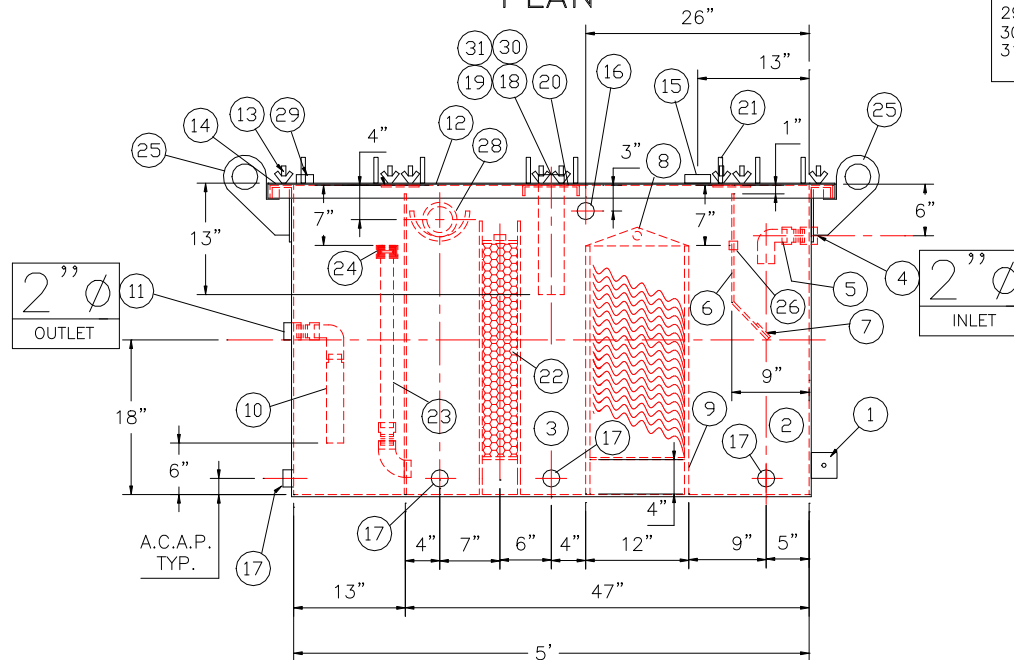
CONSTRUCTION:
BUTT FIT AND WELD ALL CORNERS IN & OUT

NOTES

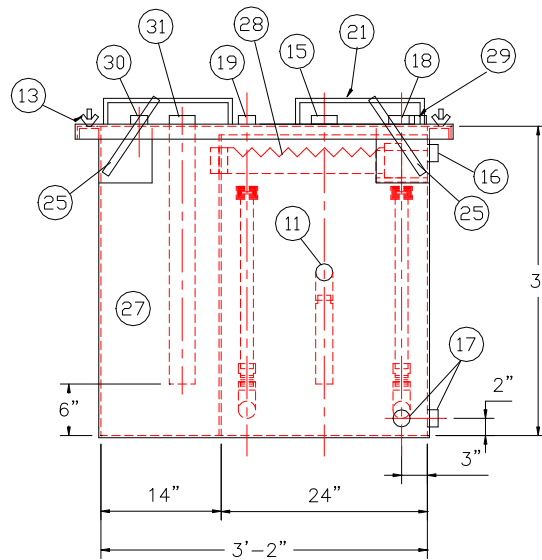
1. ALL INTERNAL MATERIAL IS 10 GA
2. ALL THREADED DRAIN FITTINGS TO HAVE STEEL THREADED PLUGS AND COATED WITH TANK
3. ALL OTHER THREADED FITTINGS TO HAVE PVC THREADED PLUGS
4. LIFTING LUGS HAVE REINFORCING PLATES



PLAN



ELEVATION



END VIEW

NOTE : ALL RIGHTS RESERVED. THIS DRAWING OR ANY PART THEREOF MUST NOT BE REPRODUCED IN ANY FORM WITHOUT THE WRITTEN PERMISSION OF HIGHLAND TANK.

HIGHLAND TANK SHALL BE RESPONSIBLE ONLY FOR ITEMS INDICATED ON THIS FABRICATION DRAWING UNLESS OTHERWISE NOTED. CUSTOMER IS RESPONSIBLE FOR VERIFYING CORRECTNESS OF SIZE / LOCATION OF FITTINGS , ACCESSORIES & COATINGS SHOWN ON THIS DRAWING.

- ## PROVIDED EQUIPMENT
1. 3"X3"X1/4" FLAT W/ 9/16"Ø HOLE DRILLED IN CENTER (GROUNDING LUG)
 2. SEDIMENT CHAMBER
 3. OIL WATER SEPARATOR CHAMBER
 4. FNPT THREADED INLET
 5. PVC INLET ELBOW PIPING
 6. VELOCITY HEAD DIFFUSION BAFFLE 10GA
 7. WEAR PLATE (1/4" MATERIAL)
 8. REMOVABLE PARALLEL CORRUGATED PLATE COALESCER (CORELLA PVC PLATES) 1" PLATE SPACING
 9. SLUDGE BAFFLE – 10GA
 10. PVC OUTLET DOWNCOMER PIPE
 11. FNPT THREADED OUTLET
 12. (2) PIECE COVER W/ 5/8" BOLT HOLES – 10 GA
 13. NUTS & BOLTS W/ LARGE WING (CORROSION RESISTANT)
 14. GASKET MATERIAL (FOR EACH REMOVABLE COVER)
 15. 3"Ø FNPT (CLEAN-OUT)
 16. 2"Ø FNPT (VENT)
 17. 2"Ø FNPT (DRAIN)
 18. 3"Ø FNPT FULL COUPLING WITH 3" INTERNAL PVC PIPE (OIL PUMP OUT IN SEPARATOR CHAMBER)
 19. 2"Ø FNPT (SEPARATOR CHAMBER INTERFACE LEVEL SENSOR)
 20. 7GA. CROSSMEMBER FOR OIL PUMP-OUT & LEVEL SENSOR FITTINGS IN SEPARATOR AND OIL HOLDING CHAMBERS
 21. HANDLES PER H.T. STANDARD
 22. 6" THICK REMOVABLE PETROSCREEN CARTRIDGE COALESCER
 23. 2"Ø STEEL ELBOW W/ COUPLING WELDED TO TOP FOR PVC RISER PIPES
 24. 2"Ø ADJUSTABLE FERNCO COUPLING
 25. 1/2" THICK LIFTING LUG ANGLED TOWARD CENTER
 26. 1"Ø FNPT COUPLING W/ PLUG
 27. OIL HOLDING COMPARTMENT
 28. 3" FNPT COUPLING WITH SAWTOOTH TYPE PVC OIL SKIMMER AND PIPE SUPPORT SHELF
 29. 2"Ø FNPT HALF COUPLING (SPARE)
 30. 2"Ø FNPT (HIGH LEVEL OIL HOLDING CHAMBER LEVEL SENSOR)
 31. 3"Ø FNPT FULL COUPLING WITH 3" INTERNAL PVC PIPE (OIL PUMP OUT IN OIL HOLDING CHAMBER)

REVISIONS



Highland Tank

U.S. Patent #4,722,800 Canadian Patent # 1,296,263

200 GALLON OIL WATER SEPARATOR
RECTANGULAR, HTC, SINGLE WALL, "S" SERIES

CUSTOMER:

PROJECT:

QUOTE NO:

SCALE:
3/4"=1'-0"

DATE:

DWG. BY:	
----------	--

	1980	1981	1982	1983	1984	1985	1986	1987	1988	1989	1990	1991	1992	1993	1994	1995	1996	1997	1998	1999	2000	2001	2002	2003	2004	2005	2006	2007	2008	2009	2010	2011	2012	2013	2014	2015	2016	2017	2018	2019	2020	2021	2022	2023	2024	2025	2026	2027	2028	2029	2030	2031	2032	2033	2034	2035	2036	2037	2038	2039	2040	2041	2042	2043	2044	2045	2046	2047	2048	2049	2050	2051	2052	2053	2054	2055	2056	2057	2058	2059	2060	2061	2062	2063	2064	2065	2066	2067	2068	2069	2070	2071	2072	2073	2074	2075	2076	2077	2078	2079	2080	2081	2082	2083	2084	2085	2086	2087	2088	2089	2090	2091	2092	2093	2094	2095	2096	2097	2098	2099	2100	2101	2102	2103	2104	2105	2106	2107	2108	2109	2110	2111	2112	2113	2114	2115	2116	2117	2118	2119	2120	2121	2122	2123	2124	2125	2126	2127	2128	2129	2130	2131	2132	2133	2134	2135	2136	2137	2138	2139	2140	2141	2142	2143	2144	2145	2146	2147	2148	2149	2150	2151	2152	2153	2154	2155	2156	2157	2158	2159	2160	2161	2162	2163	2164	2165	2166	2167	2168	2169	2170	2171	2172	2173	2174	2175	2176	2177	2178	2179	2180	2181	2182	2183	2184	2185	2186	2187	2188	2189	2190	2191	2192	2193	2194	2195	2196	2197	2198	2199	2200	2201	2202	2203	2204	2205	2206	2207	2208	2209	2210	2211	2212	2213	2214	2215	2216	2217	2218	2219	2220	2221	2222	2223	2224	2225	2226	2227	2228	2229	2230	2231	2232	2233	2234	2235	2236	2237	2238	2239	2240	2241	2242	2243	2244	2245	2246	2247	2248	2249	2250	2251	2252	2253	2254	2255	2256	2257	2258	2259	2260	2261	2262	2263	2264	2265	2266	2267	2268	2269	2270	2271	2272	2273	2274	2275	2276	2277	2278	2279	2280	2281	2282	2283	2284	2285	2286	2287	2288	2289	2290	2291	2292	2293	2294	2295	2296	2297	2298	2299	2300	2301	2302	2303	2304	2305	2306	2307	2308	2309	2310	2311	2312	2313	2314	2315	2316	2317	2318	2319	2320	2321	2322	2323	2324	2325	2326	2327	2328	2329	2330	2331	2332	2333	2334	2335	2336	2337	2338	2339	2340	2341	2342	2343	2344	2345	2346	2347	2348	2349	2350	2351	2352	2353	2354	2355	2356	2357	2358	2359	2360	2361	2362	2363	2364	2365	2366	2367	2368	2369	2370	2371	2372	2373	2374	2375	2376	2377	2378	2379	2380	2381	2382	2383	2384	2385	2386	2387	2388	2389	2390	2391	2392	2393	2394	2395	2396	2397	2398	2399	2400	2401	2402	2403	2404	2405	2406	2407	2408	2409	2410	2411	2412	2413	2414	2415	2416	2417	2418	2419	2420	2421	2422	2423	2424	2425	2426	2427	2428	2429	2430	2431	2432	2
--	------	------	------	------	------	------	------	------	------	------	------	------	------	------	------	------	------	------	------	------	------	------	------	------	------	------	------	------	------	------	------	------	------	------	------	------	------	------	------	------	------	------	------	------	------	------	------	------	------	------	------	------	------	------	------	------	------	------	------	------	------	------	------	------	------	------	------	------	------	------	------	------	------	------	------	------	------	------	------	------	------	------	------	------	------	------	------	------	------	------	------	------	------	------	------	------	------	------	------	------	------	------	------	------	------	------	------	------	------	------	------	------	------	------	------	------	------	------	------	------	------	------	------	------	------	------	------	------	------	------	------	------	------	------	------	------	------	------	------	------	------	------	------	------	------	------	------	------	------	------	------	------	------	------	------	------	------	------	------	------	------	------	------	------	------	------	------	------	------	------	------	------	------	------	------	------	------	------	------	------	------	------	------	------	------	------	------	------	------	------	------	------	------	------	------	------	------	------	------	------	------	------	------	------	------	------	------	------	------	------	------	------	------	------	------	------	------	------	------	------	------	------	------	------	------	------	------	------	------	------	------	------	------	------	------	------	------	------	------	------	------	------	------	------	------	------	------	------	------	------	------	------	------	------	------	------	------	------	------	------	------	------	------	------	------	------	------	------	------	------	------	------	------	------	------	------	------	------	------	------	------	------	------	------	------	------	------	------	------	------	------	------	------	------	------	------	------	------	------	------	------	------	------	------	------	------	------	------	------	------	------	------	------	------	------	------	------	------	------	------	------	------	------	------	------	------	------	------	------	------	------	------	------	------	------	------	------	------	------	------	------	------	------	------	------	------	------	------	------	------	------	------	------	------	------	------	------	------	------	------	------	------	------	------	------	------	------	------	------	------	------	------	------	------	------	------	------	------	------	------	------	------	------	------	------	------	------	------	------	------	------	------	------	------	------	------	------	------	------	------	------	------	------	------	------	------	------	------	------	------	------	------	------	------	------	------	------	------	------	------	------	------	------	------	------	------	------	------	------	------	------	------	------	------	------	------	------	------	------	------	------	------	------	------	------	------	------	------	------	------	------	------	------	---

CHK'D BY:

DWG. NO.:

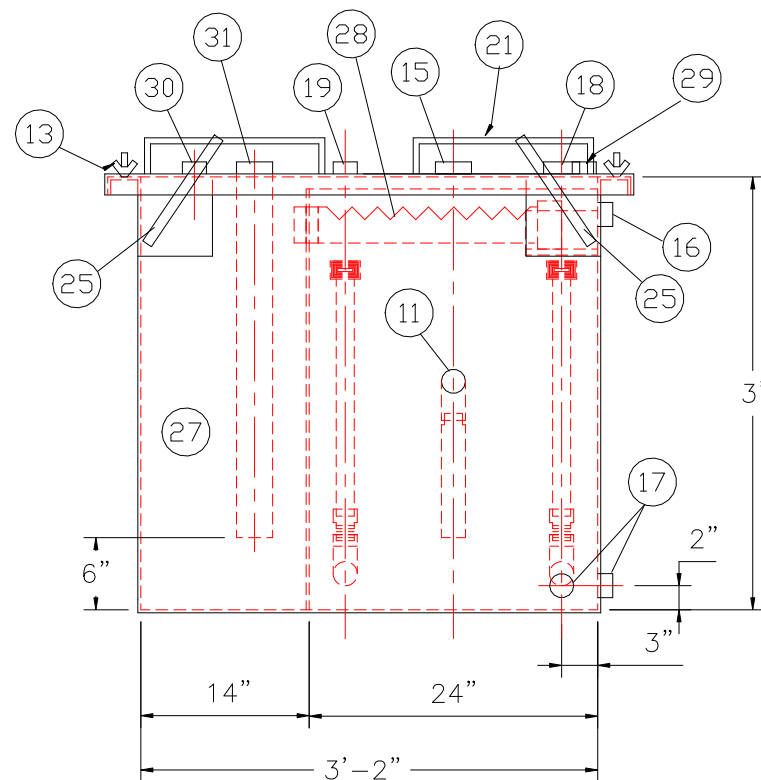
00200RFSWHTCS

NO. REQ'D: (1)
CAPACITY: 200 GALLONS
TYPE: RECTANGULAR, HTC, ABOVEGROUND, S-SERIES
MATERIAL: MILD CARBON STEEL
FLOW RATE: 10 GPM
GAUGE: 7 GA THROUGHOUT
SURFACE PREP:
SSPC NO.10 BLAST ALL INTERIOR SURFACES
SSPC NO.6 BLAST ALL EXTERIOR SURFACES

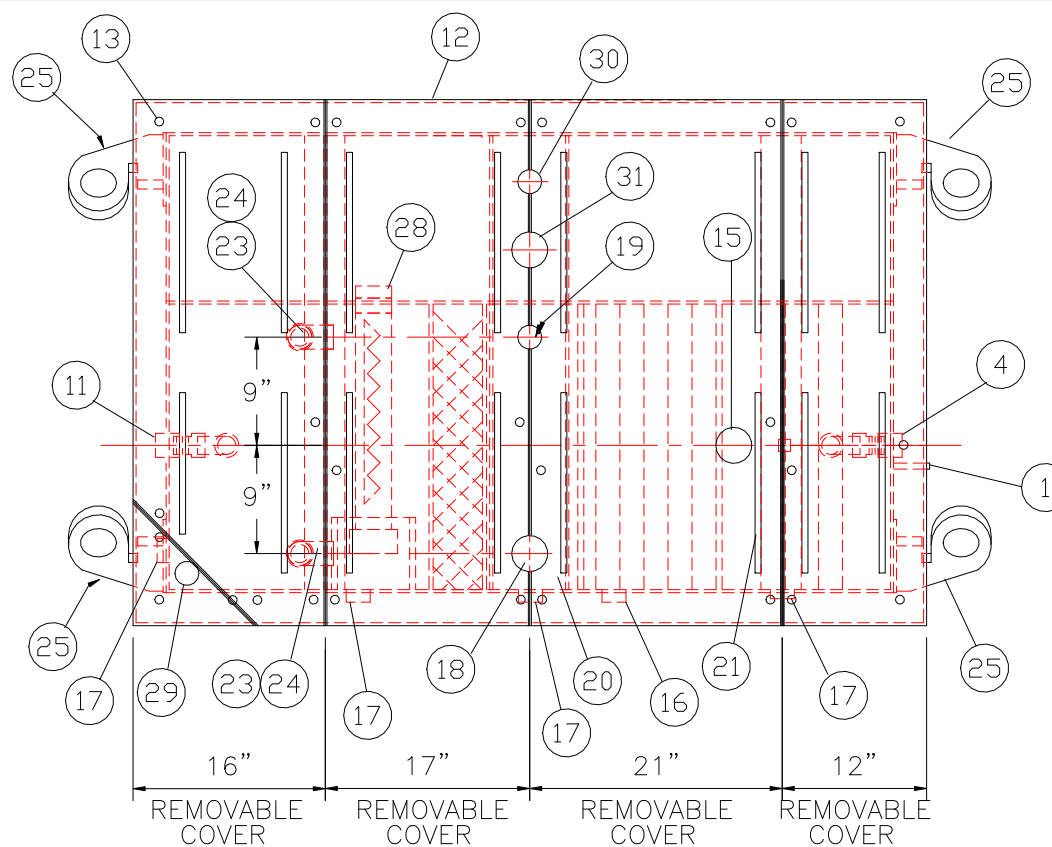
COATING:	MATERIAL	THICKNESS
EXTERIOR—	CHEMPRIME 3001	(3—6 MILS)
	CHEMLINE 3300	(2—3 MILS)
	TOP COAT "WHITE"	
INTERIOR—	CHEMLINE 4200 PW	(15 MILS)

CONSTRUCTION:
BUTT FIT AND WELD ALL CORNERS IN & OUT

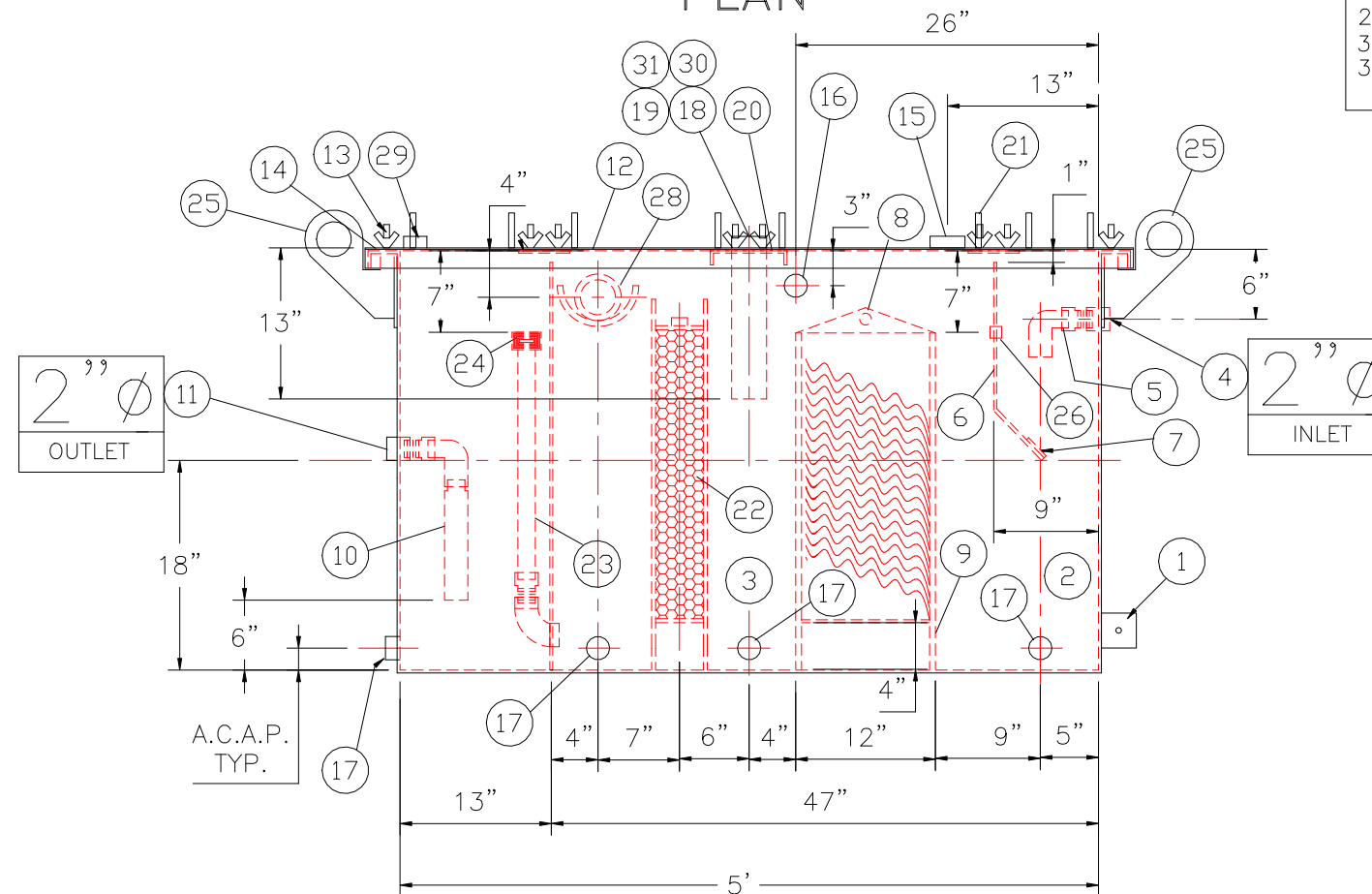
1. ALL INTERNAL MATERIAL IS 10 GA
2. ALL THREADED DRAIN FITTINGS TO HAVE STEEL THREADED PLUGS AND COATED WITH TANK
3. ALL OTHER THREADED FITTINGS TO HAVE PVC THREADED PLUGS
4. LIFTING LUGS HAVE REINFORCING PLATES



NOTE :
ALL RIGHTS RESERVED. THIS DRAWING OR ANY PART THEREOF MUST
NOT BE REPRODUCED IN ANY FORM WITHOUT THE WRITTEN PERMISSION
OF HIGHLAND TANK.
HIGHLAND TANK SHALL BE RESPONSIBLE ONLY FOR ITEMS INDICATED
ON THIS FABRICATION DRAWING UNLESS OTHERWISE NOTED. CUSTOMER
IS RESPONSIBLE FOR VERIFYING CORRECTNESS OF SIZE / LOCATION
OF FITTINGS , ACCESSORIES & COATINGS SHOWN ON THIS DRAWING



PLAN



ELEVATION

1. 3"x3"x1/4" FLAT W/ 9/16"Ø HOLE DRILLED IN CENTER (GROUNDING LUG)
2. SEDIMENT CHAMBER
3. OIL WATER SEPARATOR CHAMBER
4. FNPT THREADED INLET
5. PVC INLET ELBOW PIPING
6. VELOCITY HEAD DIFFUSION BAFFLE 10GA
7. WEAR PLATE (1/4" MATERIAL)
8. REMOVABLE PARALLEL CORRUGATED PLATE COALESCER (CORELLA PVC PLATES) 1" PLATE SPACING
9. SLUDGE BAFFLE - 10GA
10. PVC OUTLET DOWNCOMER PIPE
11. FNPT THREADED OUTLET
12. (2) PIECE COVER W/ 5/8" BOLT HOLES - 10 GA
13. NUTS & BOLTS W/ LARGE WING (CORROSION RESISTANT)
14. GASKET MATERIAL (FOR EACH REMOVABLE COVER)
15. 3"Ø FNPT (CLEAN-OUT)
16. 2"Ø FNPT (VENT)
17. 2"Ø FNPT (DRAIN)
18. 3"Ø FNPT FULL COUPLING WITH 3" INTERNAL PVC PIPE (OIL PUMP OUT IN SEPARATOR CHAMBER)
19. 2"Ø FNPT (SEPARATOR CHAMBER INTERFACE LEVEL SENSOR)
20. 7GA. CROSSMEMBER FOR OIL PUMP-OUT & LEVEL SENSOR FITTINGS IN SEPARATOR AND OIL HOLDING CHAMBERS
21. HANDLES PER H.T. STANDARD
22. 6" THICK REMOVABLE PETROSCREEN CARTRIDGE COALESCER
23. 2"Ø STEEL ELBOW W/ COUPLING WELDED TO TOP FOR PVC RISER PIPES
24. 2"Ø ADJUSTABLE FERNCO COUPLING
25. 1/2" THICK LIFTING LUG ANGLED TOWARD CENTER
26. 1"Ø FNPT COUPLING W/ PLUG
27. OIL HOLDING COMPARTMENT
28. 3" FNPT COUPLING WITH SAWTOOTH TYPE PVC OIL SKIMMER AND PIPE SUPPORT SHELF
29. 2"Ø FNPT HALF COUPLING (SPARE)
30. 2"Ø FNPT (HIGH LEVEL OIL HOLDING CHAMBER LEVEL SENSOR)
31. 3"Ø FNPT FULL COUPLING WITH 3" INTERNAL PVC PIPE (OIL PUMP OUT IN OIL HOLDING CHAMBER)

REVISIONS



Highland Tank

U.S. Patent #4,722,800 Canadian Patent # 1,296,263

200 GALLON OIL WATER SEPARATOR RECTANGULAR, HTC, SINGLE WALL,"S" SERIES

CUSTOMER:

PROJECT:

QUOTE NO:

CHK'D BY:

SCALE:
3/4"=1'-0"

DATE:

DWG. BY:	
----------	--

DWG. NO.:

DWG. NO.:
00200RECSWHTCS