

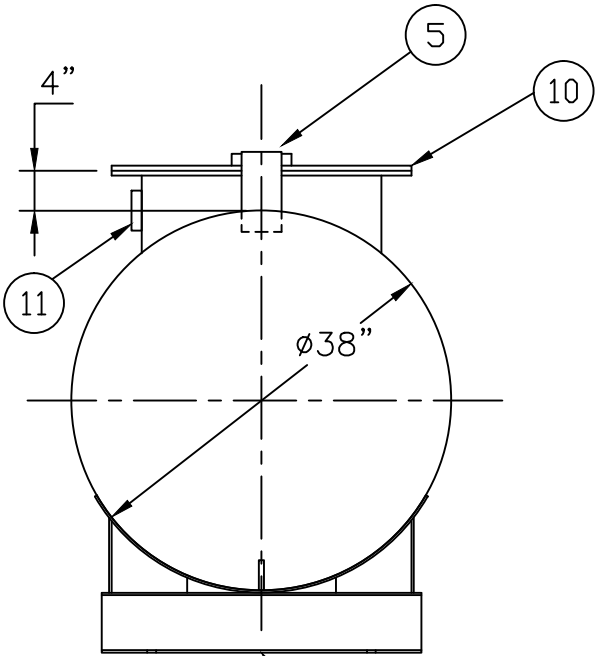
GENERAL SPECIFICATIONS

NO. REQ'D: (1)  
CAPACITY: 240 GALLON  
TYPE: SINGLE WALL, ABOVEGROUND  
MATERIAL: MILD CARBON STEEL  
GAUGE:  
SHELL- 12 GA.  
HEADS- 12 GA.

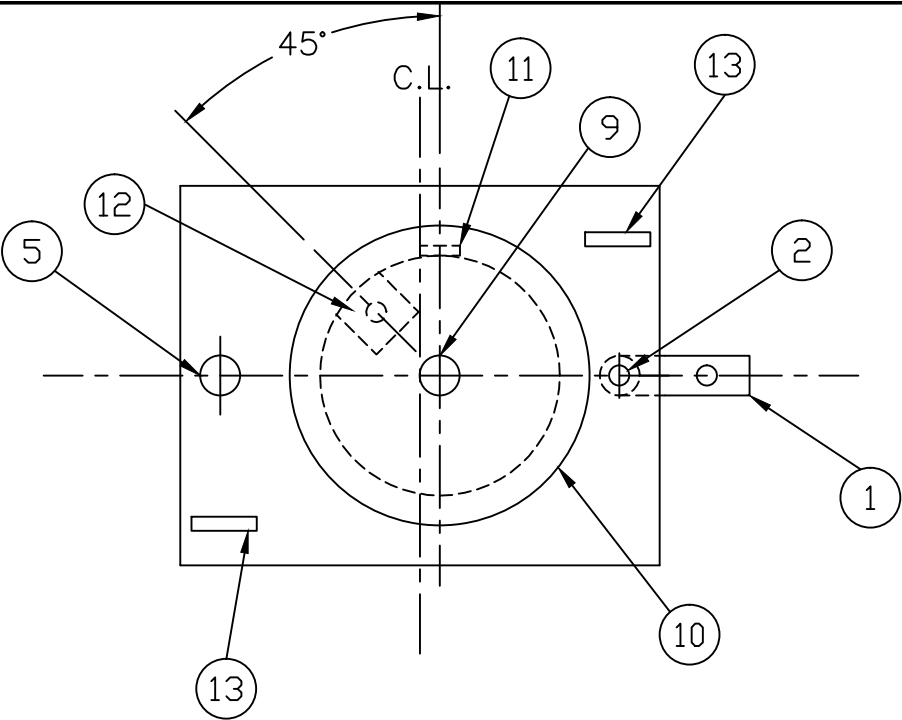
SURFACE PREP:  
SSPC-SP 6 BLAST EXTERIOR, SSPC-SP 10 BLAST INTERIOR

COATING: MATERIAL / THICKNESS  
EXTERIOR- WHITE URETHANE (3-5 MILS)  
INTERIOR- HighDRO®-LINER PLUS POLYURETHANE (15 MILS)

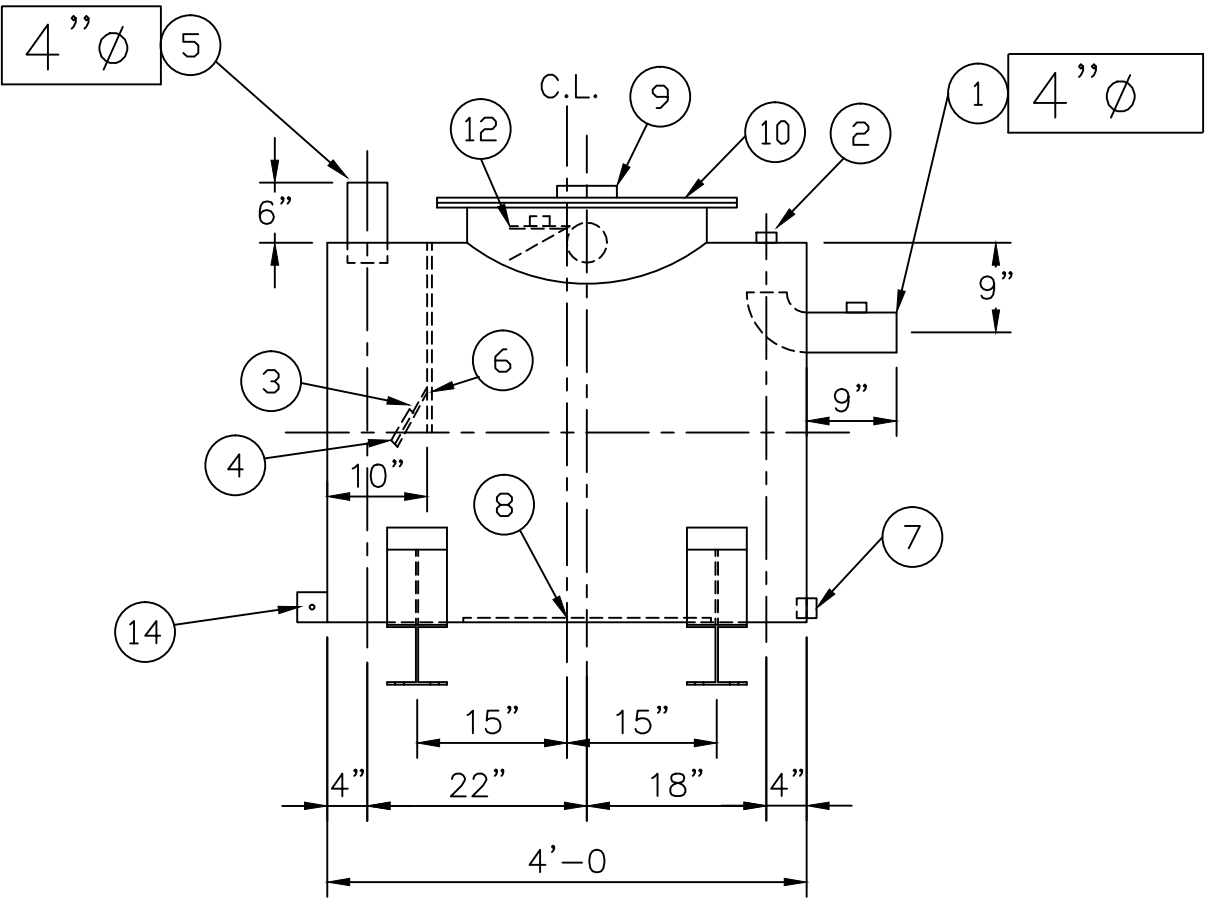
CONSTRUCTION : LAP FIT & WELD ALL EXTERIOR SEAMS  
OPERATING PRESSURE : ATMOSPHERIC  
LIFTING LUGS PLACED AS NEEDED PER FAB SHOP



END VIEW



PLAN



ELEVATION

PROVIDED EQUIPMENT

- 1. 4"Ø PIPE STUB W/ 2" NPT FOR VENT (OVERFLOW SKIMMER)
- 2. 2"Ø FTG. FOR VENT
- 3. VELOCITY HEAD DIFFUSION BAFFLE (REMOVABLE)
- 4. WEAR PLATE
- 5. 4"Ø PIPE STUB (INLET)
- 6. UNDERFLOW BAFFLE
- 7. 2"Ø FULL CPLG. FOR PUMP MOUNTING
- 8. STRIKER PLATES
- 9. 4"Ø FTG. FOR GAUGE WITH PLUG
- 10. 24"Ø MANWAY
- 11. 4"Ø FTG. FOR PUMP & LEVEL SENSOR CONDUIT
- 12. 2"Ø FTG. W/ MOUNT FOR LEVEL SENSOR
- 13. LIFTING LUG
- 14. GROUNDING LUG

NOTE :  
ALL RIGHTS RESERVED. THIS DRAWING OR ANY PART THEREOF MUST NOT BE REPRODUCED IN ANY FORM WITHOUT THE WRITTEN PERMISSION OF HIGHLAND TANK.  
HIGHLAND TANK SHALL BE RESPONSIBLE ONLY FOR ITEMS INDICATED ON THIS FABRICATION DRAWING UNLESS OTHERWISE NOTED. CUSTOMER IS RESPONSIBLE FOR VERIFYING CORRECTNESS OF SIZE / LOCATION OF FITTINGS , ACCESSORIES & COATINGS SHOWN ON THIS DRAWING

**Highland Tank®**

HighDRO® WATER STORAGE TANKS  
240 GALLON RAINWATER COLLECTION TANK

CUSTOMER:

PROJECT:

QUOTE NO:

SCALE: DATE: DWG. BY: DWG. NO:

NTS 9/17/10 00240AHSWHDRECT38