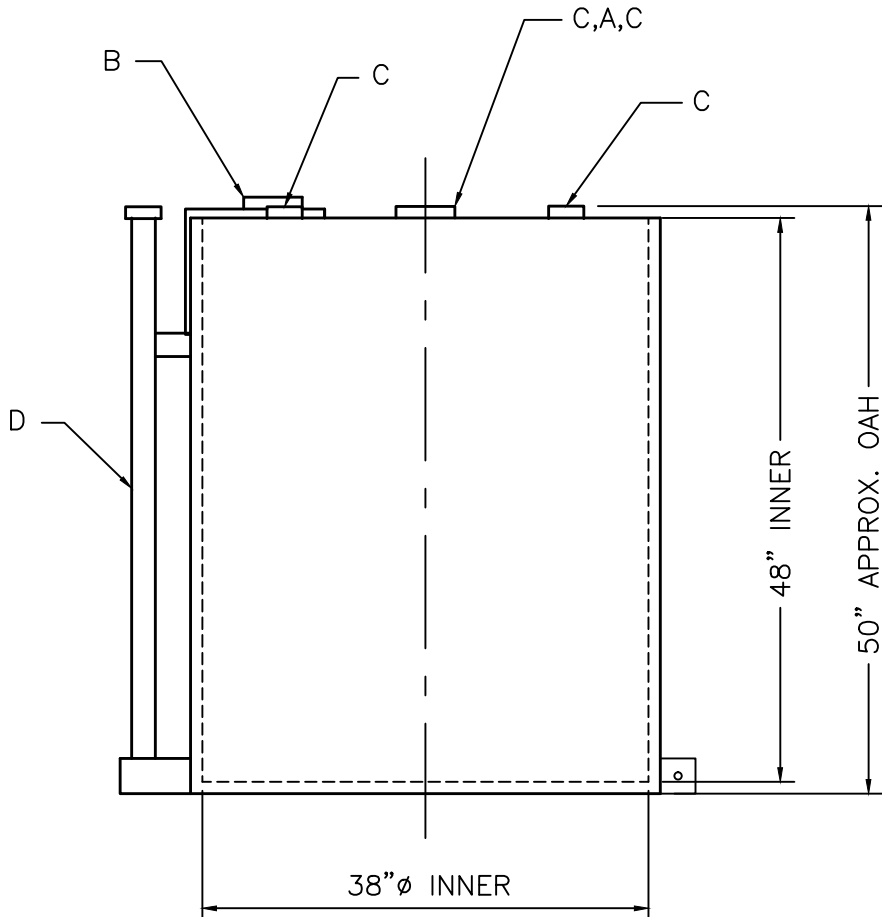
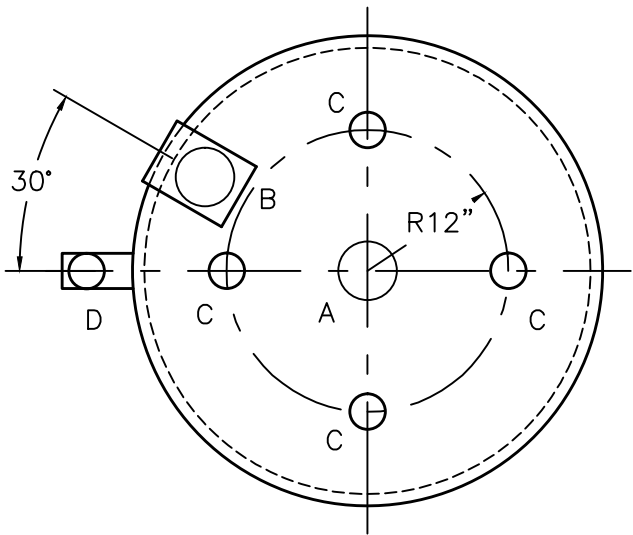


NOTE: ALL RIGHTS RESERVED. THIS DRAWING MUST NOT BE REPRODUCED IN ANY FORM WITHOUT THE WRITTEN PERMISSION OF HIGHLAND TANK®. HIGHLAND TANK® SHALL BE RESPONSIBLE ONLY FOR ITEMS INDICATED ON THIS FABRICATION DRAWING UNLESS OTHERWISE NOTED. CUSTOMER IS RESPONSIBLE FOR VERIFYING CORRECTNESS OF SIZE AND LOCATION OF FITTINGS, ACCESSORIES, AND COATINGS SHOWN ON THIS DRAWING.

TOUCH UP OF FINISHED PAINT IS REQUIRED BY INSTALLATION CONTRACTOR. TOUCH UP PAINT SHIPPED WITH TANK.



DESIGN DATA


| |
|---|
| CAPACITY – 240 GALLONS |
| TYPE – VERTICAL DOUBLE WALL |
| NO. REQ. – – |
| OPERATING PRESSURE – ATMOSPHERIC |
| SPECIFIC GRAVITY = 1.0 |
| TANK MATERIAL – MILD CARBON STEEL |
| THICKNESS – TOP– SINGLE WALL 12 GA FLAT FLANGED |
| THICKNESS – INNER– SHELL: 12 GA BOTTOM: 12 GA |
| THICKNESS – OUTER– SHELL: 12 GA BOTTOM: 12 GA |
| CONSTRUCTION – LAP WELD OUTSIDE ONLY– INNER & OUTER |
| TOP & BOTTOM HEADS ARE FLAT FLANGED |
| TANK TEST – INNER: 2 PSIG, OUTER:– 2 PSIG & FULL VACUUM |
| INT. FINISH – NONE – |
| EXT. FINISH – SHOP PRIMER – |
| LABEL – UL 142 |

LEGEND

| | |
|---|---|
| A | 4” HALF COUP. (PRIMARY EMERGENCY VENT) |
| B | 4”Ø HALF COUPLING IN INTERSTICE EXTENSION BOX . MARK WITH WANRING LABEL – SECONDARY EMERGENCY VENT USE ONLY |
| C | 2” FNPT FITTING |
| D | 2” INTERSTITIAL MONITOR PIPE |
| E | – |
| F | – |

NOTES

- SEE PLAN VIEW FOR TRUE ORIENTATION AND LOCATION OF FITTING
- LIFTING LUGS FOR UNLOADING UNIT & STANDING UNIT UPRIGHT TO BE PLACED AS NEEDED BY FABRICATION SHOP
- A 3x3x¼” STEEL GROUNDING LUG WITH A ⅝”Ø HOLE IN CENTER TO BE PLACED ON SHELL AT BOTTOM OF TANK IN LINE WITH LIFTING LUGS

| | | | | | |
|---|-------|----------------------|--------------------------|-----------|--|
| △ | | | | | |
|  | | Highland Tank | | | |
| UNLESS NOTED, TOLERANCES ARE +/- 1" | | | | | |
| 240 GAL 38”Ø DW VERTICAL | | | | | |
| CUSTOMER: | | | | | |
| PROJECT: | | | | | |
| QUOTE NO: | | | | CHK'D BY: | |
| SCALE: 3/4"=1'-0" | DATE: | DWG. BY: | DWG. NO.: 00240AVDW38 | | |