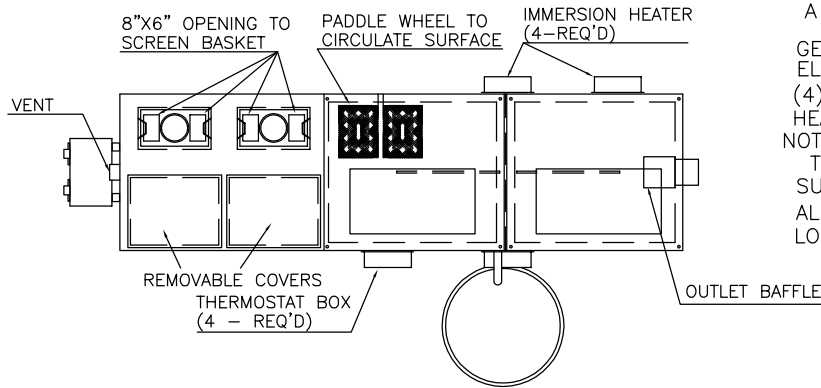


GENERAL SPECIFICATIONS

NO. REQ'D:
MODEL: 250 L-R
MATERIAL: 304 STAINLESS STEEL 2-B FINISH
GAUGE OR THICKNESS OF MATERIAL
10 ga. THROUGHOUT
BUILD IN ACCORDENCE WITH U.L. 1D42
STATIC WATER CAPACITY: 343.6 gal
GREASE HOLDING CAPACITY: 2,070 lbs.
RETENTION TIME: 81.43 SEC.



ELECTRICAL INFORMATION

UNIT MUST BE PLUGGED INTO
A GFI(GROUND FAULT INTERRUPT)RECEPTACLE.

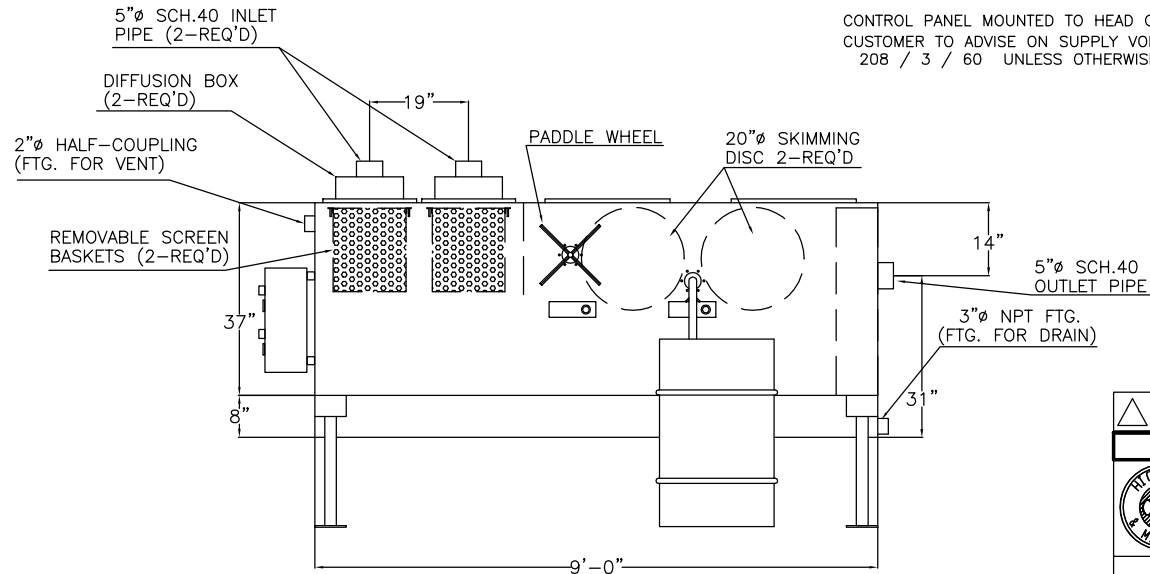
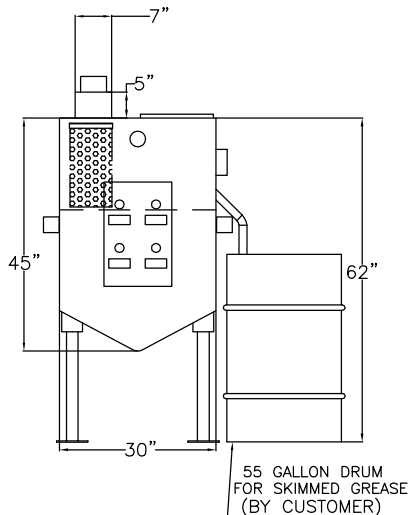
GEARMOTOR- .933 FLA. 115V, 60hz
ELECTRIC HEATING ELEMENT- 115 V, 1500 W
(4) DIRECT IMMERSION ELECTRIC
HEATING ELEMENTS 16.225 FLA EA.

NOTE:

THE A.G.I. IS NOT A TRAP FOR SEWER GAS WE
SUGGEST A TRAP DOWN STREAM FROM THE A.G.I.
ALL ELECTRICAL & PLUMBING SUBJECT TO
LOCAL CODES

NOTE:

CONTROL PANEL MOUNTED TO HEAD OF TANK
CUSTOMER TO ADVISE ON SUPPLY VOLTAGE & PHASE
208 / 3 / 60 UNLESS OTHERWISE NOTED



NOTE: ALL RIGHTS RESERVED. THIS
DRAWING MUST NOT BE REPRODUCED IN
ANY FORM WITHOUT THE WRITTEN
PERMISSION OF HIGHLAND TANK®.
HIGHLAND TANK® SHALL BE RESPONSIBLE
ONLY FOR ITEMS INDICATED ON THIS
FABRICATION DRAWING UNLESS OTHERWISE
NOTED. CUSTOMER IS RESPONSIBLE FOR
VERIFYING CORRECTNESS OF SIZE AND
LOCATION OF FITTINGS, ACCESSORIES, AND
COATINGS SHOWN ON THIS DRAWING.

REVISIONS			
 Highland Tank			
AGI 250 LEFT - RIGHT SALES DRAWINGS			
CUSTOMER:			
PROJECT:			
QUOTE NO:		CHK'D BY:	
SCALE:	DATE:	DWG BY:	DWG NO:
1/2"=1'	8/18/09	CNR	00250AGIL-RDD