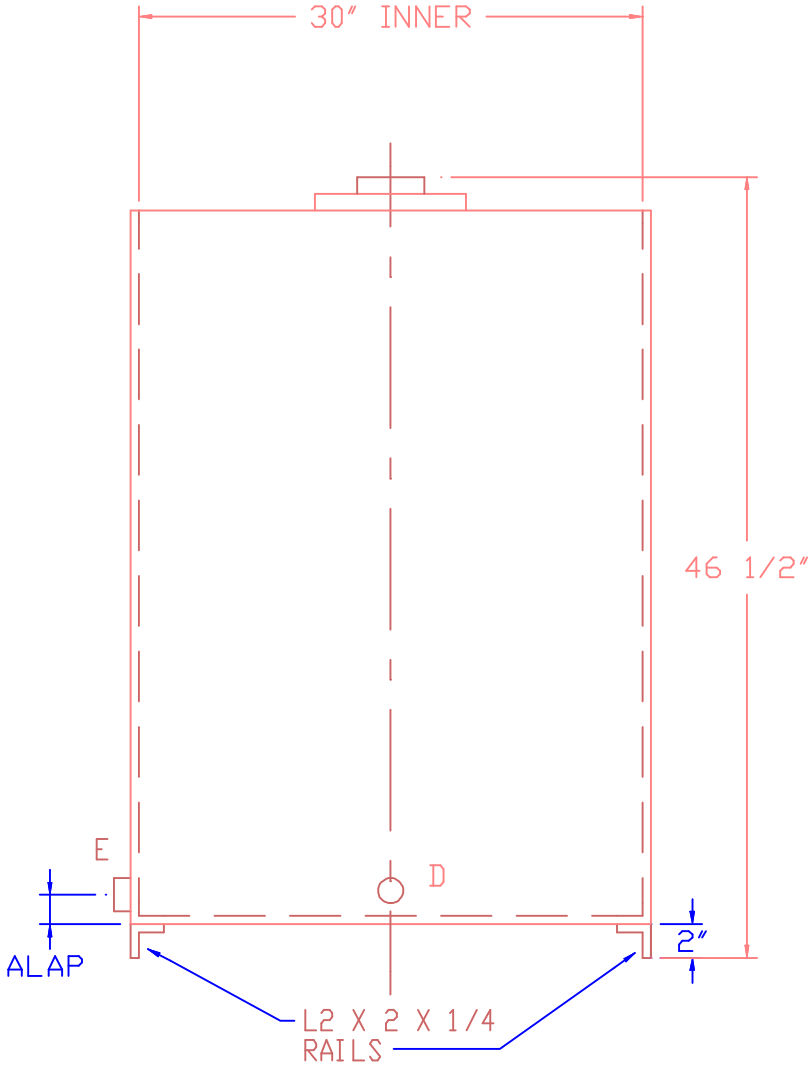
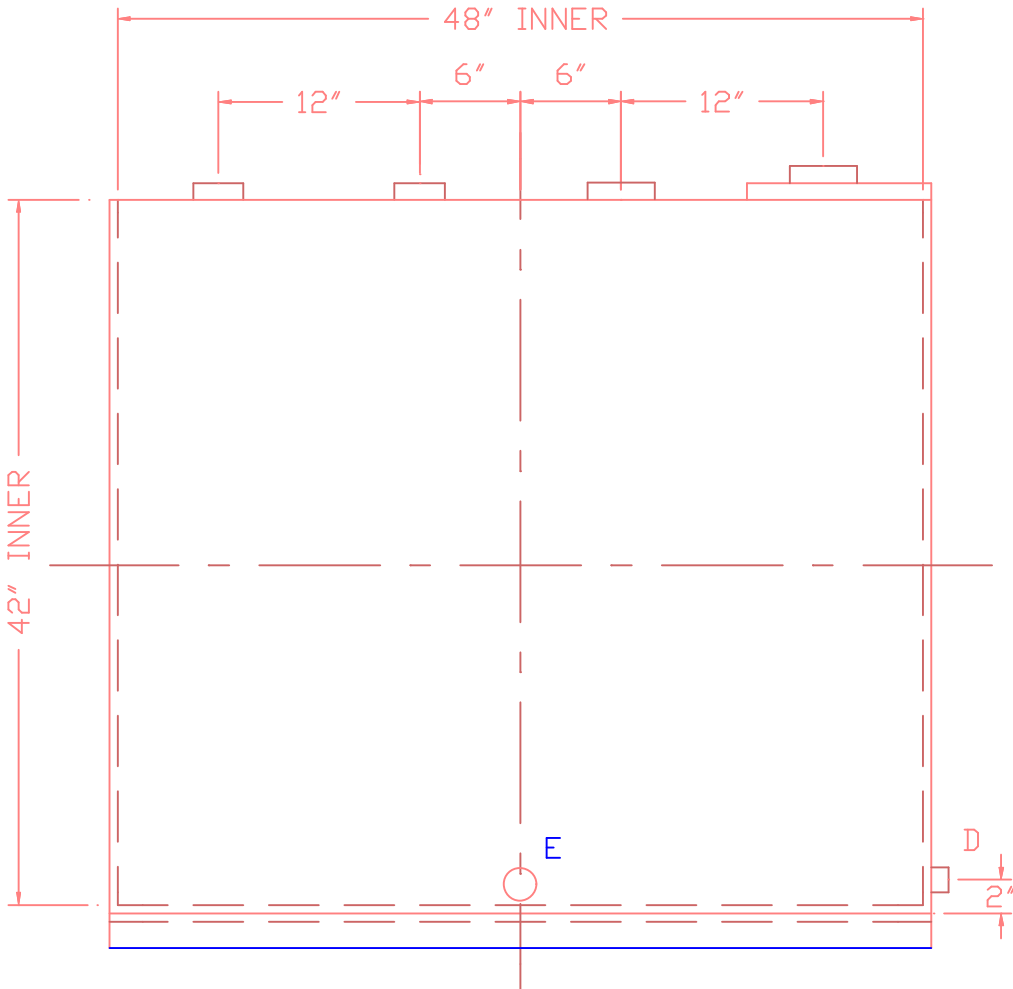
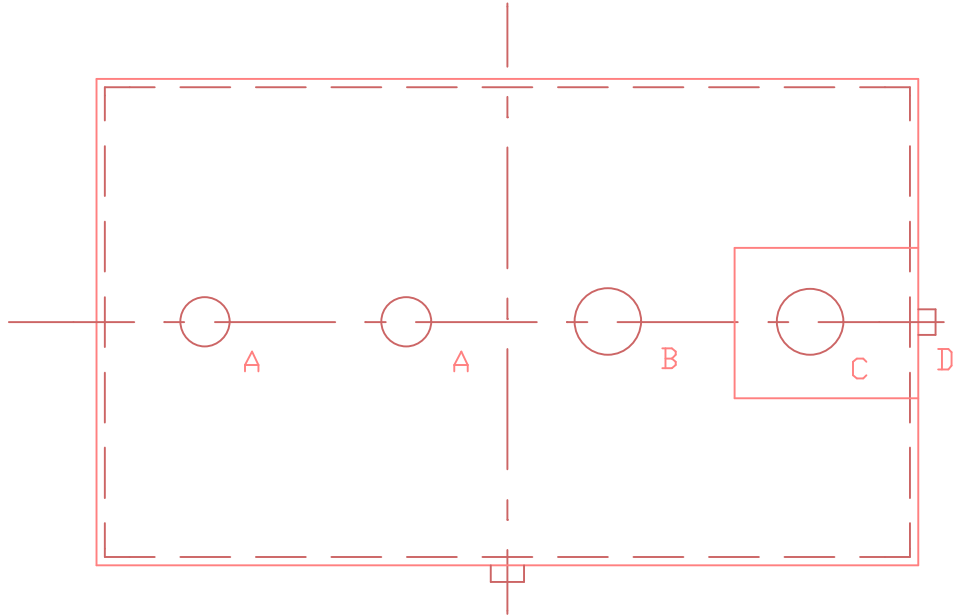



NOTE:
ALL RIGHTS RESERVED, THIS DRAWING OR ANY PART THEREOF MUST NOT BE REPRODUCED IN ANY FORM WITHOUT THE WRITTEN PERMISSION OF HIGHLAND TANK
HIGHLAND TANK SHALL BE RESPONSIBLE ONLY FOR ITEMS INDICATED ON THIS FABRICATION DRAWING UNLESS OTHERWISE NOTED. CUSTOMER IS RESPONSIBLE FOR VERIFYING CORRECTNESS OF SIZE / LOCATION OF FITTINGS, ACCESSORIES & COATINGS SHOWN ON THIS DRAWING

CAPACITY - 260 GALLON
MATERIAL - 12 GA MILD CARBON STEEL
CONSTR - LAP WELD OUTSIDE ONLY
TEST - 2 PSIG
PAINT - SHOP PRIMER

LABEL - UL142



- A 2" FITTING
- B 3" FITTING
- C 3" FITTING MOUNTED IN INTERSTICE
EXTENSION BOX - SECONDARY
EMERGENCY VENT
- D 1/2" FITTING THROUGH OUTER
SHELL ONLY WITH BUTTON SITE
GLASS
- E 3/4" HALF COUPLING

| | | | | |
|---|------------------|-----------------|-----------|------------------|
| △ | | | | |
|  Highland Tank | | | | |
| 260 GAL DW CLUSTER TANK | | | | |
| CUSTOMER: --- | | | | |
| PROJECT: --- | | | | |
| QUOTE NO: --- | | | | |
| SCALE 1" = 1' -0" | DATE 04/05/02 | DRAWN BY 001 | CHK' D BY | DWG NO DCL260 |