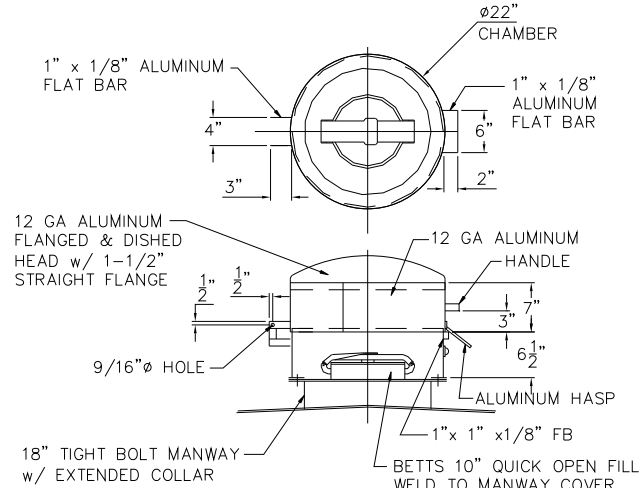
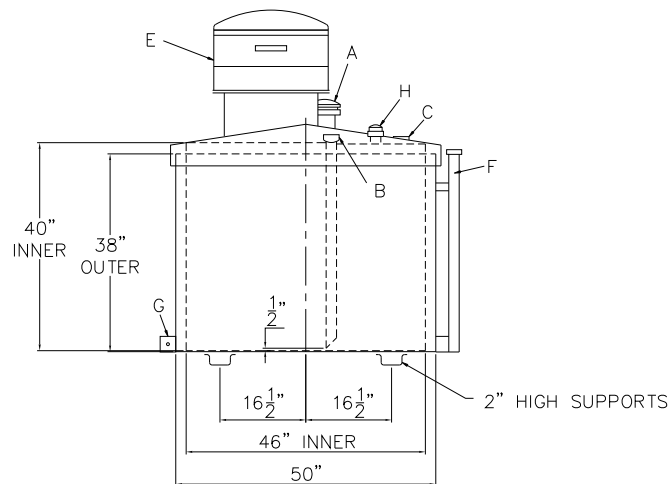
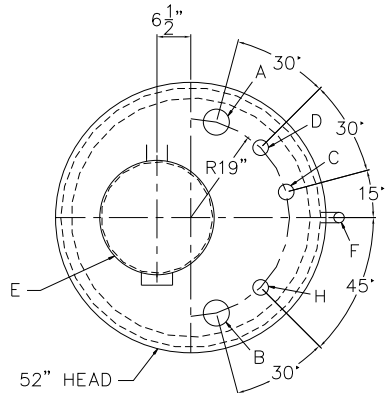


TOUCH UP OF FINISHED PAINT IS
REQUIRED BY INSTALLATION
CONTRACTOR. TOUCH UP PAINT SHIPPED
WITH TANK.



SPECIAL CHAMBER DETAIL

GENERAL NOTES:

PREPARE FLANGE ON BASE OF CHAMBER TO MATCH I.D.
OF 18" MANWAY AND STD 18" MANWAY BOLT
CIRCLE - ATTACH TO MANWAY USING REQUIRED
HARDWARE AND 1/8" THICK NEO-CORK GASKET

CAPACITY -285 GALLONS
NO. REQ. - -
OPERATING PRESSURE -ATMOSPHERIC
SPECIFIC GRAVITY = 1.0
MATERIAL - 12 GA MILD CARBON STEEL
TOP HEAD - 10 GA SHALLOW CONE OR STD. FLANGED & DISHD
CONSTRUCTION -LAP WELD OUTSIDE ONLY INNER TANK IS NOT ATTACHED TO OUTER TANK
TANK TEST -5 PSIG INNER TANK ONLY OUTER TUB - WATER TIGHT
PAINT- TUB - SHOP PRIMER TANK - SHOP PRIMER
SUPPORTS - 10 GA x 4" WIDE x 2" DEEP PRESS BROKE "U"
LABEL - UL 142 - APPLY LABEL ON TOP OF THE TANK

A	4"Ø HCPLG (EMERGENCY VENT USE)
B	2" HCPLG w/ 2" DROP PIPE & QUICK CONNECTION (SUCTION)
C	2" HCPLG (SPARE)
D	2" HCPLG (NORMAL VENT)
E	SPECIAL CHAMBER PER DETAIL
F	2" MONITORING TUBE
G	3" x 3" x 1/4" PLATE – GROUNDING LUG
H	2" HCPLG (GAUGE)



