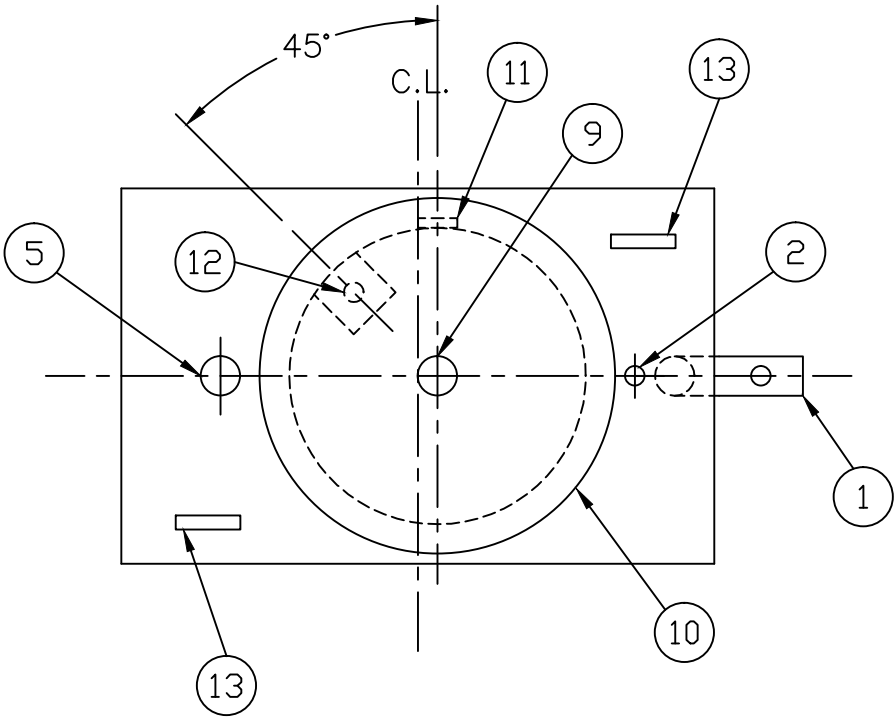


GENERAL SPECIFICATIONS

NO. REQ'D: (1)  
CAPACITY: 300 GALLON  
TYPE: SINGLE WALL, ABOVEGROUND  
MATERIAL: MILD CARBON STEEL  
GAUGE:  
SHELL- 12 GA.  
HEADS- 12 GA.

SURFACE PREP:  
SSPC-SP 6 BLAST EXTERIOR, SSPC-SP 10 BLAST INTERIOR  
COATING: MATERIAL / THICKNESS  
EXTERIOR- WHITE URETHANE (3-5 MILS)  
INTERIOR- HighDRO®-LINER PLUS POLYURETHANE (15 MILS)  
CONSTRUCTION : LAP FIT & WELD ALL EXTERIOR SEAMS  
OPERATING PRESSURE : ATMOSPHERIC  
ALL VENT PIPING BY INSTALLER  
LIFTING LUGS PLACED AS NEEDED PER FAB SHOP

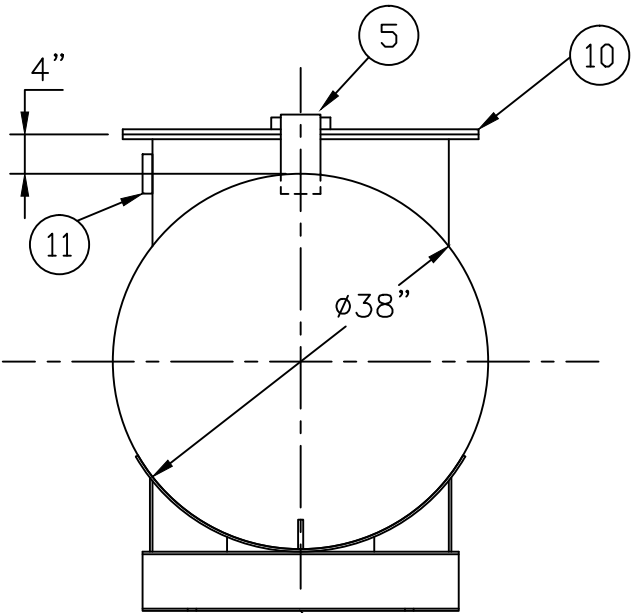


PROVIDED EQUIPMENT

- 1. 4"Ø PIPE STUB W/ 2" NPT FOR VENT (OVERFLOW SKIMMER)
- 2. 2"Ø FTG. FOR VENT
- 3. VELOCITY HEAD DIFFUSION BAFFLE (REMOVABLE)
- 4. WEAR PLATE
- 5. 4"Ø PIPE STUB (INLET)
- 6. UNDERFLOW BAFFLE
- 7. 2"Ø FULL CPLG. FOR PUMP MOUNTING
- 8. STRIKER PLATES
- 9. 4"Ø FTG. FOR GAUGE WITH PLUG
- 10. 30"Ø MANWAY
- 11. 4"Ø FTG. FOR PUMP & LEVEL SENSOR CONDUIT
- 12. 2"Ø FTG. W/ MOUNT FOR LEVEL SENSOR
- 13. LIFTING LUG
- 14. GROUNDING LUG

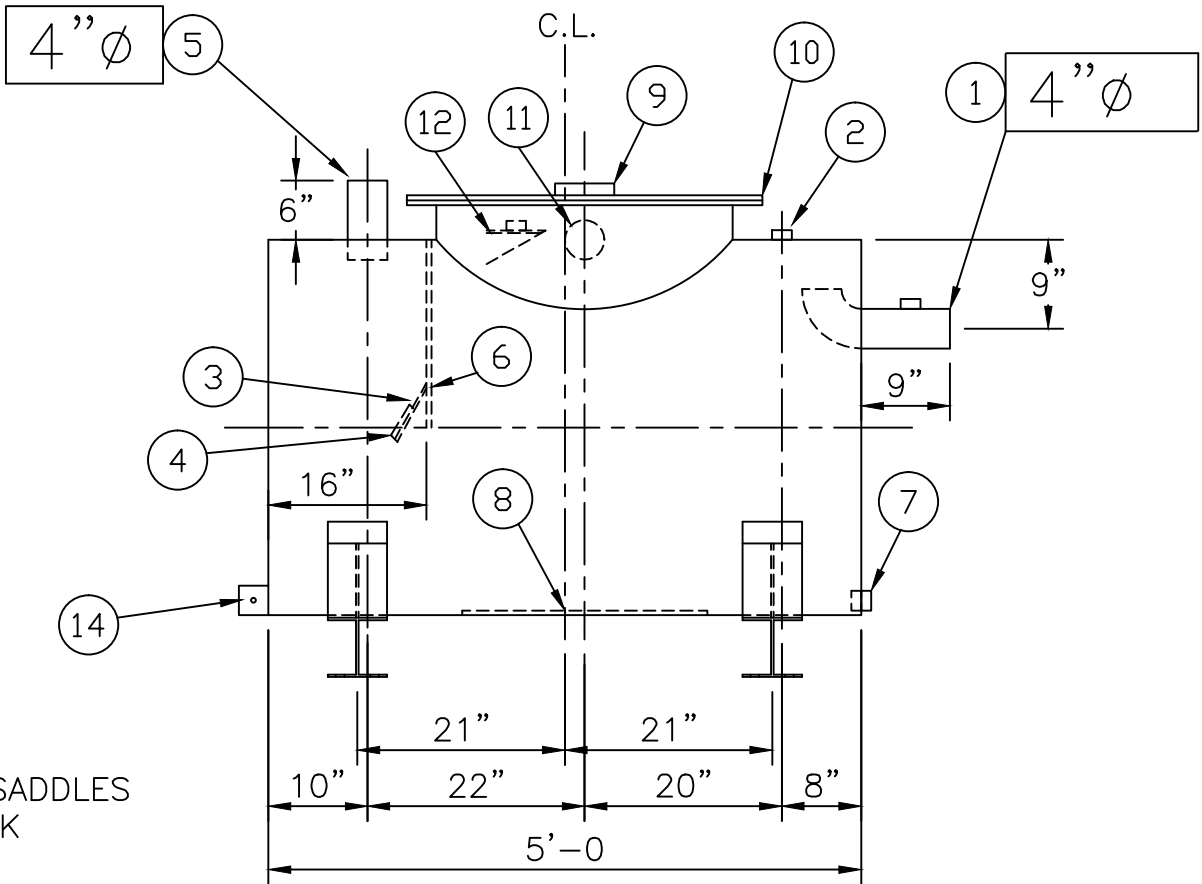
NOTE :  
ALL RIGHTS RESERVED. THIS DRAWING OR ANY PART THEREOF MUST NOT BE REPRODUCED IN ANY FORM WITHOUT THE WRITTEN PERMISSION OF HIGHLAND TANK.  
HIGHLAND TANK SHALL BE RESPONSIBLE ONLY FOR ITEMS INDICATED ON THIS FABRICATION DRAWING UNLESS OTHERWISE NOTED. CUSTOMER IS RESPONSIBLE FOR VERIFYING CORRECTNESS OF SIZE / LOCATION OF FITTINGS , ACCESSORIES & COATINGS SHOWN ON THIS DRAWING

PLAN



(2) 38"Ø x 6" HIGH SADDLES  
SHIP LOOSE WITH TANK

END VIEW



ELEVATION

**Highland Tank®**

HighDRO® WATER STORAGE TANKS  
300 GALLON RAINWATER COLLECTION TANK

CUSTOMER:

PROJECT:

QUOTE NO: 

CHK'D BY:

SCALE: DATE: DWG. BY: DWG. NO:

NTS 9/17/10 00300AHSWHDRC38