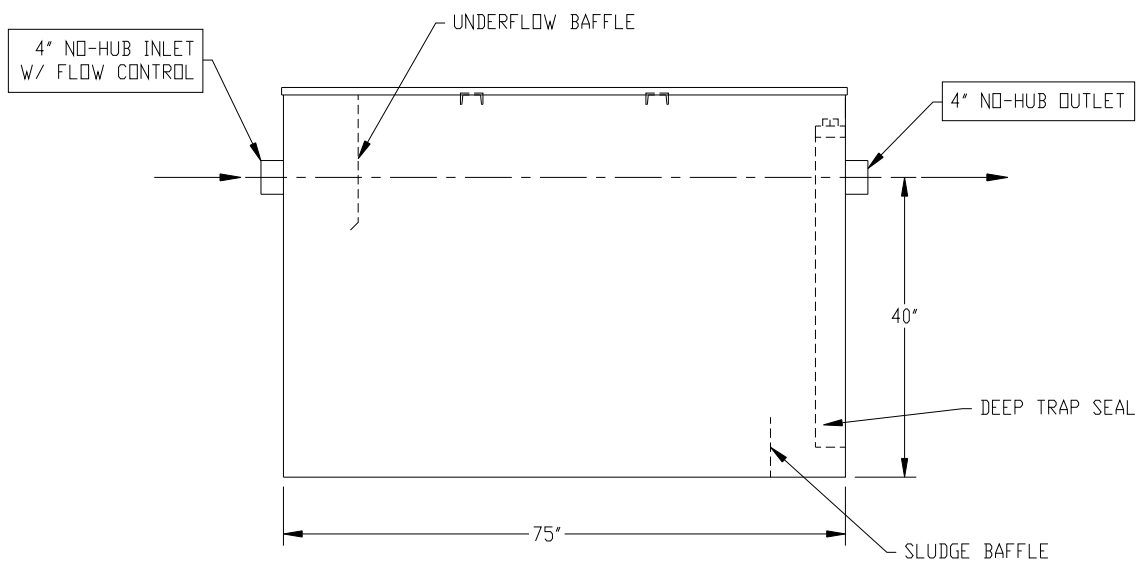
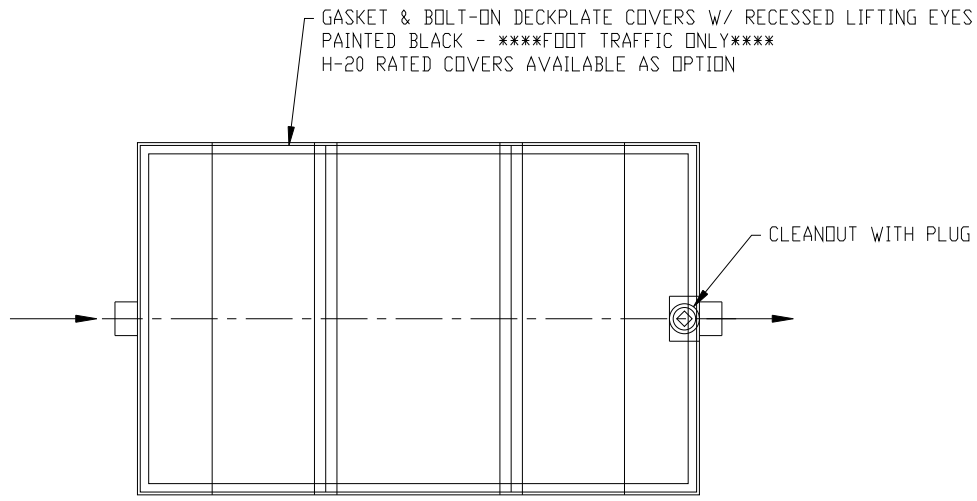
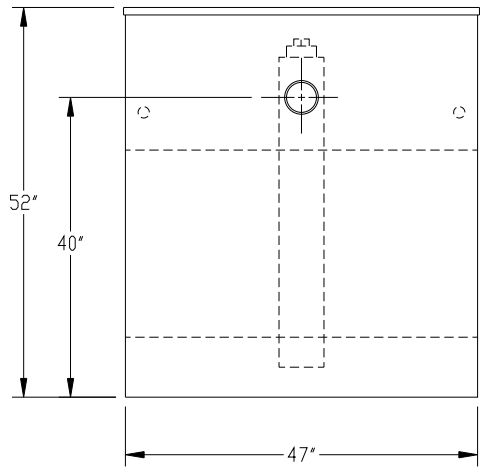


NOTE:
STANDARD TANK HEIGHT SHOWN
CUSTOMER TO VERIFY ACTUAL
HEIGHT REQUIRED



NOTE :
ALL RIGHTS RESERVED. THIS DRAWING OR ANY PART THEREOF MUST
NOT BE REPRODUCED IN ANY FORM WITHOUT THE WRITTEN PERMISSION
OF HIGHLAND TANK.
HIGHLAND TANK SHALL BE RESPONSIBLE ONLY FOR ITEMS INDICATED
ON THIS FABRICATION DRAWING UNLESS OTHERWISE NOTED. CUSTOMER
IS RESPONSIBLE FOR VERIFYING CORRECTNESS OF SIZE / LOCATION
OF FITTINGS , ACCESSORIES & COATINGS SHOWN ON THIS DRAWING

NOTE: ALL DIMENSIONS IN INCHES UNLESS NOTED OTHERWISE

GENERAL SPECIFICATIONS
NO. REQ'D:
MODEL: MGI-300 CS
MAXIMUM FLOW RATE: 300 GPM
MATERIAL: 10 GA CARBON STEEL
SURFACE PREP:
SSPC-SP 10 BLAST ALL SURFACES
INT. & EXT. COATING: POLYURETHANE
STATIC WATER CAPACITY: 580 GAL
GREASE HOLDING CAPACITY: 600 LBS
APPROX. DRY WEIGHT: 625 LBS

GENERAL NOTES
• ALL PLUMBING CONNECTIONS ARE
SUBJECT TO LOCAL CODES

REVISIONS			
		Highland Tank®	
MANUAL GREASE INTERCEPTOR MGI-300 CS			
CUSTOMER:			
PROJECT:			
QUOTE NO:		CHK'D BY:	
SCALE:	DATE:	DWG. BY:	
NTS	12/20/10	MGS	MGI-300 CS

DIMENSION TOLERANCE: ± 1"