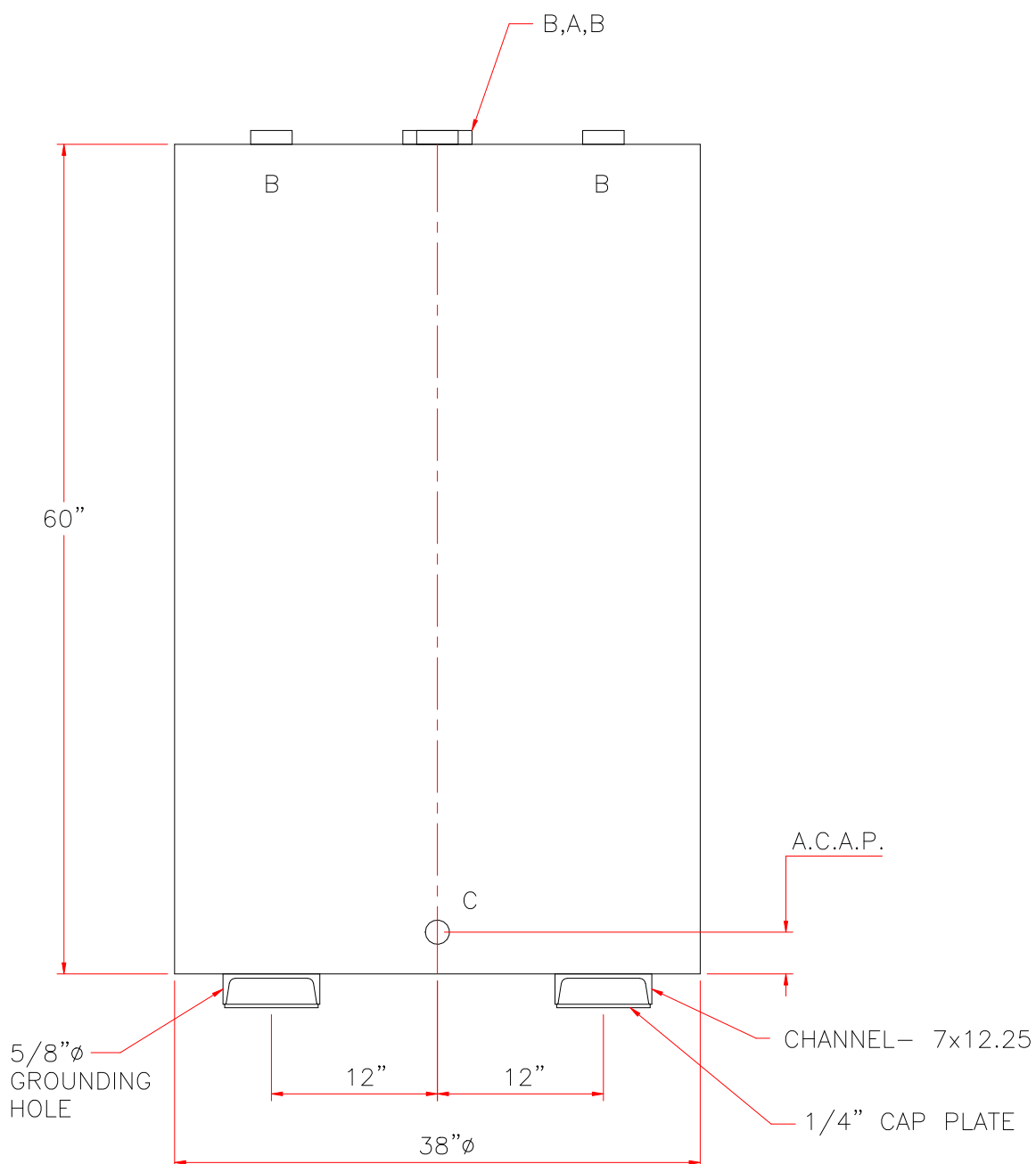
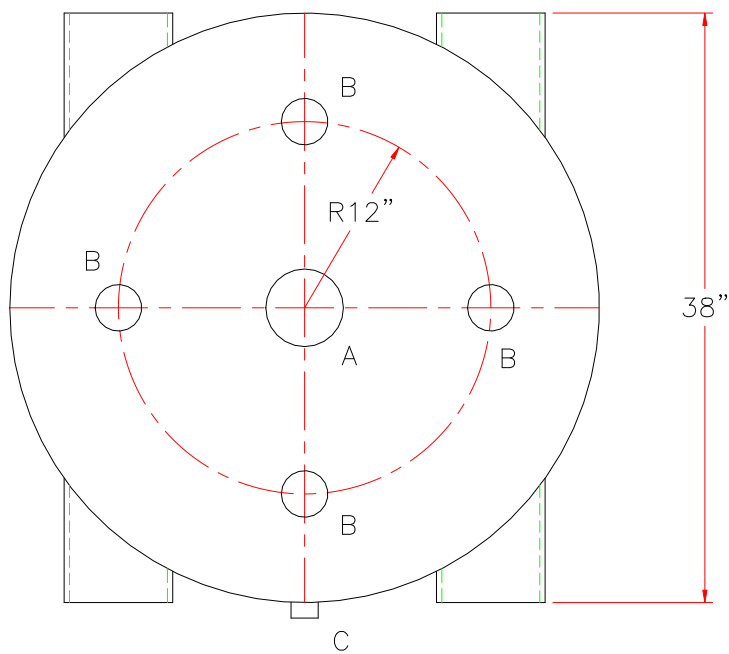


TOUCH UP OF FINISHED PAINT IS  
REQUIRED BY INSTALLATION  
CONTRACTOR. TOUCH UP PAINT SHIPPED  
WITH TANK.



- |  |
|--|
| <ol style="list-style-type: none"> <li>1. SEE PLAN VIEW FOR TRUE ORIENTATION AND LOCATION OF FITTING</li> <li>2. LIFTING LUGS FOR UNLOADING UNIT &amp; STANDING UNIT UPRIGHT TO BE PLACED AS NEEDED BY FABRICATION SHOP</li> </ol> |
|--|

<u>LEGEND</u>	
A	4" FNPT FITTING (PRIMARY VENT USE)
B	2" FNPT FITTING
C	3/4" FNPT FITTING
D	—
E	—
F	—

NOTES			
1. SEE PLAN VIEW FOR TRUE ORIENTATION AND LOCATION OF FITTING 2. LIFTING LUGS FOR UNLOADING UNIT & STANDING UNIT UPRIGHT TO BE PLACED AS NEEDED BY FABRICATION SHOP			
<span style="font-size: 2em; font-weight: bold; margin-left: 10px;">Highland Tank</span>			
UNLESS NOTED, TOLERANCES ARE $\pm 1"$			
<span style="font-size: 1.5em;">300 GAL 38"Ø BDV2 SW VERT. TANK</span>			
CUSTOMER:			
PROJECT:			
QUOTE NO:			CHK'D BY:
SCALE: 1"=1'-0"	DATE:	DWG. BY:	DWG. NO: 00300BDV2SW38