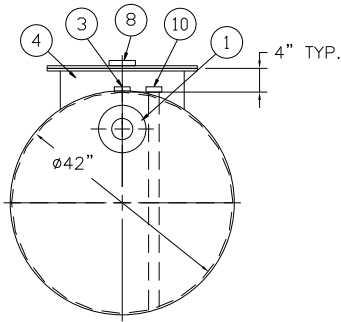


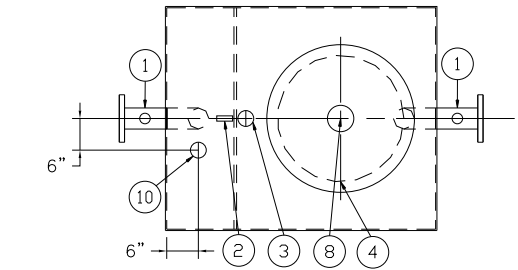
GENERAL SPECIFICATIONS

NO. REQ'D: (1)  
CAPACITY: 300 GALLONS  
TYPE: UNDERGROUND, DOUBLE WALL, HIGHGUARD  
SINGLE BASIN INTERCEPTOR TANK  
MATERIAL: MILD CARBON STEEL  
FLOW RATE: 30 GPM  
GAUGE: INNER OUTER  
SHELL- 7 GA. 10 GA.  
HEADS- 7 GA. 10 GA.  
SURFACE PREP:  
SSPC NO.6 BLAST ALL EXTERIOR SURFACES  
COATING: MATERIAL THICKNESS  
EXTERIOR- POLYURETHANE (75 MILS)  
INTERIOR- NONE  
OPERATING PRESSURE: ATMOSPHERIC

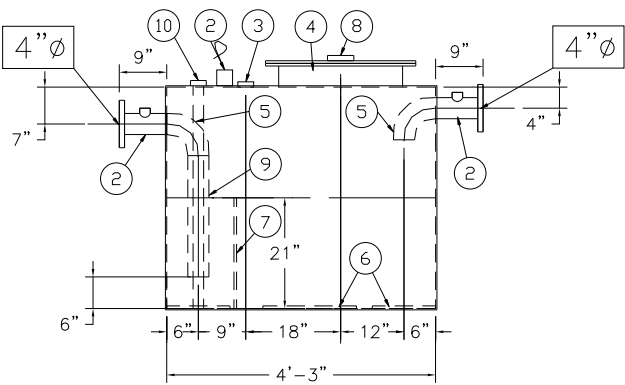
- NOTES:
- 1. POLYURETHANE HIGHGUARD TANK IS NOT APPROVED FOR THE STORAGE OF HEATED PRODUCTS
  - 2. TANK HAS 30 YEAR LIMITED WARRANTY
  - 3. 15000 VOLT SPARK TEST PROVIDED AT FACTORY
  - 4. ALL VENT PIPING BY INSTALLER
  - 5. BOLT ON EXTENSIONS NOT PROVIDED WITH STD. UNIT. CUSTOMER TO ADVISE IF EXT. ARE NEEDED & WHAT THEIR LENGTHS SHOULD BE



END VIEW



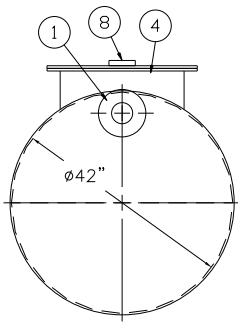
PLAN



ELEVATION

PROVIDED EQUIPMENT

- 1. 150# R.F.S.O. FLANGE W/ 2" Ø NPT FTG. FOR VENT
- 2. MONITOR LUG
- 3. 2" Ø NPT FTG. FOR VENT
- 4. 24" Ø MANHOLE
- 5. 4" Ø ELBOW
- 6. STRIKER PLATES
- 7. SLUDGE BAFFLE
- 8. 4" Ø NPT FTG. FOR GAUGE
- 9. DOWNCOMER PIPE
- 10. 2"Ø NPT FTG. FOR LEAK DETECTION



END VIEW

NOTE:  
HIGHLAND TANK & MFG. CO. SHALL BE RESPONSIBLE ONLY FOR ITEMS INDICATED ON THIS FABRICATION DRAWING. CONTRACTOR OR OTHERS SHALL BE RESPONSIBLE FOR ANY ITEMS NOT INDICATED ON DRAWING INCLUDING, BUT NOT LIMITED TO, INTERNAL / EXTERNAL PIPING- COATINGS-FITTINGS-ACCESSORIES, ETC. APPROVER OF DRAWING SHALL BE RESPONSIBLE FOR VERIFYING CORRECTNESS OF SIZE / LOCATION OF FITTINGS, ACCESSORIES, COATINGS, ETC. HIGHLAND TANK & MFG. CO. SHALL FABRICATE TANK IN ACCORDANCE TO THIS DRAWING (WHICH MAY OR MAY NOT BE IN EXACT ACCORDANCE TO PLANS & SPECIFICATIONS

REVISIONS			
<div><div><div>Highland Tank</div><div>MFG. CO.</div></div></div>			
300 GALLON SINGLE BASIN INTERCEPTOR DOUBLE WALL, HIGHGUARD			
CUSTOMER:			
PROJECT:			
QUOTE NO:			CHK'D BY:
SCALE: 1/2"=1'-0"	DATE: 8-12-05	DWG. BY:	DWG. NO.: 00300HGDWINTSB