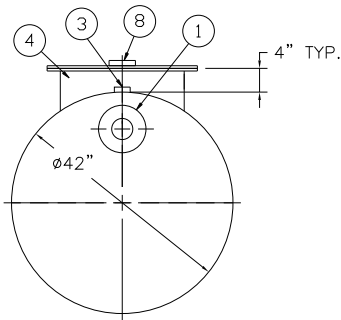


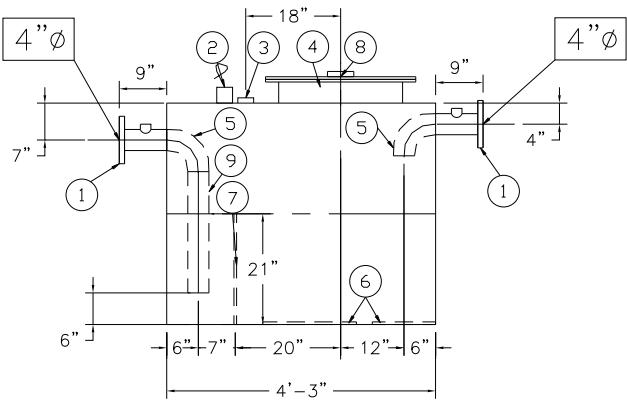
GENERAL SPECIFICATIONS

NO. REQ'D: (1)
CAPACITY: 300 GALLONS
TYPE: UNDERGROUND, SINGLE WALL, HIGHGUARD
SINGLE BASIN INTERCEPTOR TANK
MATERIAL: MILD CARBON STEEL
FLOW RATE: 30 GPM
GAUGE:
SHELL- 7 GA.
HEADS- 7 GA.
SURFACE PREP:
SSPC NO.6 BLAST ALL EXTERIOR SURFACES
COATING: MATERIAL THICKNESS
EXTERIOR- POLYURETHANE (75 MILS)
INTERIOR- NONE
OPERATING PRESSURE: ATMOSPHERIC

NOTES:
1. POLYURETHANE, HIGHGUARD TANK IS NOT APPROVED FOR THE STORAGE OF HEATED PRODUCTS
2. TANK HAS 30 YEAR LIMITED WARRANTY
3. 15000 VOLT SPARK TEST PROVIDED AT FACTORY
4. ALL VENT PIPING BY INSTALLER
5. BOLT ON EXTENSIONS NOT PROVIDED WITH STD. UNIT. CUSTOMER TO ADVISE IF EXT. ARE NEEDED & WHAT THEIR LENGTHS SHOULD BE



END VIEW

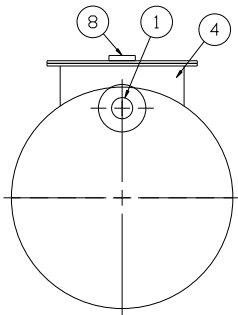


ELEVATION

NOTE:
HIGHLAND TANK & MFG. CO. SHALL BE RESPONSIBLE ONLY FOR ITEMS INDICATED ON THIS FABRICATION DRAWING. CONTRACTOR OR OTHERS SHALL BE RESPONSIBLE FOR ANY ITEMS NOT INDICATED ON DRAWING INCLUDING, BUT NOT LIMITED TO, INTERNAL / EXTERNAL PIPING- COATINGS- FITTINGS- ACCESSORIES, ETC. APPROVER OF DRAWING SHALL BE RESPONSIBLE FOR VERIFYING CORRECTNESS OF SIZE / LOCATION OF FITTINGS, ACCESSORIES, COATINGS, ETC. HIGHLAND TANK & MFG. CO. SHALL FABRICATE TANK IN ACCORDANCE TO THIS DRAWING (WHICH MAY OR MAY NOT BE IN EXACT ACCORDANCE TO PLANS & SPECIFICATIONS

PROVIDED EQUIPMENT

- 1. 150# R.F.S.O. FLANGE W/ 2" Ø NPT FTG. FOR VENT
- 2. MONITOR LUG
- 3. 2" Ø NPT FTG. FOR VENT
- 4. 24" Ø MANHOLE
- 5. 4" Ø ELBOW
- 6. STRIKER PLATES
- 7. SLUDGE BAFFLE
- 8. 4" Ø NPT FTG. FOR GAUGE
- 9. DOWNCOMER PIPE



END VIEW

REVISIONS			
		Highland Tank	
300 GALLON SINGLE BASIN INTERCEPTOR SINGLE WALL, HIGHGUARD			
CUSTOMER:			
PROJECT:			
QUOTE NO:		CHK'D BY:	
SCALE: 1/2"=1'-0"	DATE: 8-12-05	DWG. BY:	DWG. NO.: 00300HGSWINTSB