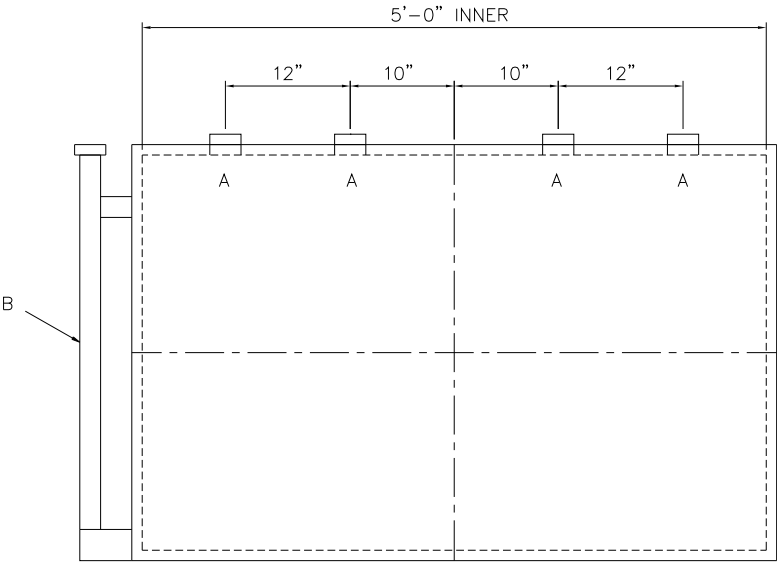
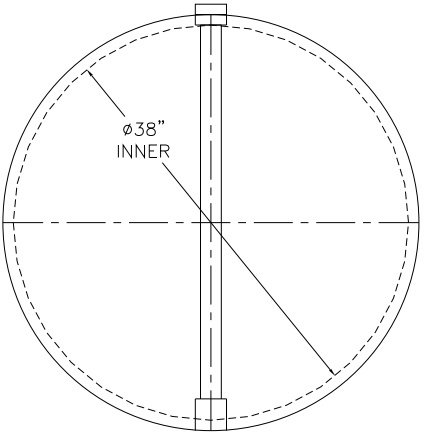


NOTE: ALL RIGHTS RESERVED. THIS DRAWING MUST NOT BE REPRODUCED IN ANY FORM WITHOUT THE WRITTEN PERMISSION OF HIGHLAND TANK®. HIGHLAND TANK® SHALL BE RESPONSIBLE ONLY FOR ITEMS INDICATED ON THIS FABRICATION DRAWING UNLESS OTHERWISE NOTED. CUSTOMER IS RESPONSIBLE FOR VERIFYING CORRECTNESS OF SIZE AND LOCATION OF FITTINGS, ACCESSORIES, AND COATINGS SHOWN ON THIS DRAWING.



DESIGN DATA
CAPACITY - 300 GALLONS
TYPE - DOUBLE WALL - TYPE I - 360°
NO. REQ. - -
OPERATING PRESSURE - ATMOSPHERIC
TANK MATERIAL -MILD CARBON STEEL
THICKNESS - INNER- HEADS: 10 GA SHELL: 10 GA
THICKNESS - OUTER- HEADS: 10 GA SHELL: 10 GA
CONSTRUCTION - INNER - LAP WELD OUTSIDE ONLY
OUTER - LAP WELD OUTSIDE ONLY
TANK TEST -INNER - 5 PSIG
OUTER - 2 PSIG AND FULL VACUUM
INT. FINISH - NONE
-
EXT. FINISH - SP6 BLAST, GREEN CHEMTHANE 2240
-
LABEL - UL 58

LEGEND	
A	2" FITTING
B	2" INTERSTITIAL MONITOR PIPE
C	-
D	-
E	-
F	-

△					
		Highland Tank®			
300 GAL 38"Ø DW HIGH-RES					
CUSTOMER:					
PROJECT:					
QUOTE NO:				CHK'D BY:	
SCALE: 1"=1'-0"		DATE:		DWG. BY:	
				DWG. NO: 00300HRDW48GA10	