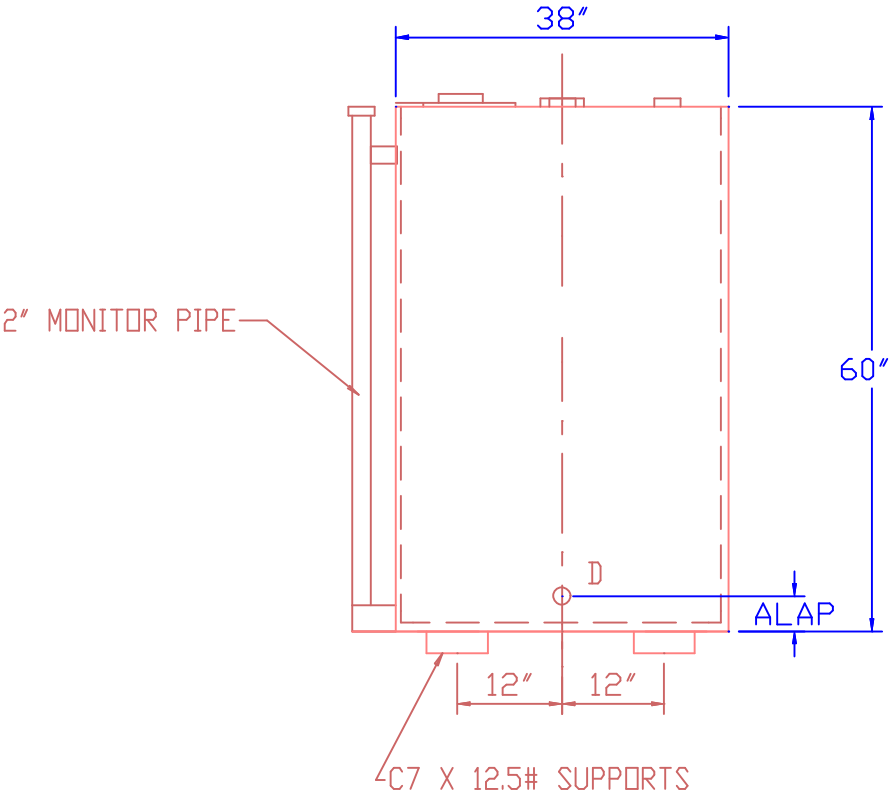
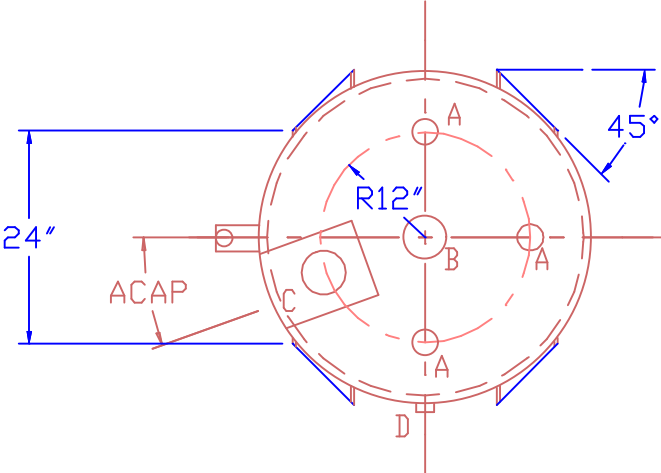


NOTE:  
ALL RIGHTS RESERVED, THIS DRAWING OR ANY PART THEREOF MUST NOT BE REPRODUCED IN ANY FORM WITHOUT THE WRITTEN PERMISSION OF HIGHLAND TANK  
HIGHLAND TANK SHALL BE RESPONSIBLE ONLY FOR ITEMS INDICATED ON THIS FABRICATION DRAWING UNLESS OTHERWISE NOTED. CUSTOMER IS RESPONSIBLE FOR VERIFYING CORRECTNESS OF SIZE / LOCATION OF FITTINGS, ACCESSORIES & COATINGS SHOWN ON THIS DRAWING



CAP - 300 GAL  
MAT'L - MILD CARBON STEEL

	INNER	OUTER
THICKNESS- TOP-	12 GA	FLAT FLANGED
BOTTOM-	12 GA	10 GA
SHELL-	12 GA	10 GA

CONSTR - LAP WELD OUTSIDE ONLY

TEST - 2 PSIG

PAINT - INT - 5 WT OIL SLURRY

EXT - RED PRIMER

LABEL - UL 142

- A 2" FITTING W/ THREADED PLASTIC PLUG
- B 4" FITTING W/ THREADED PLASTIC PLUG
- C 4" SECONDARY EMERGENCY VENT FITTING MOUNTED IN INTERSTICE EXTENSION BOX W/ THREADED PLASTIC PLUG
- D 1/2" FITTING W/ STEEL PLUG

NOTE:  
TANK INTERIOR MUST BE CLEAN, DRY, AND DEBRIS FREE

1	CHANGED SUPPORTS	08-16-99	008
 Highland Tank			
300 GAL 38"Ø D.W. LUBE BDV2			
CUSTOMER: NAME			
PROJECT: ?			
QUOTE NO: #			
SCALE 1/2" = 1'-0"	DATE 07/30/99	DRAWN BY 009	CHK'D BY
		DWG NO LBDV2300DW	