

GENERAL SPECIFICATIONS

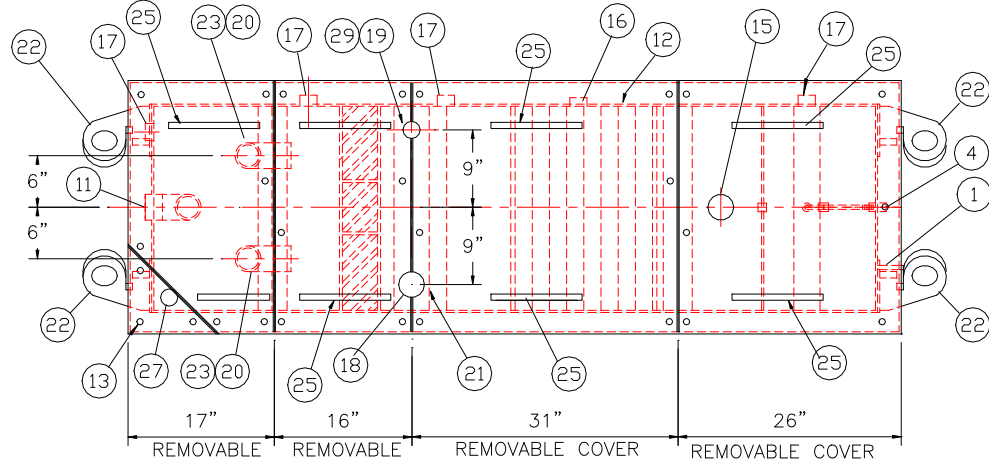
NO. REQ'D: (1)
 CAPACITY: 300 GALLONS
 TYPE: RECTANGULAR, HTC, ABOVEGROUND, SINGLE WALL
 MATERIAL: MILD CARBON STEEL
 FLOW RATE: 25 GPM
 GAUGE:
 SHELL - 7 GA
 HEADS - 7 GA
 SURFACE PREP:
 SSPC NO.10 BLAST ALL INTERIOR SURFACES
 SSPC NO.6 BLAST ALL EXTERIOR SURFACES
 COATING: MATERIAL THICKNESS
 EXTERIOR - CHEMPRIME 3001 (3-6 MILS)
 CHEMLINE 3300 (2-3 MILS)
 TOP COAT "WHITE"
 INTERIOR - CHEMLINE 4200 PW (15 MILS)
 CONSTRUCTION:
 BUTT FIT & WELD ALL CORNERS IN & OUT

NOTES

- ALL INTERNAL MATERIAL IS 10 GA
- ALL THREADED DRAIN FITTINGS TO HAVE STEEL THREADED PLUGS AND COATED WITH TANK
- ALL OTHER THREADED FITTINGS TO HAVE PVC THREADED PLUGS
- LIFTING LUGS HAVE REINFORCING PLATES

PROVIDED EQUIPMENT

- 3"x3"x1/4" FLAT W/ 9/16" HOLE DRILLED IN CENTER (GROUNDING LUG)
- SEDIMENT CHAMBER
- OIL WATER SEPARATOR CHAMBER
- FNPT THREADED INLET
- PVC INLET ELBOW PIPING
- VELOCITY HEAD DIFFUSION BAFFLE - 10GA
- WEAR PLATE - 1/4"
- REMOVABLE PARALLEL CORRUGATED PLATE COALESCER (CORELLA PVC PLATES) 1" PLATE SPACING
- SLUDGE BAFFLE - 10GA
- PVC OUTLET DOWNCOMER PIPE
- FNPT THREADED OUTLET
- (4) PIECE COVER W/ 5/8" BOLT HOLES - 10 GA
- NUTS & BOLTS W/ LARGE WING NUTS-TYP. (CORROSION RESISTANT)
- GASKET MATERIAL (FOR EACH REMOVABLE COVER)
- 3" FNPT (CLEAN-OUT)
- 2" FNPT (VENT)
- 2" FNPT HALF COUPLING (DRAIN) W/ STEEL PLUG (OIL PUMPOUT)
- 3" FNPT FULL COUPLING W/ 3" INTERNAL PVC PIPE (OIL PUMPOUT)
- 2" FNPT HALF COUPLING (INTERFACE LEVEL SENSOR)
- 3" 90° ELBOW W/ 2" HALF COUPLING ON TOP WITH PVC RISER PIPE
- 7 GA BRACING ACROSS TOP OF TANK W/ SENSOR & PUMP-OUT FITTINGS
- 1/2" THICK LIFTING LUG ANGLED TOWARD CENTER
- 3" FERNCO COUPLING
- 6" THICK REMOVABLE PETROSCREEN CARTRIDGE COALESCER
- HANDLES PER H.T. STANDARD
- 1" FNPT COUPLING W/ PLUG
- 2" FNPT HALF COUPLING (SPARE)
- PUMP CONTROL AND ALARM PANEL 120V/60HZ/1PH. SEE DSB DRAWING FOR MODEL #
- HTF-1 FLOAT INTERFACE SENSOR W/ NEMA 4 CAP

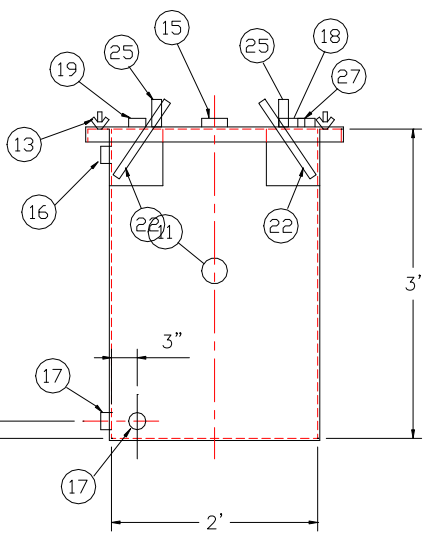


PLAN

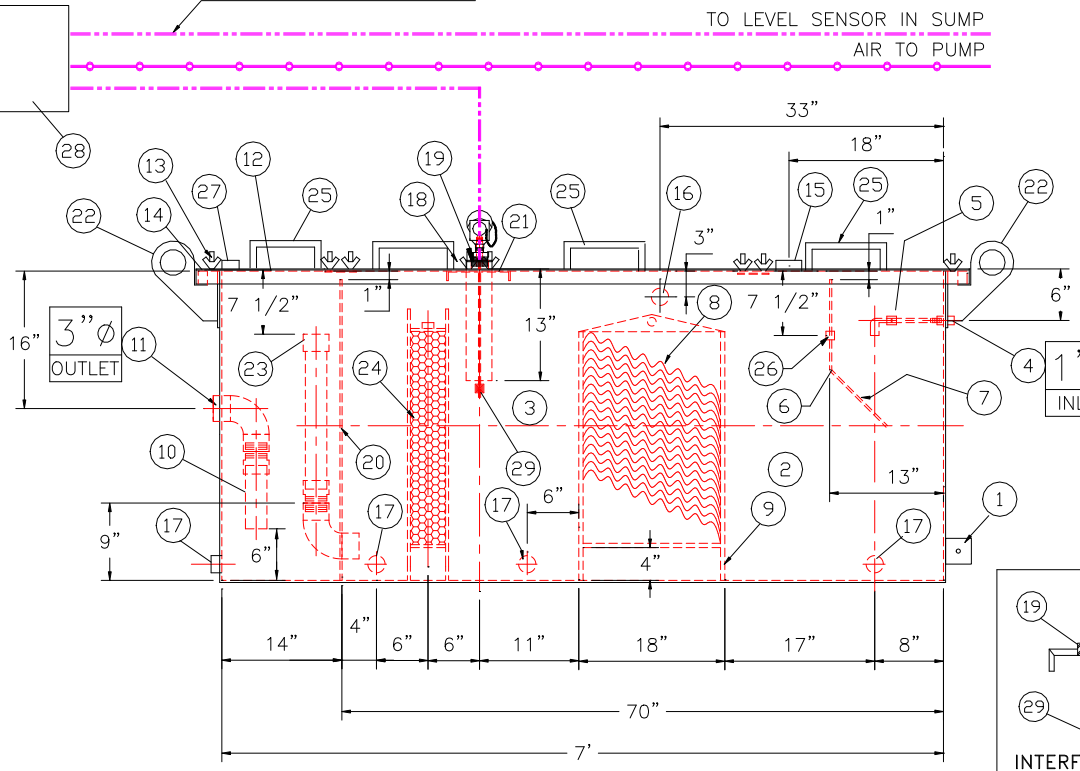
ALL CONDUIT, WIRING AND AIRLINES BY INSTALLER

120V POWER IN
 COMPRESSED AIR IN

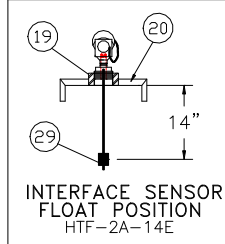
TO LEVEL SENSOR IN SUMP
 AIR TO PUMP



END VIEW



ELEVATION



INTERFACE SENSOR
 FLOAT POSITION
 HTF-2A-14E

NOTE:
 ALL RIGHTS RESERVED. THIS DRAWING OR ANY PART THEREOF MUST NOT BE REPRODUCED IN ANY FORM WITHOUT THE WRITTEN PERMISSION OF HIGHLAND TANK.
 HIGHLAND TANK SHALL BE RESPONSIBLE ONLY FOR ITEMS INDICATED ON THIS FABRICATION DRAWING UNLESS OTHERWISE NOTED. CUSTOMER IS RESPONSIBLE FOR VERIFYING CORRECTNESS OF SIZE / LOCATION OF FITTINGS, ACCESSORIES & COATINGS SHOWN ON THIS DRAWING

REVISIONS	
 Highland Tank U.S. Patent #4,722,800 Canadian Patent # 1,296,263	
300 GALLON OIL WATER SEPARATOR RECTANGULAR, HTC, SINGLE WALL	
CUSTOMER:	
PROJECT:	
QUOTE NO:	CHK'D BY:
SCALE: 3/4" = 1'-0"	DATE: 6-28-22
DWG. BY: REM	DWG. NO.: 00300DSBWS

FERNCO CONNECTION TO CONNECT PUMP & SUCTION LINE (AS CLOSE AS POSSIBLE TO PUMP CONNECTION)

WILDEN AIR DIAPHRAGM PUMP MODEL: XPS220/AAAAA/BNS/BN/ABN/0677/0248 WITH INLET AND DISCHARGE FACING AIR INLET
 THREE FLOAT LEVEL SENSOR MODEL: HTF-2C-48A-38A-31A
 CONTROL PANEL MODEL: S-115PC-ALRM 2-1/2"

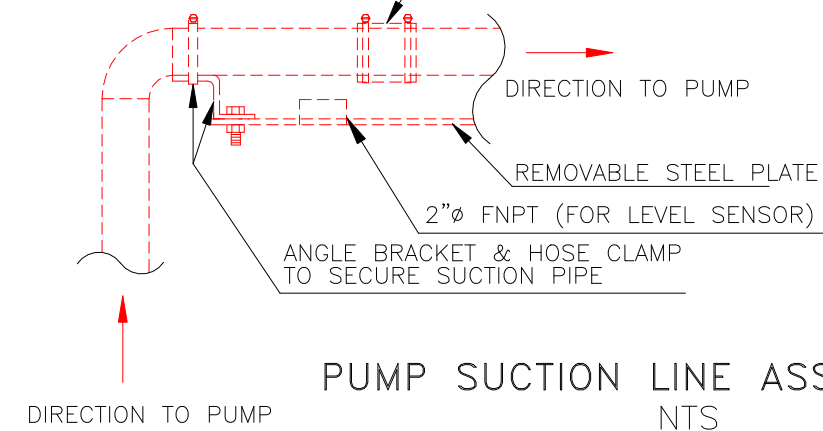
DRAWING 2 OF 2

GENERAL SPECIFICATIONS

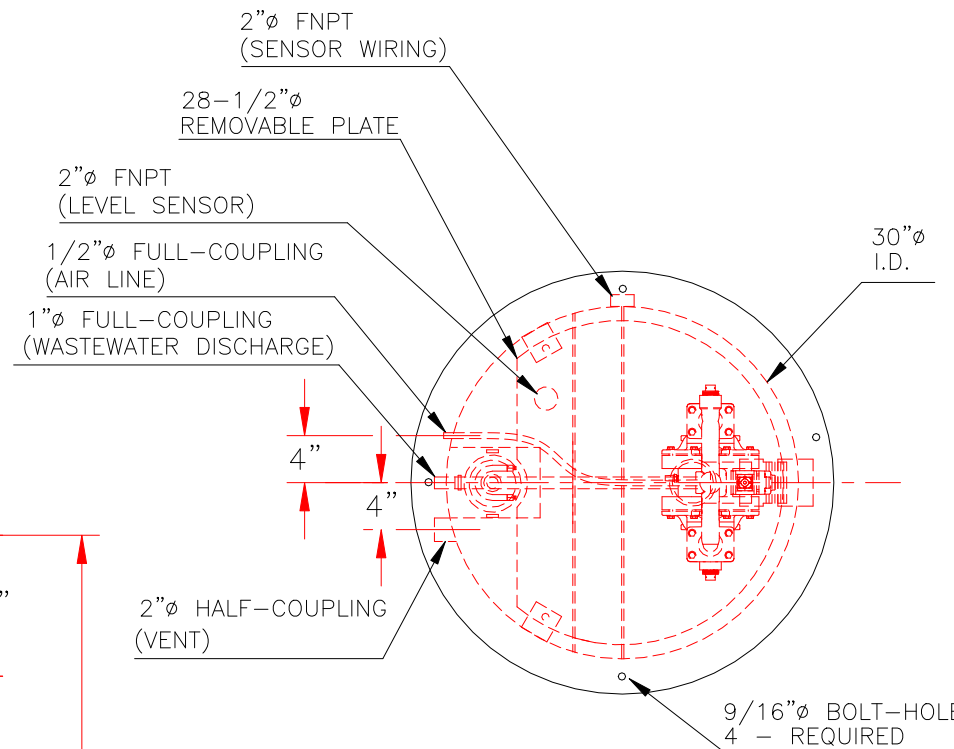
CAPACITY: 192 GALLONS
 MATERIAL: MILD CARBON STEEL
 GAUGE OR THICKNESS:
 SHELL- 7GA
 BOTTOM- 7GA
 BAFFLE- 7GA
 SURFACE PREP:
 SSPC NO. 10 BLAST ALL INTERIOR SURFACES
 SSPC NO. 6 BLAST ALL EXTERIOR SURFACES
 COATING:
 INTERIOR: POLYURETHANE (15 MILS)
 EXTERIOR: POLYURETHANE (15 MILS)
 FLOW RATE - 20 GPM

NOTES

1. SLUDGE BAFFLE MADE FROM 7GA.
2. AIR PRESSURE TO PUMP TO BE ADJUSTED TO ACHIEVE 20 GPM MAX FLOW RATE.

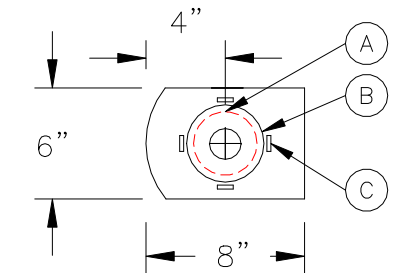


PUMP SUCTION LINE ASSEMBLY DETAIL
NTS

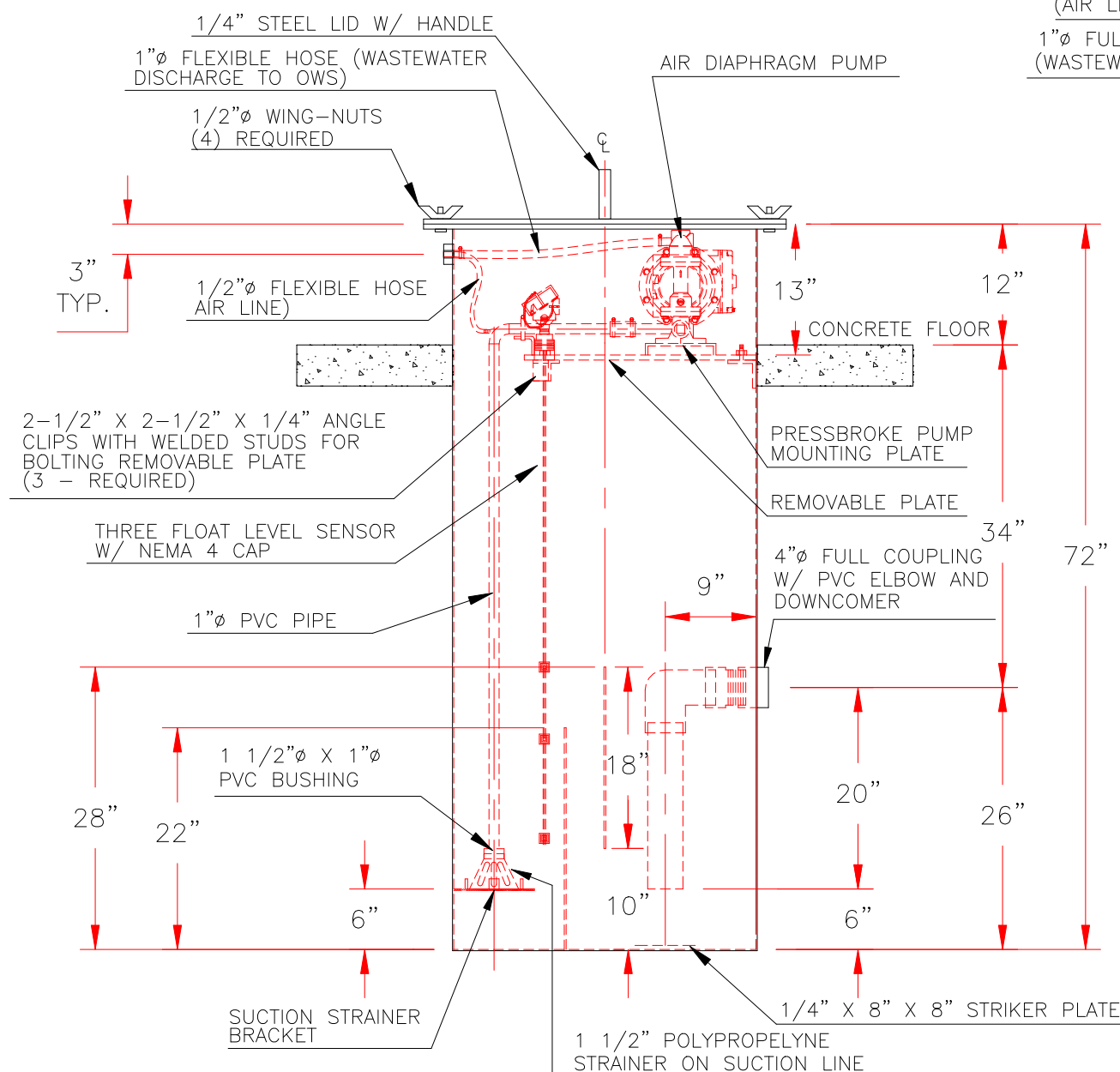


TOP VIEW

A= 4" DIA. THRU HOLE
 B= 4 7/8" O.D. STRAINER
 C= 1"x1" TABS ON 90° CENTERS ON 5 1/4" I.D. CIRCLE



STRAINER BRACKET DETAIL
NTS



ELEVATION VIEW

NOTE: ALL RIGHTS RESERVED. THIS DRAWING MUST NOT BE REPRODUCED IN ANY FORM WITHOUT THE WRITTEN PERMISSION OF HIGHLAND TANK. HIGHLAND TANK SHALL BE RESPONSIBLE ONLY FOR ITEMS INDICATED ON THIS FABRICATION DRAWING UNLESS OTHERWISE NOTED. CUSTOMER IS RESPONSIBLE FOR VERIFYING CORRECTNESS OF SIZE AND LOCATION OF FITTINGS, ACCESSORIES, AND COATINGS SHOWN ON THIS DRAWING.

SEE DWG: 00300DSBOWS FOR OWS DRAWING
 UNLESS OTHERWISE SPECIFIED DIMENSIONS ARE IN INCHES
 TOLERANCES ARE + OR - 1"



Highland Tank

UNLESS NOTED, TOLERANCES ARE +/- 1"

72" SUMP W/ INTERNAL PUMP

CUSTOMER:	CHK'D BY:
PROJECT:	QUOTE NO:
SCALE: 3/4"=1'-0"	DATE: 6-28-22
DWG. BY: REM	DWG. NO: 00300DSBSUMP