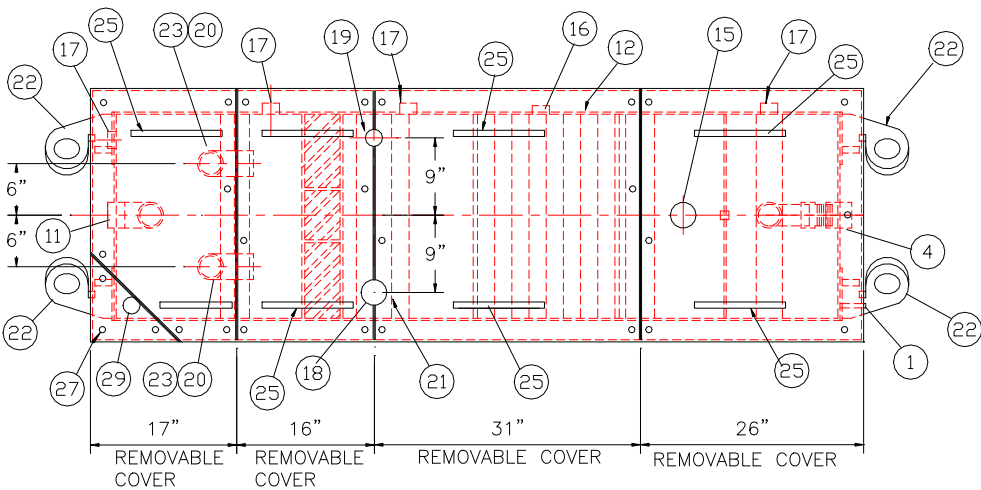


GENERAL SPECIFICATIONS

NO. REQ'D: (1)
CAPACITY: 300 GALLONS
TYPE: RECTANGULAR, HTC, ABOVEGROUND, SINGLE WALL
MATERIAL: MILD CARBON STEEL
FLOW RATE: 25 GPM
GAUGE:
SHELL- 7 GA
HEADS- 7 GA
SURFACE PREP:
SSPC NO.10 BLAST ALL INTERIOR SURFACES
SSPC NO.6 BLAST ALL EXTERIOR SURFACES
COATING: MATERIAL THICKNESS
EXTERIOR- CHEMPRIME 3001 (3-6 MILS)
CHEMLINE 3300 (2-3 MILS)
TOP COAT "WHITE"
INTERIOR- CHEMLINE 4200 PW (15 MILS)
CONSTRUCTION:
BUTT FIT & WELD ALL CORNERS IN & OUT

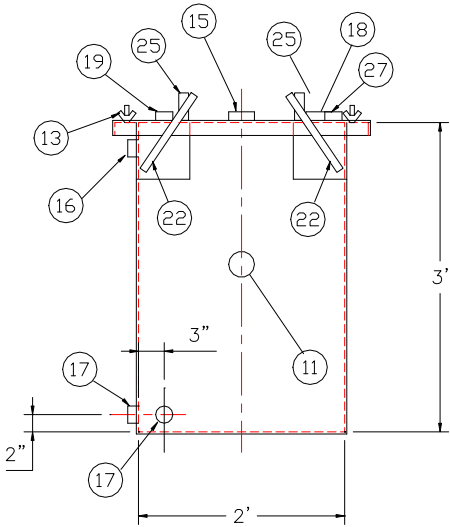
NOTES

- 1. ALL INTERNAL MATERIAL IS 10 GA
- 2. ALL THREADED DRAIN FITTINGS TO HAVE STEEL THREADED PLUGS AND COATED WITH TANK
- 3. ALL OTHER THREADED FITTINGS TO HAVE PVC THREADED PLUGS
- 4. LIFTING LUGS HAVE REINFORCING PLATES

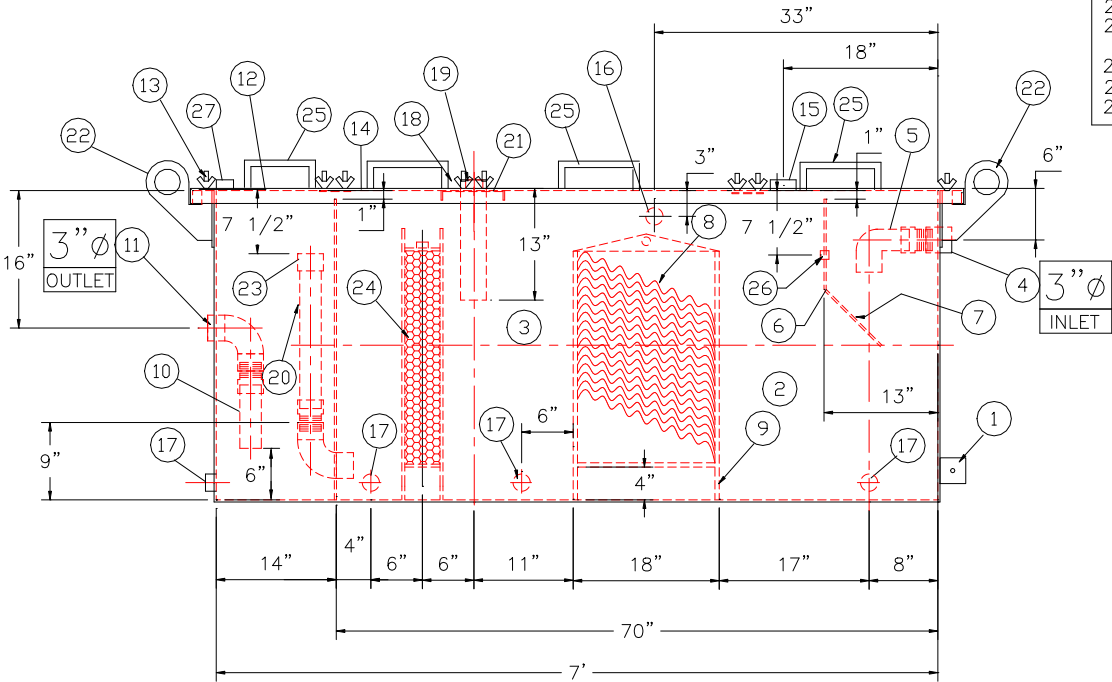


PLAN

- REQUIRED EQUIPMENT
- 1. 3"x3"x1/4" FLAT W/ 9/16"Ø HOLE DRILLED IN CENTER (GROUNDING LUG)
 - 2. SEDIMENT CHAMBER
 - 3. OIL WATER SEPARATOR CHAMBER
 - 4. FNPT THREADED INLET
 - 5. PVC INLET ELBOW PIPING
 - 6. VELOCITY HEAD DIFFUSION BAFFLE - 10GA
 - 7. WEAR PLATE - 1/4"
 - 8. REMOVABLE PARALLEL CORRUGATED PLATE COALESCER. CORELLA PVC PLATES (1" PLATE SPACING)
 - 9. SLUDGE BAFFLE - 10GA
 - 10. PVC OUTLET DOWNCOMER PIPE
 - 11. FNPT THREADED OUTLET
 - 12. (4) PIECE COVER W/ 5/8" BOLT HOLES - 10 GA
 - 13. NUTS & BOLTS W/ LARGE WING NUTS-TYP. (CORROSION RESISTANT)
 - 14. GASKET MATERIAL (FOR EACH REMOVABLE COVER)
 - 15. 3"Ø FNPT (CLEAN-OUT)
 - 16. 2"Ø FNPT (VENT)
 - 17. 2"Ø FNPT HALF COUPLING (DRAIN) W/ STEEL PLUG
 - 18. 3"Ø FNPT FULL COUPLING W/ 3" Ø INTERNAL PVC PIPE (OIL PUMPOUT)
 - 19. 2"Ø FNPT HALF COUPLING (INTERFACE LEVEL SENSOR)
 - 20. 2"Ø 90 ° ELBOW W/ 2" HALF COUPLING ON TOP WITH PVC RISER PIPE
 - 21. 7 GA BRACING ACROSS TOP OF TANK W/ SENSOR & PUMP-OUT FITTINGS
 - 22. 1/2" THICK LIFTING LUG ANGLED TOWARD CENTER
 - 23. 2"Ø FERNCO COUPLING
 - 24. 6" THICK REMOVABLE PETROSCREEN CARTRIDGE COALESCER
 - 25. HANDLES PER H.T. STANDARD
 - 26. 1" Ø FNPT COUPLING W/ PLUG
 - 27. 2"Ø FNPT HALF COUPLING (SPARE)



END VIEW



ELEVATION

NOTE :
ALL RIGHTS RESERVED. THIS DRAWING OR ANY PART THEREOF MUST NOT BE REPRODUCED IN ANY FORM WITHOUT THE WRITTEN PERMISSION OF HIGHLAND TANK.
HIGHLAND TANK SHALL BE RESPONSIBLE ONLY FOR ITEMS INDICATED ON THIS FABRICATION DRAWING UNLESS OTHERWISE NOTED. CUSTOMER IS RESPONSIBLE FOR VERIFYING CORRECTNESS OF SIZE / LOCATION OF FITTINGS , ACCESSORIES & COATINGS SHOWN ON THIS DRAWING

UNLESS OTHERWISE SPECIFIED DIMENSIONS ARE IN INCHES
TOLERANCES ARE + OR - 1"


SCALE: 3/4" = 1'-0"

DATE:

DWG. BY:

DWG. NO.: 00300RECSWHTC

REVISIONS

 **Highland Tank**

U.S. Patent #4,722,800 Canadian Patent # 1,296,263

300 GALLON OIL WATER SEPARATOR
RECTANGULAR, HTC, SINGLE WALL

CUSTOMER:

PROJECT:

QUOTE NO:

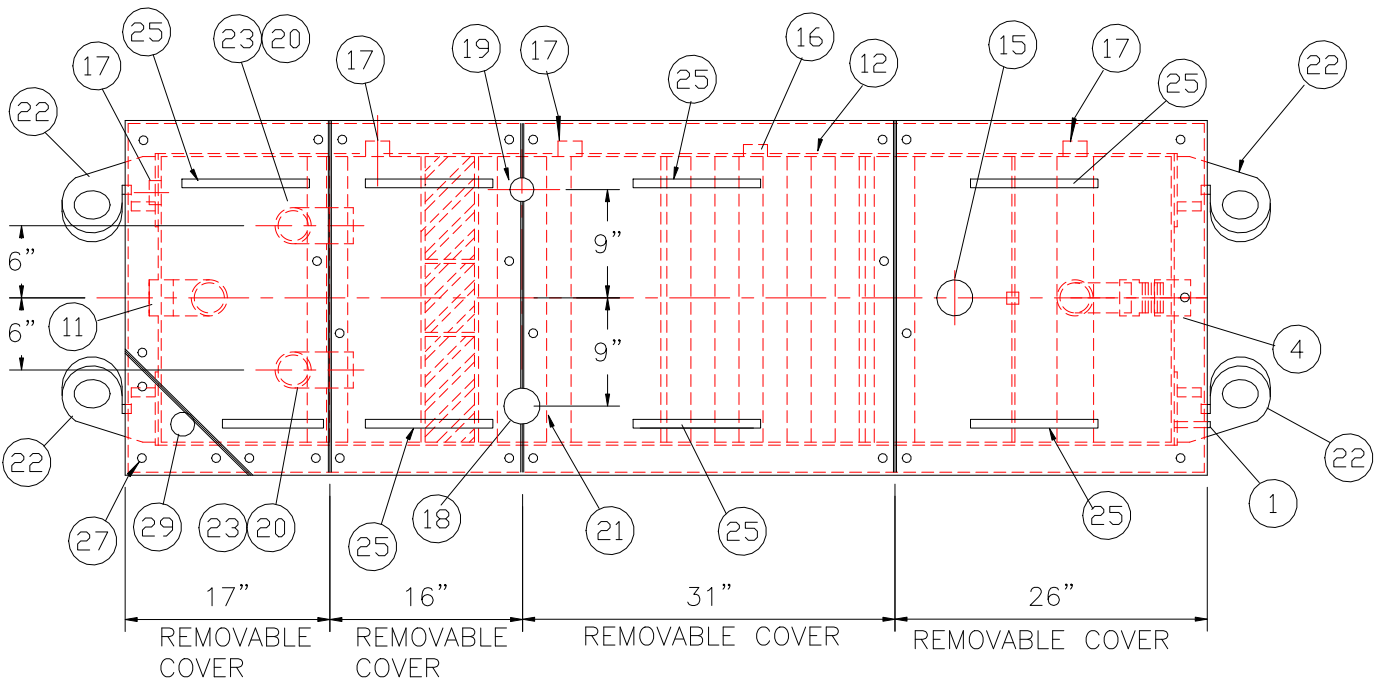
CHK'D BY:

GENERAL SPECIFICATIONS

NO. REQ'D: (1)
CAPACITY: 300 GALLONS
TYPE: RECTANGULAR, HTC, ABOVEGROUND, SINGLE WALL
MATERIAL: MILD CARBON STEEL
FLOW RATE: 25 GPM
GAUGE:
SHELL- 7 GA
HEADS- 7 GA
SURFACE PREP:
SSPC NO.10 BLAST ALL INTERIOR SURFACES
SSPC NO.6 BLAST ALL EXTERIOR SURFACES
COATING: MATERIAL THICKNESS
EXTERIOR- CHEMPRIME 3001 (3-6 MILS)
CHEMLINE 3300 (2-3 MILS)
TOP COAT "WHITE"
INTERIOR- CHEMLINE 4200 PW (15 MILS)
CONSTRUCTION:
BUTT FIT & WELD ALL CORNERS IN & OUT

NOTES

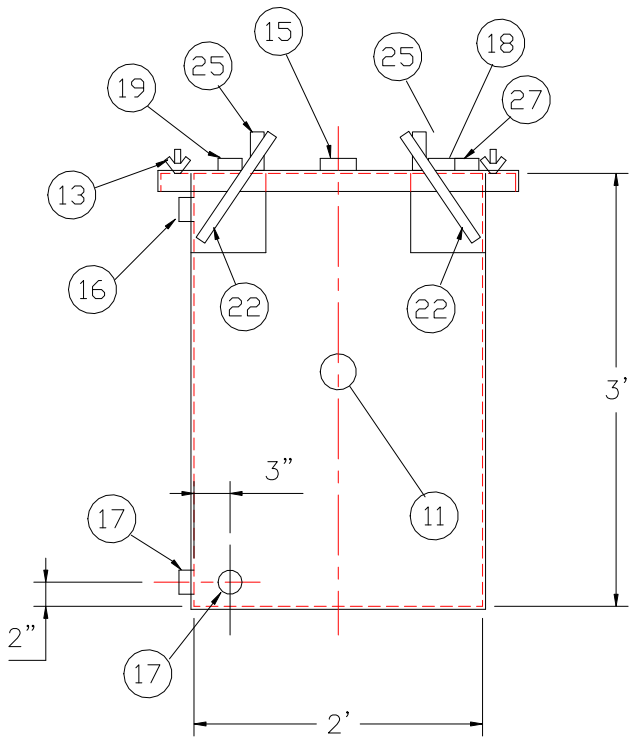
- 1. ALL INTERNAL MATERIAL IS 10 GA
- 2. ALL THREADED DRAIN FITTINGS TO HAVE STEEL THREADED PLUGS AND COATED WITH TANK
- 3. ALL OTHER THREADED FITTINGS TO HAVE PVC THREADED PLUGS
- 4. LIFTING LUGS HAVE REINFORCING PLATES



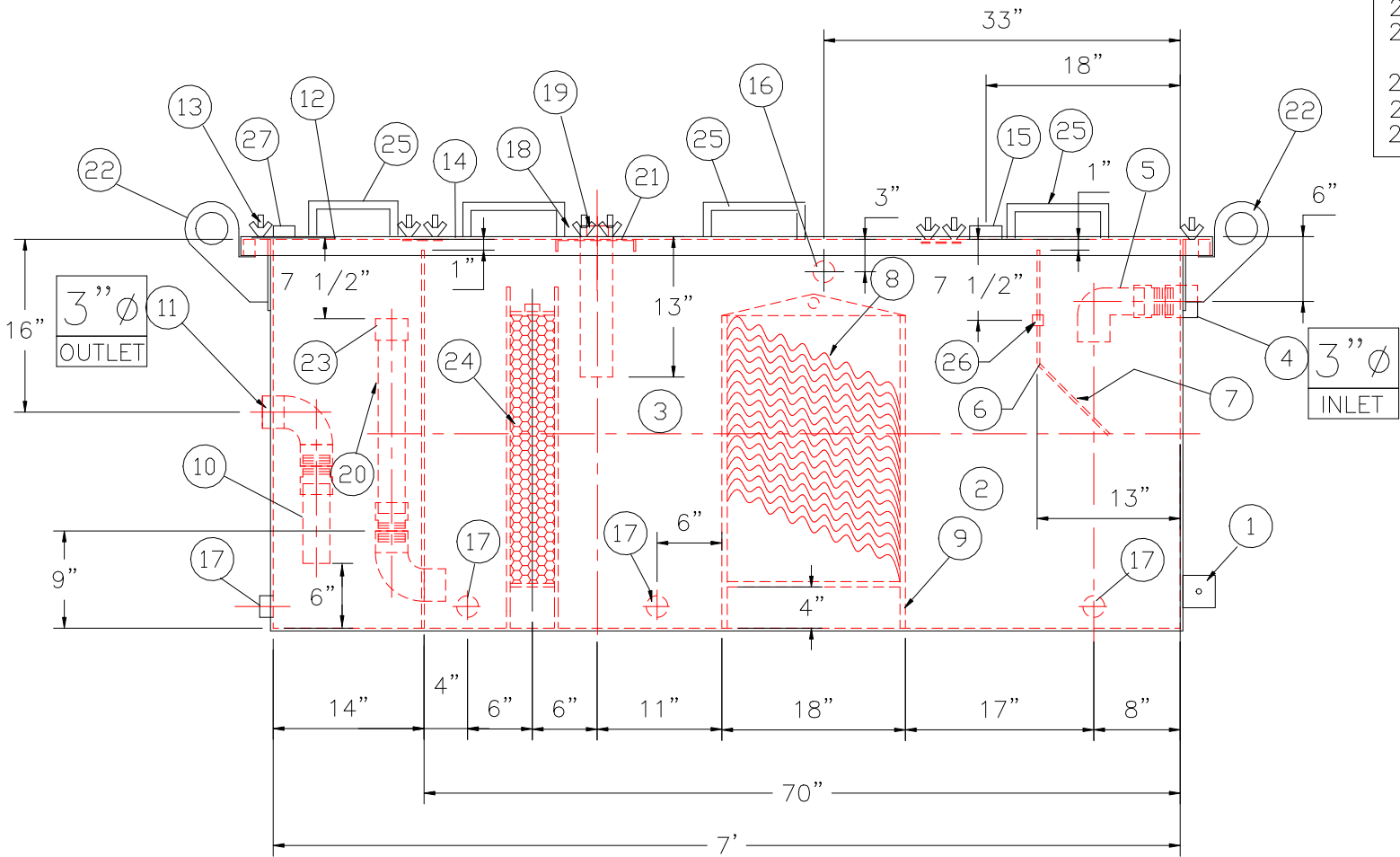
PLAN

PROVIDED EQUIPMENT

- 1. 3"x3"x1/4" FLAT W/ 9/16"Ø HOLE DRILLED IN CENTER (GROUNDING LUG)
- 2. SEDIMENT CHAMBER
- 3. OIL WATER SEPARATOR CHAMBER
- 4. FNPT THREADED INLET
- 5. PVC INLET ELBOW PIPING
- 6. VELOCITY HEAD DIFFUSION BAFFLE - 10GA
- 7. WEAR PLATE - 1/4"
- 8. REMOVABLE PARALLEL CORRUGATED PLATE COALESCER. CORELLA PVC PLATES (1" PLATE SPACING)
- 9. SLUDGE BAFFLE - 10GA
- 10. PVC OUTLET DOWNCOMER PIPE
- 11. FNPT THREADED OUTLET
- 12. (4) PIECE COVER W/ 5/8" BOLT HOLES - 10 GA
- 13. NUTS & BOLTS W/ LARGE WING NUTS-TYP. (CORROSION RESISTANT)
- 14. GASKET MATERIAL (FOR EACH REMOVABLE COVER)
- 15. 3"Ø FNPT (CLEAN-OUT)
- 16. 2"Ø FNPT (VENT)
- 17. 2"Ø FNPT HALF COUPLING (DRAIN) W/ STEEL PLUG
- 18. 3"Ø FNPT FULL COUPLING W/ 3" Ø INTERNAL PVC PIPE (OIL PUMPOUT)
- 19. 2"Ø FNPT HALF COUPLING (INTERFACE LEVEL SENSOR)
- 20. 2"Ø 90 ° ELBOW W/ 2" HALF COUPLING ON TOP WITH PVC RISER PIPE
- 21. 7 GA BRACING ACROSS TOP OF TANK W/ SENSOR & PUMP-OUT FITTINGS
- 22. 1/2" THICK LIFTING LUG ANGLED TOWARD CENTER
- 23. 2"Ø FERNCO COUPLING
- 24. 6" THICK REMOVABLE PETROSCREEN CARTRIDGE COALESCER
- 25. HANDLES PER H.T. STANDARD
- 26. 1" Ø FNPT COUPLING W/ PLUG
- 27. 2"Ø FNPT HALF COUPLING (SPARE)



END VIEW



ELEVATION

NOTE :
ALL RIGHTS RESERVED. THIS DRAWING OR ANY PART THEREOF MUST NOT BE REPRODUCED IN ANY FORM WITHOUT THE WRITTEN PERMISSION OF HIGHLAND TANK.
HIGHLAND TANK SHALL BE RESPONSIBLE ONLY FOR ITEMS INDICATED ON THIS FABRICATION DRAWING UNLESS OTHERWISE NOTED. CUSTOMER IS RESPONSIBLE FOR VERIFYING CORRECTNESS OF SIZE / LOCATION OF FITTINGS , ACCESSORIES & COATINGS SHOWN ON THIS DRAWING

UNLESS OTHERWISE SPECIFIED DIMENSIONS ARE IN INCHES TOLERANCES ARE + OR - 1"
SCALE: 3/4" = 1'-0"
DATE:
DWG. BY:
CHK'D BY:
DWG. NO.: 00300RECSWHTC

REVISIONS



Highland Tank

U.S. Patent #4,722,800 Canadian Patent # 1,296,263

300 GALLON OIL WATER SEPARATOR
RECTANGULAR, HTC, SINGLE WALL

CUSTOMER:

PROJECT:

QUOTE NO: