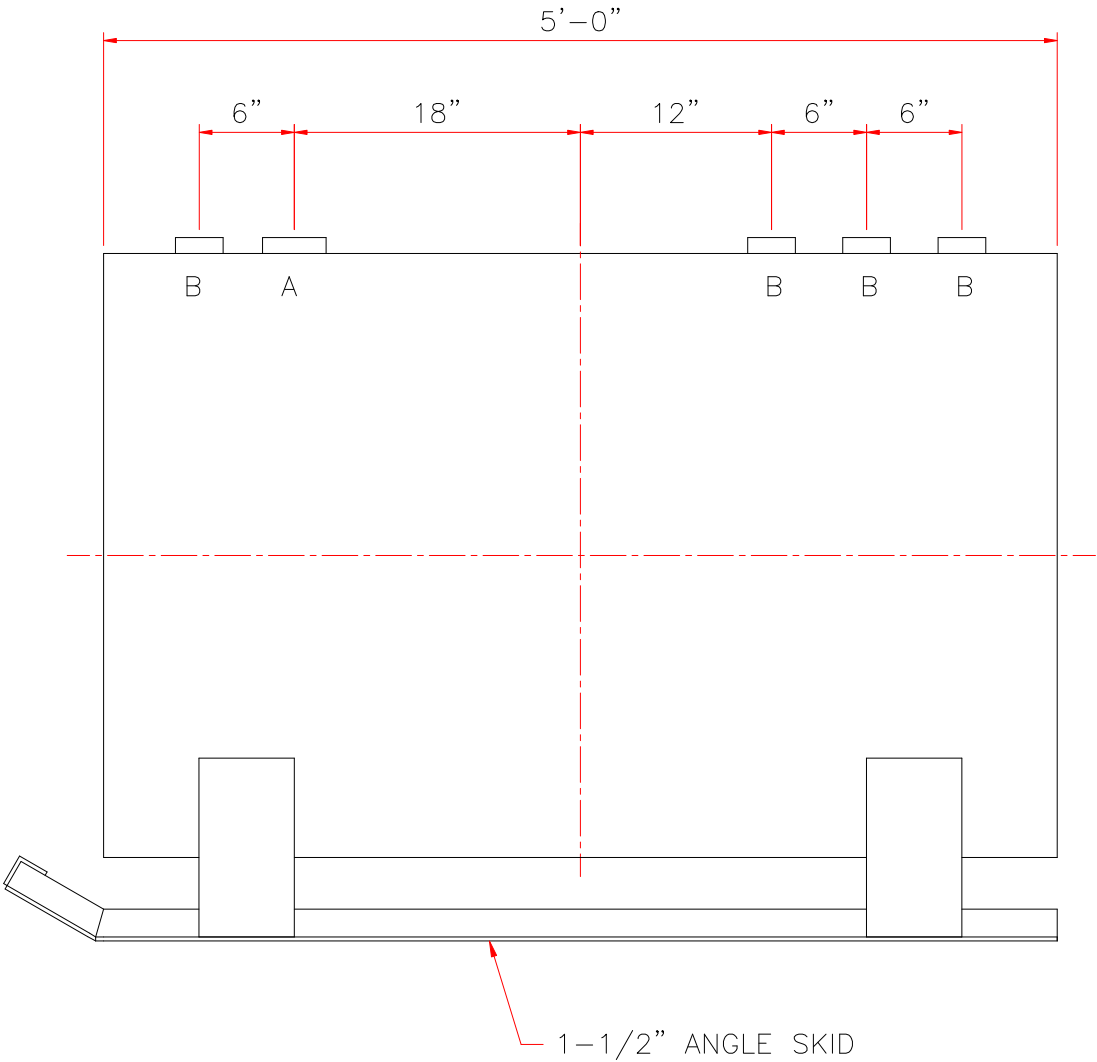
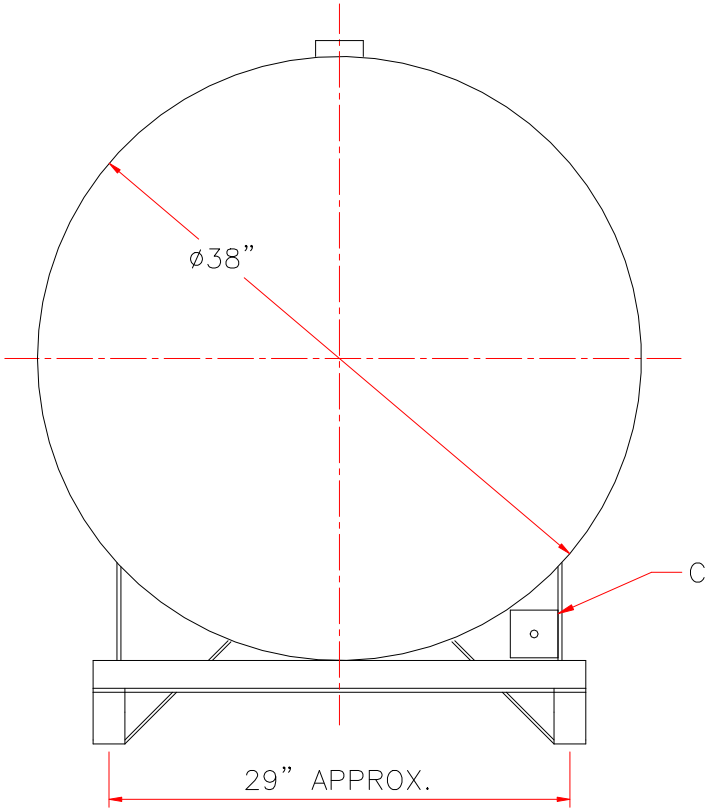


NOTE: ALL RIGHTS RESERVED. THIS DRAWING MUST NOT BE REPRODUCED IN ANY FORM WITHOUT THE WRITTEN PERMISSION OF HIGHLAND TANK®. HIGHLAND TANK® SHALL BE RESPONSIBLE ONLY FOR ITEMS INDICATED ON THIS FABRICATION DRAWING UNLESS OTHERWISE NOTED. CUSTOMER IS RESPONSIBLE FOR VERIFYING CORRECTNESS OF SIZE AND LOCATION OF FITTINGS, ACCESSORIES, AND COATINGS SHOWN ON THIS DRAWING.

TOUCH UP OF FINISHED PAINT IS REQUIRED BY INSTALLATION CONTRACTOR. TOUCH UP PAINT SHIPPED WITH TANK.



DESIGN DATA
CAPACITY – 300 GALLONS
TYPE – SINGLE WALL
NO. REQ. – –
OPERATING PRESSURE – ATMOSPHERIC
SPECIFIC GRAVITY = 1.0
TANK MATERIAL – MILD CARBON STEEL
THICKNESS – HEADS: 12 GAUGE
THICKNESS – SHELL: 12 GAUGE
CONSTRUCTION – LAP WELD OUTSIDE ONLY
TANK TEST – 5 PSIG
INT. FINISH – NONE
EXT. FINISH – SHOP PRIMER
LABEL – UL 142

LEGEND	
A	3” FITTING – EMERGENCY VENT USE
B	2” FITTING
C	3” x 3” PLATE w/ 1/2”ø (MIN.) HOLE ON CENTER (GROUNDING LUG–ONE REQ'D)
D	–
E	–
F	–

△

–

HIGHLAND

TANK

MFG. CO.

Highland Tank

UNLESS NOTED, TOLERANCES ARE +/- 1"

300 GAL 38”ø SW SKID TANK

CUSTOMER:

PROJECT:

QUOTE NO:

CHK'D BY:

SCALE: 1”=1’-0”

DATE:

DWG. BY:

DWG. NO: 00300SKSW3812GA