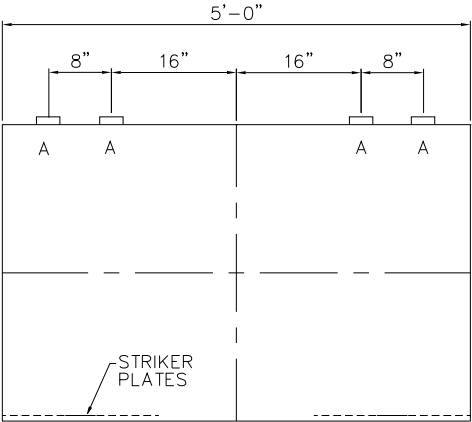
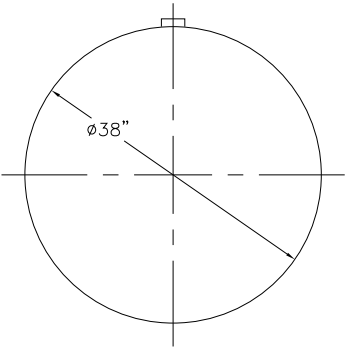


NOTE: ALL RIGHTS RESERVED. THIS DRAWING MUST NOT BE REPRODUCED IN ANY FORM WITHOUT THE WRITTEN PERMISSION OF HIGHLAND TANK®. HIGHLAND TANK® SHALL BE RESPONSIBLE ONLY FOR ITEMS INDICATED ON THIS FABRICATION DRAWING UNLESS OTHERWISE NOTED. CUSTOMER IS RESPONSIBLE FOR VERIFYING CORRECTNESS OF SIZE AND LOCATION OF FITTINGS, ACCESSORIES, AND COATINGS SHOWN ON THIS DRAWING.



DESIGN DATA
CAPACITY – 300 GALLONS
TYPE – SINGLE WALL, UNDERGROUND
NO. REQ. – –
OPERATING PRESSURE – ATMOSPHERIC
TANK MATERIAL –MILD CARBON STEEL
THICKNESS – HEADS: 10 GA
THICKNESS – SHELL: 10 GA
*GA THK. BASED ON 60” MAX. BURIAL DEPTH
CONSTRUCTION – LAP WELD OUTSIDE ONLY
–
TANK TEST – 5 PSIG
–
INT. FINISH – NONE
–
EXT. FINISH – BLACK COATING
–
LABEL – UL-58

LEGEND	
A	2” FITTING
B	–
C	–
D	–
E	–
F	–

SHOP TO INSTALL 1/4”x12”x12” STRIKER PLATES, ROLLED AND SEAL WELD TO THE TANK

△					
		<b>Highland Tank®</b>			
300 GAL 38” $\phi$ SW UNDERGROUND					
CUSTOMER:					
PROJECT:					
QUOTE NO:				CHK'D BY:	
SCALE:	DATE:	DWG. BY:	DWG. NO:		
3/4”=1'-0"			00300UGSW38GA10		

