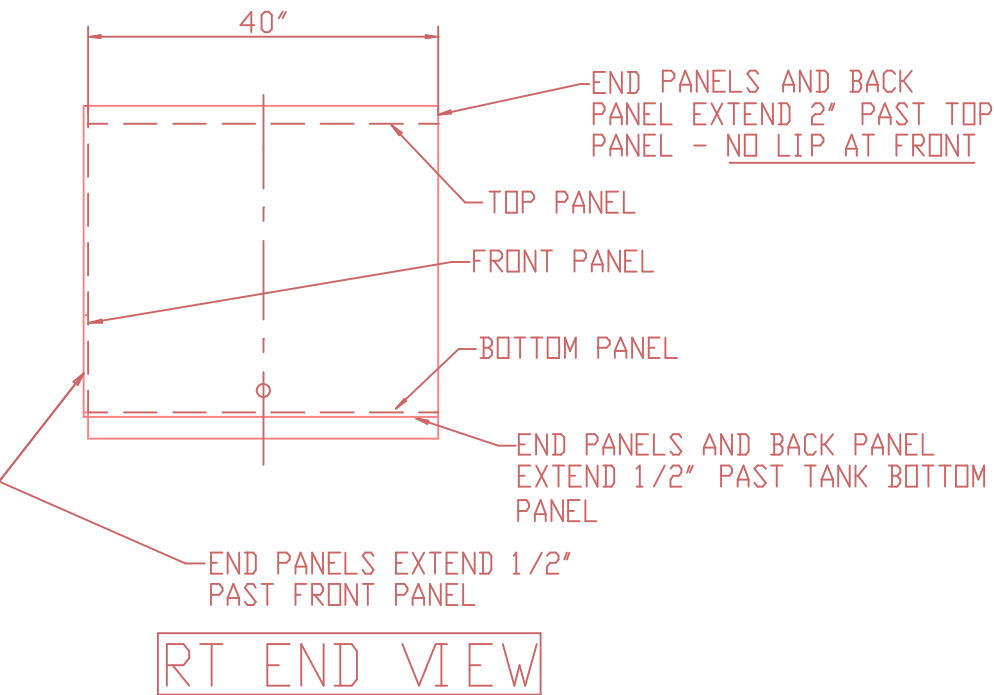
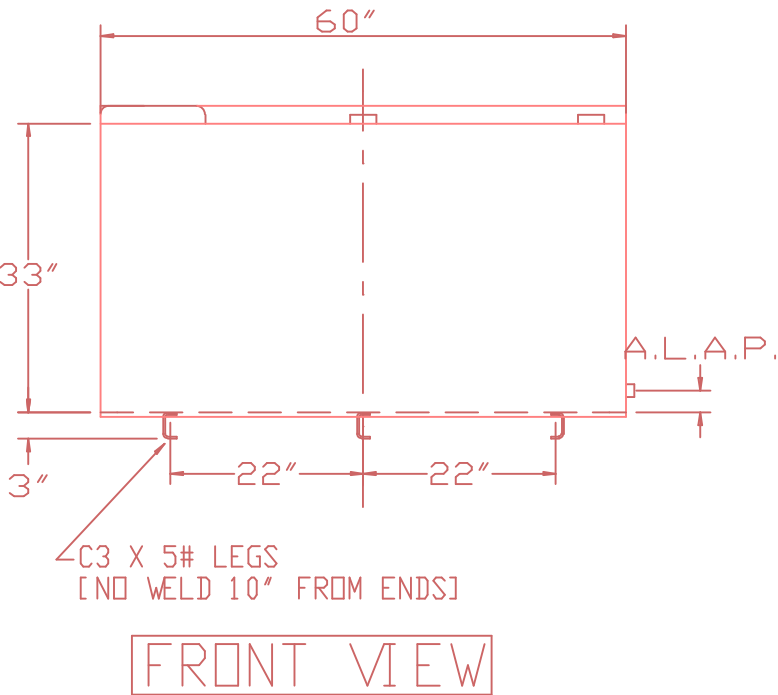
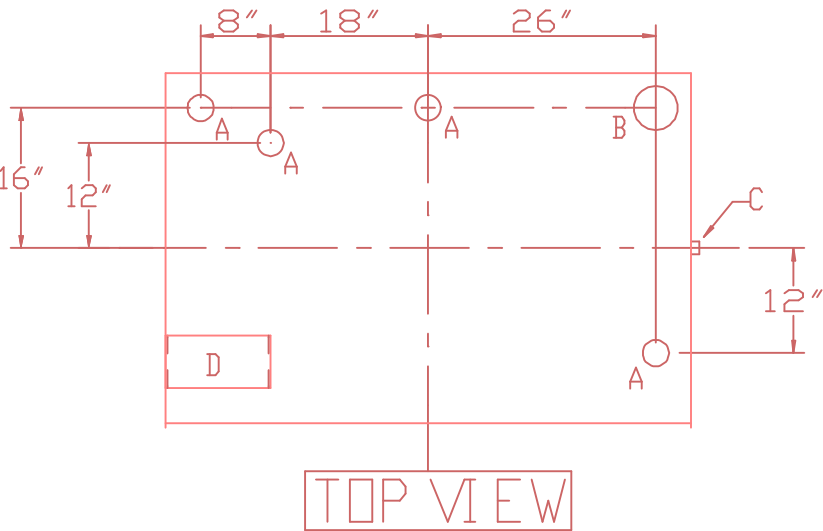


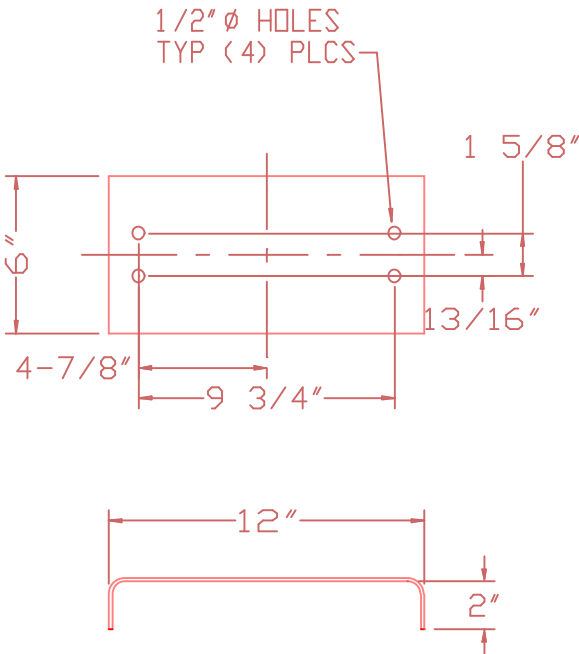
NOTE:  
ALL RIGHTS RESERVED, THIS DRAWING OR ANY PART THEREOF MUST NOT BE REPRODUCED IN ANY FORM WITHOUT THE WRITTEN PERMISSION OF HIGHLAND TANK  
HIGHLAND TANK SHALL BE RESPONSIBLE ONLY FOR ITEMS INDICATED ON THIS FABRICATION DRAWING UNLESS OTHERWISE NOTED. CUSTOMER IS RESPONSIBLE FOR VERIFYING CORRECTNESS OF SIZE / LOCATION OF FITTINGS, ACCESSORIES & COATINGS SHOWN ON THIS DRAWING



## NOZZLE SCHEDULE

- A 2" FITTING
- B 4" FITTING
- C 3/4" FITTING
- D MOUNT PER DETAIL

CAPACITY - 340 GAL  
MATERIAL - 12 GA MILD CARBON STEEL  
CONSTR - LAP WELD OUTSIDE ONLY  
PRESS BRAKE / DWG EBTPRESS  
TEST - 2 PSIG - (DESIGN PROOF HYDROTEST 15 PSIG )  
PAINT - INT - NONE  
EXT - SHOP PRIMER  
LABEL - UL 142



MATERIAL - 10 GA CARBON STEEL  
MOUNT DETAIL

<div><div></div></div>		-			-
<div><div><div>Highland TANK MFG CO.</div></div></div>		Highland Tank			
340 ECONOMY BENCH TOP TANK					
CUSTOMER: -					
PROJECT: -					
QUOTE NO: -					
SCALE 1/2" = 1' -0"		DATE 02/10/00		DRAWN BY 001	
				CHK' D BY	
				DWG NO EBT340	