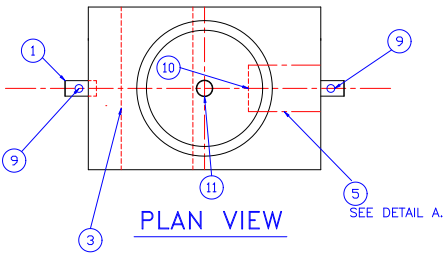


GENERAL SPECIFICATIONS

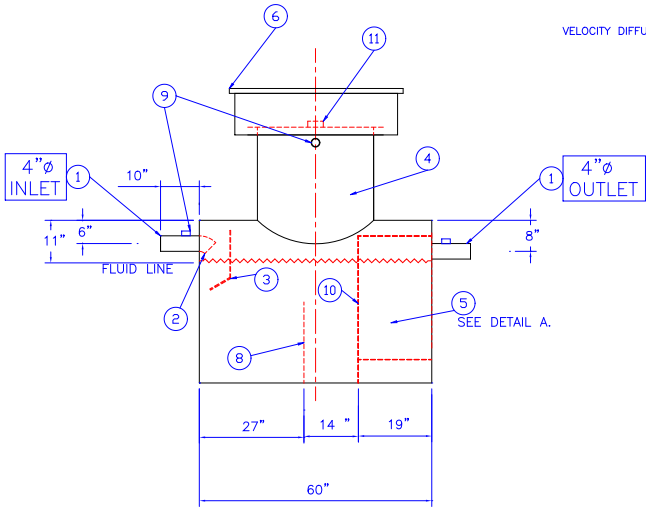
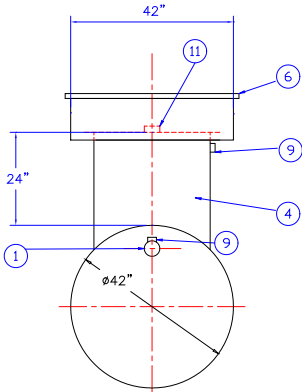
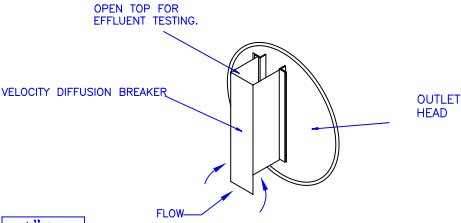
NO. REQ'D: (1)
CAPACITY: 300 GALLONS
TYPE: UNDERGROUND, SINGLE WALL, HIGHGUARD
DOUBLE-BASIN PASSIVE GREASE INTERCEPTOR TANK,
MATERIAL: MILD CARBON STEEL
GAUGE:
SHELL- 7GA
HEADS- 7GA
SURFACE PREP:
SSPC NO.6 BLAST ALL EXTERIOR SURFACES
SSPC NO.10 BLAST ALL INTERIOR SURFACES
COATING: MATERIAL THICKNESS
EXTERIOR- POLYURETHANE (75 MILS)
INTERIOR- POLYURETHANE (15 MILS)
OPERATING PRESSURE- ATMOSPHERIC




PROVIDED EQUIPMENT

- 1. 4"Ø PIPE STUB 6" LONG W/ 2"NPT FITTING
- 2. 4" Ø 45° WELD ELBOW
- 3. DIFFUSION BAFFLE W/ WEAR PLATE.
- 4. 30"Ø MANWAY RISER
- 5. OPEN TOP OUTLET BAFFLE FOR EFFLUENT TESTING. SEE DETAIL A.
- 6. 42"Ø H-20 RATED GRADE MANWAY (SHIPPED LOOSE)
- 7. STRIKER PLATE
- 8. SLUDGE BAFFLE (7GA.)
- 9. 2"Ø NPT FITTING FOR VENT.
- 10.VELOCITY DIFFUSION BREAKER
- 11. 4" NPT GAUGE FITTING

DETAIL A.



NOTE :
ALL RIGHTS RESERVED. THIS DRAWING OR ANY PART THEREOF MUST NOT BE REPRODUCED IN ANY FORM WITHOUT THE WRITTEN PERMISSION OF HIGHLAND TANK.
HIGHLAND TANK SHALL BE RESPONSIBLE ONLY FOR ITEMS INDICATED ON THIS FABRICATION DRAWING UNLESS OTHERWISE NOTED. CUSTOMER IS RESPONSIBLE FOR VERIFYING CORRECTNESS OF SIZE / LOCATION OF FITTINGS , ACCESSORIES & COATINGS SHOWN ON THIS DRAWING

REVISIONS				
 LOWE ENGINEERING CO. A HIGHLAND TANK COMPANY				
350 GALLON DOUBLE BASIN PASSIVE GREASE INTERCEPTOR				
CUSTOMER:				
PROJECT:				
QUOTE NO:				
SCALE:	DATE:	DWG. BY:	CHK'D BY:	DWG. NO.:
1/2"=1'-0"	01/31/06	CLD		00300DBS WPGJ