

NO. REQ'D: (1)  
CAPACITY: 350 GALLONS  
TYPE: HT, HIGHGUARD, DOUBLE WALL, "J" SERIES  
MATERIAL: MILD CARBON STEEL  
FLOW RATE: 35 GPM

NO. REQ'D: (1)  
CAPACITY: 350 GALLONS  
TYPE: HT, HIGHGUARD, DOUBLE WALL, "J" SERIES  
MATERIAL: MILD CARBON STEEL  
FLOW RATE: 35 GPM

GAUGE:	INNER	OUTER
SHELL—	7 GA.	10 GA.
HEADS—	7 GA.	10 GA.

SURFACE PREP:

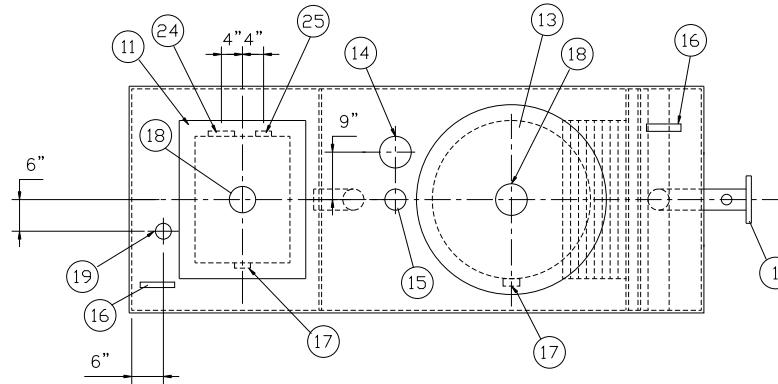
- SSPC NO.6 BLAST ALL EXTERIOR SURFACES
- SSPC NO.10 BLAST ALL INTERIOR SURFACES  
OF WATER CHAMBER ONLY

COATING:	MATERIAL	THICKNESS
EXTERIOR-	HIGHGUARD	(75 MILS)
INTERIOR-	POLYURETHANE	(15 MILS)
	INTERIOR OF WATER CHAMBER ONLY	

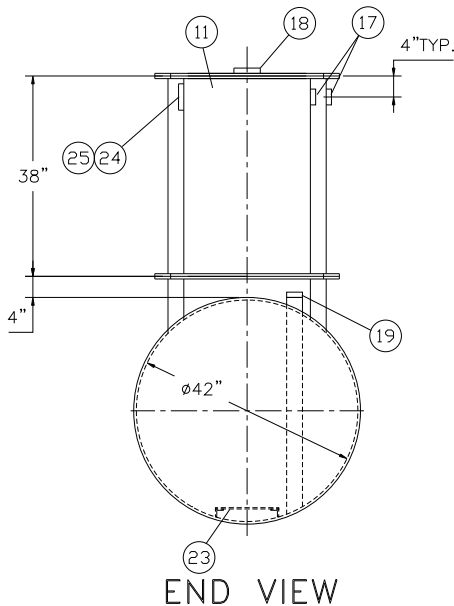
CONSTRUCTION : LAP FIT AND WELD ALL EXTERIOR SEAMS  
OPERATING PRESSURE: ATMOSPHERIC

NOTES:

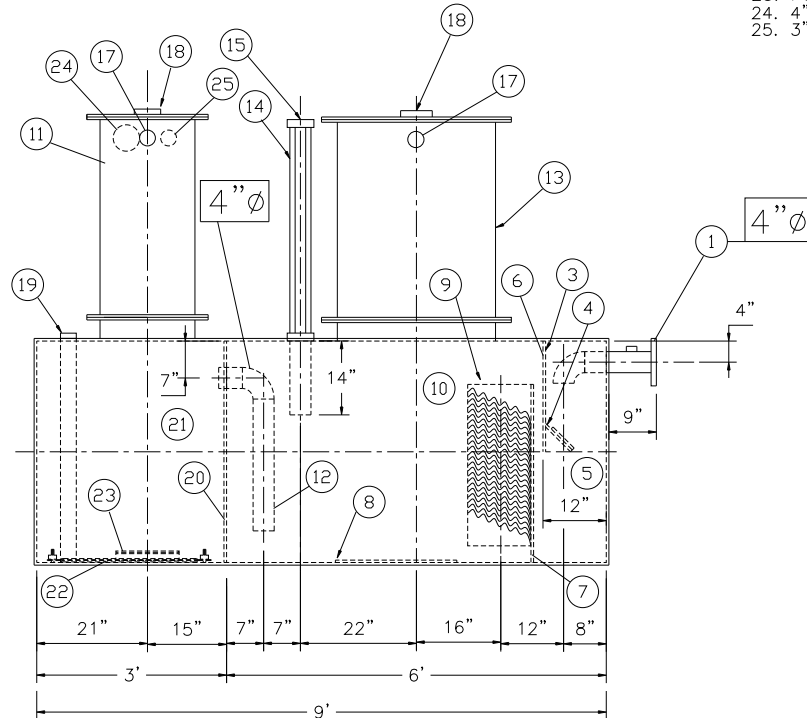
1. POLYURETHANE HIGHGUARD TANK IS NOT APPROVED FOR THE STORAGE OF HEATED PRODUCTS
2. CUSTOMER TO PROVIDE PUMPING INFORMATION FOR PROPER PUMP SIZING & PUMPOUT DESIGN.
3. 15000 VOLT SPARK TEST PROVIDED AT FACTORY
4. ALL VENT PIPING BY INSTALLER



## PLAN



END VIEW



ELEVATION

## PROVIDED EQUIPMENT

1. 150# R.F.S.O. FLANGE W/ 2" NPT FOR VENT
3. VELOCITY HEAD DIFFUSION BAFFLE
4. WEAR PLATE
5. SEDIMENT CHAMBER
6. UNDERFLOW BAFFLE
7. SLUDGE BAFFLE
8. STRIKER PLATES
9. PARALLEL CORRUGATED PLATE COALESCER
10. OIL/WATER SEPARATOR CHAMBER
11. RECTANGULAR MANWAY W/ BOLT-ON EXTENSION SHIPPED LOOSE
12. OUTLET DOWNCOMER
13. 30"Ø MANWAY WITH BOLT-ON EXTENSION SHIPPED LOOSE
14. 4"Ø FTG.FOR OIL PUMP-OUT WITH INTERNAL PIPE INSTALLED & RISER PIPE SHIPPED LOOSE
15. 2"Ø FTG. FOR LEVEL SENSOR WITH RISER PIPE SHIPPED LOOSE
16. LIFTING LUG
17. 2"Ø FTG. FOR VENT
18. 4"Ø FTG. FOR GAUGE WITH PLUG
19. 2"Ø FTG. FOR LEAK DETECTION
20. 1/4" BULKHEAD
21. EFFLUENT WATER CHAMBER
22. INTERNAL RIBBON ANODE
23. PUMP MOUNT
24. 4"Ø FTG. FOR PUMP CONDUIT
25. 3"Ø FTG. FOR EFFLUENT WATER CHAMBER LEVEL SENSOR

 <h1>Highland Tank</h1>	
U.S. Patent #4,722,800 #6,606,224	Canadian Patent # 1,296,263 # 2,389,065
350 GALLON OIL WATER SEPARATOR HT,HIGHGUARD,DOUBLE WALL,"J" SERIES	
CUSTOMER:	
PROJECT:	
QUOTE NO:	
CHK'D BY:	
SCALE: 1/2"=1'-0" 8-5-05	DWG. BY:
00350HGDWHT	