

## GENERAL SPECIFICATIONS

NO. REQ'D: (1)  
CAPACITY: 350 GALLON  
TYPE: HT, HIGHGUARD, SINGLE WALL, "G" SERIES  
MATERIAL: MILD CARBON STEEL  
FLOW RATE: 35 GPM

### GAUGE:

SHELL- 7 GA.

HEADS- 7 GA.

### SURFACE PREP:

SSPC NO.6 BLAST ALL EXTERIOR SURFACES

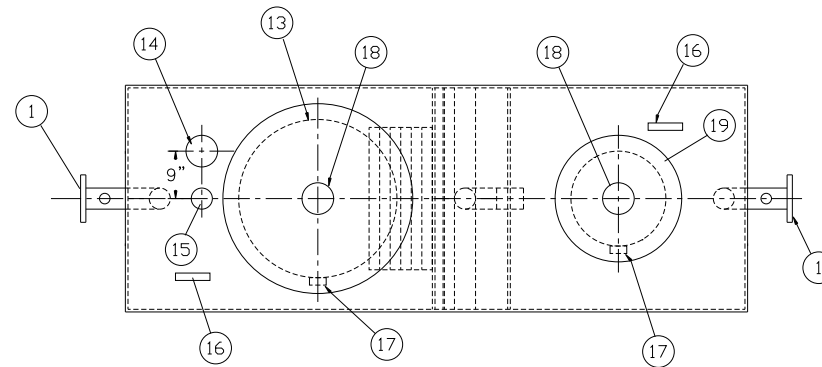
COATING:	MATERIAL	THICKNESS
EXTERIOR-	HIGHGUARD	(75 MILS)
INTERIOR-	NONE	

CONSTRUCTION : LAP FIT & WELD ALL EXTERIOR SEAMS

OPERATING PRESSURE : ATMOSPHERIC

### NOTES:

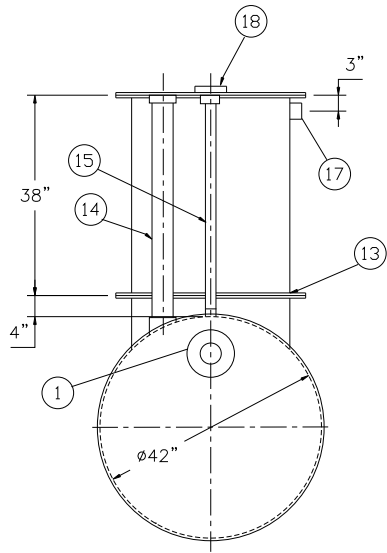
- POLYURETHANE HIGHGUARD TANK IS NOT APPROVED FOR THE STORAGE OF HEATED PRODUCTS
- ALL VENT PIPING BY INSTALLER
- 15000 VOLT SPARK TEST PROVIDED AT FACTORY



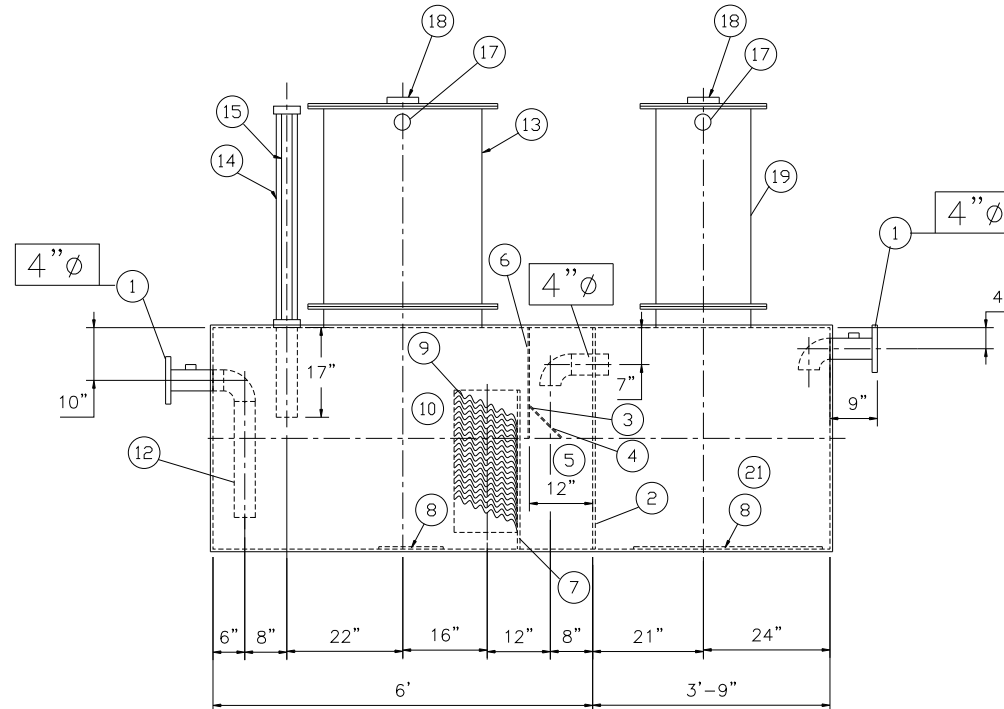
PLAN

## PROVIDED EQUIPMENT

- 150# R.F.S.O. FLANGE W/ 2" NPT FOR VENT
- 7 GA. BULKHEAD
- VELOCITY HEAD DIFFUSION BAFFLE
- WEAR PLATE
- SEDIMENT CHAMBER
- UNDERFLOW BAFFLE
- SLUDGE BAFFLE
- STRIKER PLATES
- PARALLEL CORRUGATED PLATE COALESCER
- OIL/WATER SEPARATOR CHAMBER
- SLUDGE CHAMBER
- OUTLET DOWNCOMER
- 30"Ø MANWAY WITH BOLT-ON EXTENSION SHIPPED LOOSE
- 4"Ø FTG. FOR OIL PUMP-OUT W/ INTERNAL PIPE INSTALLED AND RISER PIPE SHIPPED LOOSE
- 2"Ø FTG. FOR LEVEL SENSOR W/ RISER PIPE SHIPPED LOOSE
- LIFTING LUG
- 2"Ø FTG. FOR VENT TYP. BOTH MANWAYS
- 4"Ø FTG. FOR GAUGE WITH PLUG TYP. BOTH MANWAYS
- 18"Ø MANWAY WITH BOLT-ON EXTENSION SHIPPED LOOSE



END VIEW



ELEVATION

NOTE :  
ALL RIGHTS RESERVED. THIS DRAWING OR ANY PART THEREOF MUST NOT BE REPRODUCED IN ANY FORM WITHOUT THE WRITTEN PERMISSION OF HIGHLAND TANK.

HIGHLAND TANK SHALL BE RESPONSIBLE ONLY FOR ITEMS INDICATED ON THIS FABRICATION DRAWING UNLESS OTHERWISE NOTED. CUSTOMER IS RESPONSIBLE FOR VERIFYING CORRECTNESS OF SIZE / LOCATION OF FITTINGS , ACCESSORIES & COATINGS SHOWN ON THIS DRAWING

## REVISIONS



# Highland Tank

U.S. Patent #4,722,800 Canadian Patent # 1,296,263  
#6,606,224 # 2,389,065

350 GALLON OIL WATER SEPARATOR  
HT,HIGHGUARD,SINGLE WALL,"G" SERIES

CUSTOMER:

PROJECT:

QUOTE NO:

CHK'D BY:

SCALE: 1/2"=1'-0"

DATE: 10-12-05

DWG. BY:

DWG. NO.:

00350HGSWHTG