

GENERAL SPECIFICATIONS

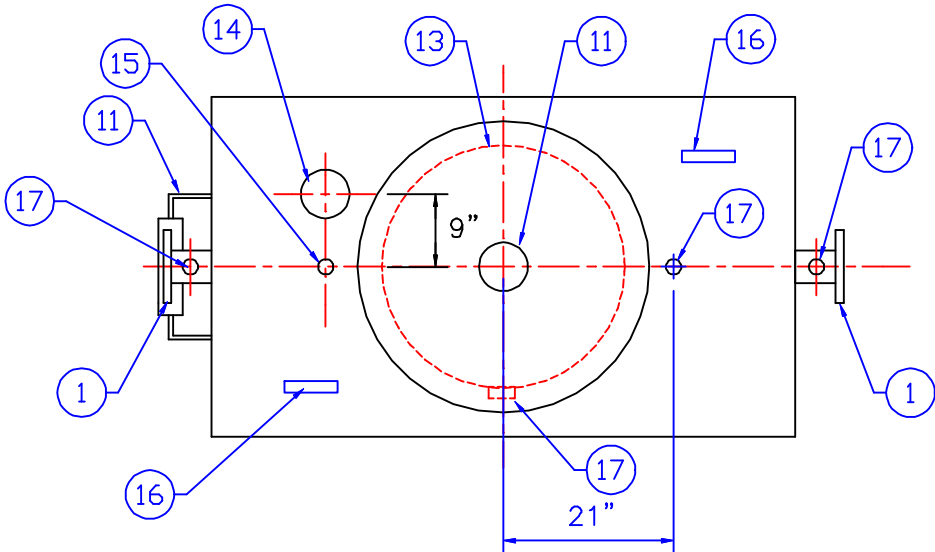
NO. REQ'D: (1)
CAPACITY: 350 GALLON OIL WATER SEPARATOR
TYPE: HTC, SINGLE WALL, ABOVEGROUND
MATERIAL: MILD CARBON STEEL
FLOW RATE: 35 GPM
GAUGE:
SHELL- 7 GA.
HEADS- 7 GA.
SURFACE PREP:
NONE

| COATING: | MATERIAL | THICKNESS |
|-----------|------------|---------------|
| EXTERIOR- | RED PRIMER | (MFG. SPECS.) |
| INTERIOR- | NONE | |

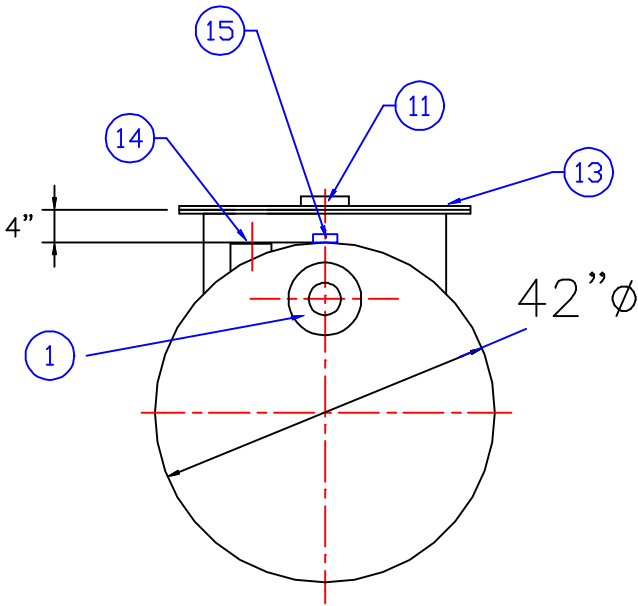
PAGE 1 OF 2 PAGES: SEE PAGE 2 FOR IMPORTANT GENERAL NOTES

PROVIDED COMPONENTS

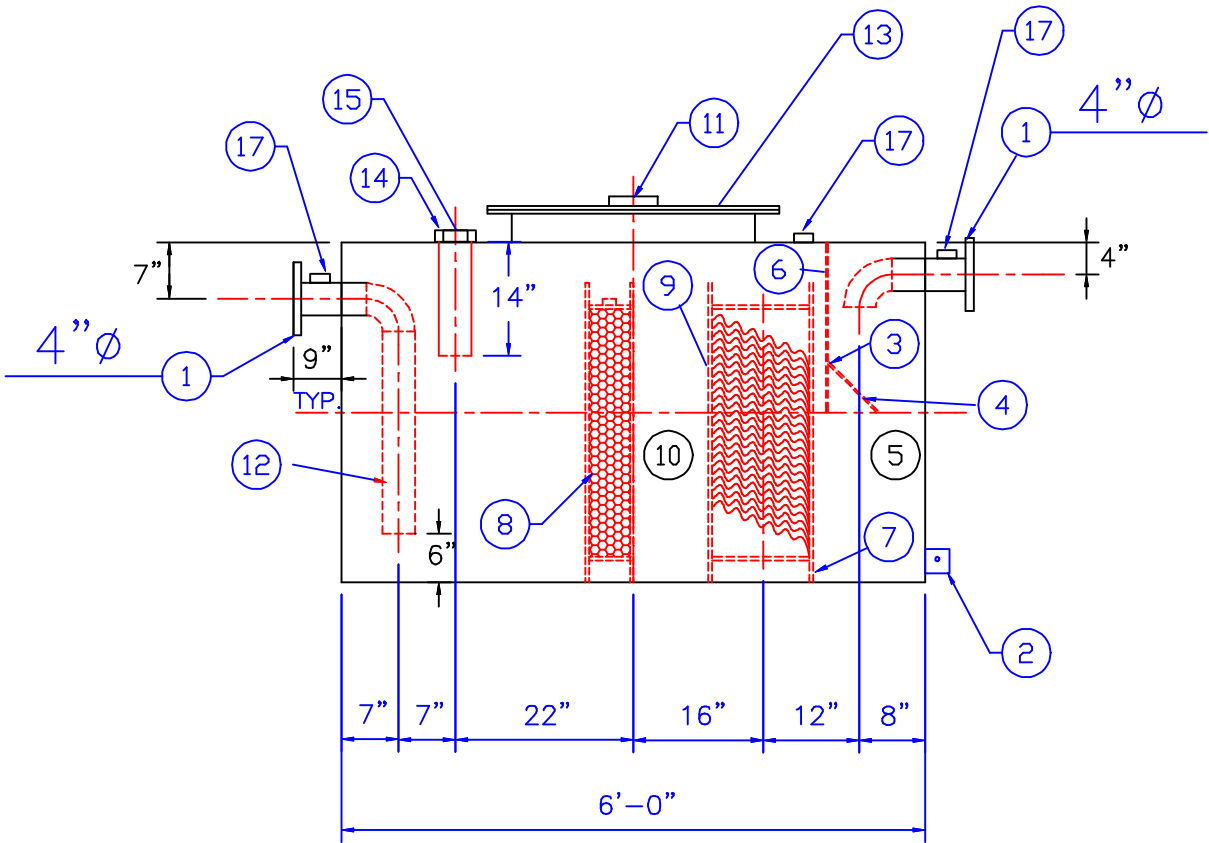
- 1. 150# R.F.S.O. FLANGE
- 2. 3" x 3" x 1/4" GROUNDING LUG WITH 1/2" HOLE IN CENTER
- 3. VELOCITY HEAD DIFFUSION BAFFLE
- 4. WEAR PLATE
- 5. SEDIMENT CHAMBER
- 6. UNDERFLOW BAFFLE
- 7. SLUDGE BAFFLE
- 8. 6" THICK COALESCER MATERIAL
- 9. PARALLEL CORRUGATED PLATE COALESCER
- 10. OIL/WATER SEPARATOR CHAMBER
- 11. 4" NPT FTG. FOR GAUGE WITH PLUG
- 12. OUTLET DOWNCOMER
- 13. 30"Ø MANWAY
- 14. 4"Ø NPT FTG.FOR OIL PUMP-OUT W/ INTERNAL PIPE INSTALLED
- 15. 2"Ø NPT FTG. FOR LEVEL SENSOR
- 16. LIFTING LUG
- 17. 2"Ø NPT FTG. FOR VENT



PLAN VIEW



END VIEW



ELEVATION

NOTE :
ALL RIGHTS RESERVED. THIS DRAWING OR ANY PART THEREOF MUST NOT BE REPRODUCED IN ANY FORM WITHOUT THE WRITTEN PERMISSION OF HIGHLAND TANK.
HIGHLAND TANK SHALL BE RESPONSIBLE ONLY FOR ITEMS INDICATED ON THIS FABRICATION DRAWING UNLESS OTHERWISE NOTED. CUSTOMER IS RESPONSIBLE FOR VERIFYING CORRECTNESS OF SIZE / LOCATION OF FITTINGS , ACCESSORIES & COATINGS SHOWN ON THIS DRAWING

| REVISIONS | | | | |
|------------|-------|----------------------|-----------|-----------|
| | | Highland Tank | | |
| CUSTOMER: | | | | |
| PROJECT: | | | | |
| QUOTE NO: | | | | CHK'D BY: |
| SCALE: | DATE: | DWG. BY: | DWG. NO.: | |
| 1/2"=1'-0" | | | 350SWAH | |