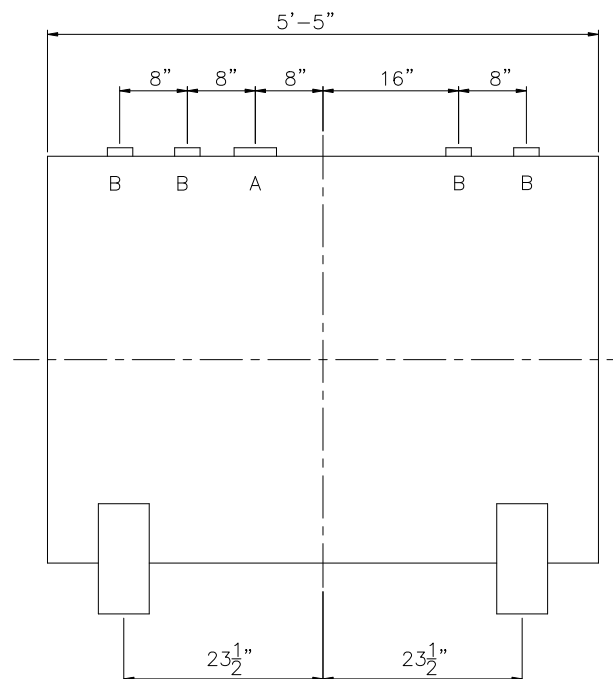


TOUCH UP OF FINISHED PAINT IS
REQUIRED BY INSTALLATION
CONTRACTOR. TOUCH UP PAINT SHIPPED
WITH TANK.



<u>LEGEND</u>	
A	4" FITTING (PRIMARY EMERGENCY VENT USE)
B	2" FITTING
C	3" x 3" PLATE w/ 1/2"Ø (MIN.) HOLE ON CENTER (GROUNDING LUG-ONE REQ'D)
D	—
E	—
F	—

