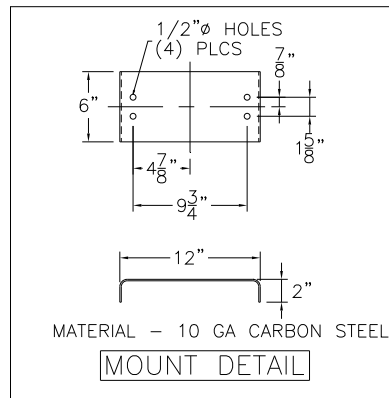
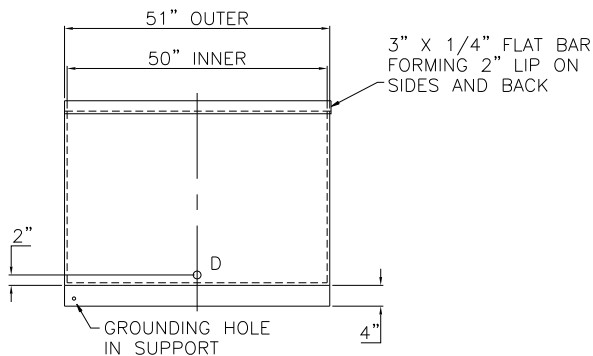
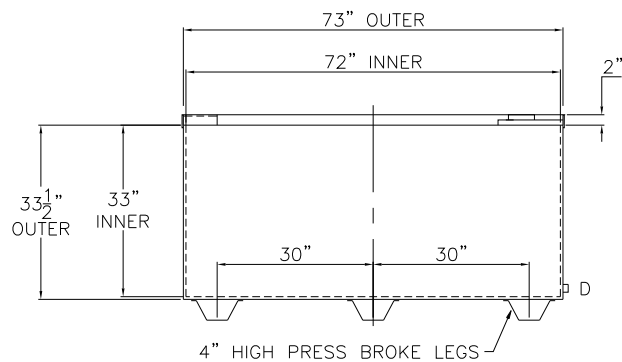
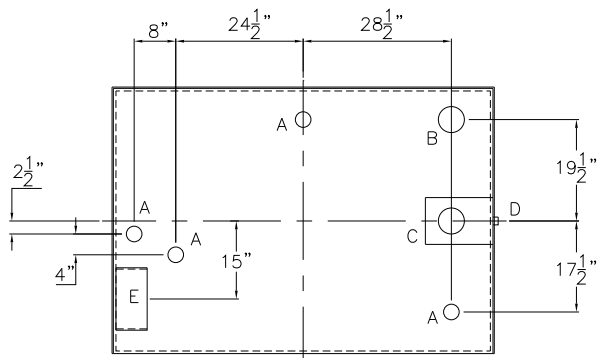


NOTE: ALL RIGHTS RESERVED. THIS DRAWING MUST NOT BE REPRODUCED IN ANY FORM WITHOUT THE WRITTEN PERMISSION OF HIGHLAND TANK®. HIGHLAND TANK® SHALL BE RESPONSIBLE ONLY FOR ITEMS INDICATED ON THIS FABRICATION DRAWING UNLESS OTHERWISE NOTED. CUSTOMER IS RESPONSIBLE FOR VERIFYING CORRECTNESS OF SIZE AND LOCATION OF FITTINGS, ACCESSORIES, AND COATINGS SHOWN ON THIS DRAWING.

TOUCH UP OF FINISHED PAINT IS REQUIRED BY INSTALLATION CONTRACTOR. TOUCH UP PAINT SHIPPED WITH TANK.




DESIGN DATA

CAPACITY	500 GALLONS
TYPE	DOUBLE WALL - TYPE I
NO. REQ.	-
OPERATING PRESSURE	ATMOSPHERIC
SPECIFIC GRAVITY	= 1.0
TANK MATERIAL	MILD CARBON STEEL
THICKNESS	ALL - 12 GAUGE
CONSTRUCTION	LAP WELD OUTSIDE ONLY DOUBLE WALL SIDES AND BOTTOM SINGLE WALL TOP
TANK TEST	INNER - 2 PSIG OUTER - 2 PSIG AND FULL VACUUM
INT. FINISH	NONE
EXT. FINISH	SHOP PRIMER
LABEL	UL 142 MAX TOP LOAD 60#
LEGEND	
A	2" FNPT CONNECTION
B	4" FNPT CONNECTION
C	4" FNPT CONNECTION MOUNTED IN INTERSTICE EXTENSION BOX - MARK WITH LABEL SECONDARY EMERGENCY VENT USE ONLY
D	1/2" FNPT CONNECTION THROUGH OUTER SHELL ONLY WITH BUTTON SITE GLASS
E	MOUNT PER DETAIL
F	-

REFERENCE DRAWINGS

PRESS BRAKE - DWG 21946A
LEG DETAIL - DWG WBLEG

△					
		Highland Tank®			
500 GAL DW BENCHTOP LUBE					
CUSTOMER:					
PROJECT:					
QUOTE NO:				CHK'D BY:	
SCALE:	DATE:	DWG. BY:	DWG. NO:		
1/2" = 12"			00500BTDW		