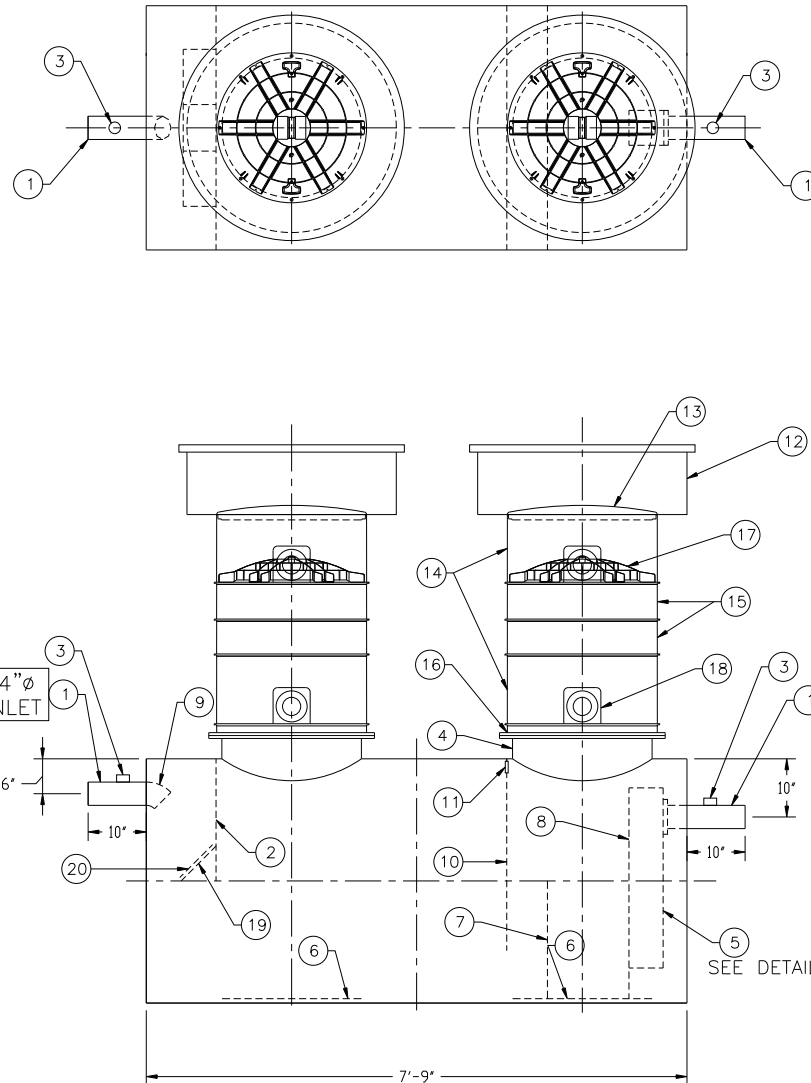
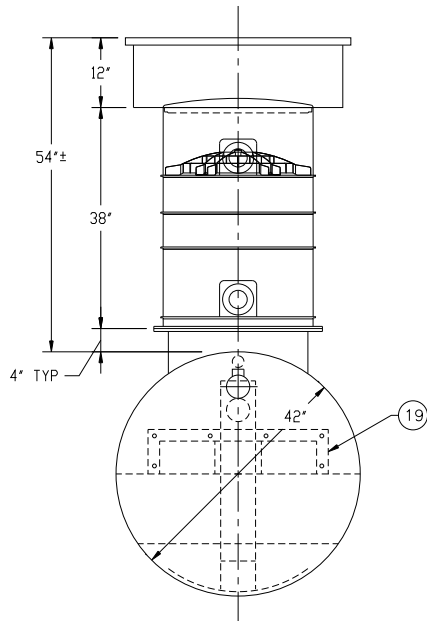


NOTE: BUOYANCY RESTRAINT NOT SHOWN  
CUSTOMER TO ADDRESS BEFORE INSTALLATION  
CONTACT HIGHLAND TANK FOR OPTIONS




NOTE :  
ALL RIGHTS RESERVED. THIS DRAWING OR ANY PART THEREOF MUST  
NOT BE REPRODUCED IN ANY FORM WITHOUT THE WRITTEN PERMISSION  
OF HIGHLAND TANK.  
HIGHLAND TANK SHALL BE RESPONSIBLE ONLY FOR ITEMS INDICATED  
ON THIS FABRICATION DRAWING UNLESS OTHERWISE NOTED. CUSTOMER  
IS RESPONSIBLE FOR VERIFYING CORRECTNESS OF SIZE / LOCATION  
OF FITTINGS , ACCESSORIES & COATINGS SHOWN ON THIS DRAWING

### GENERAL SPECIFICATIONS

MODEL: PGI-550-2  
NOMINAL CAPACITY: 550 GALLONS  
STATIC WATER CAPACITY: 426.2 GALLONS  
TYPE: SINGLE WALL, HIGHGUARD, UNDERGROUND  
MATERIAL: MILD CARBON STEEL  
GAUGE OF SHELL: 7 GA  
GAUGE OF HEADS: 7 GA  
GAUGE OF MATERIAL BASED ON MAXIMUM BURIAL DEPTH  
OF 60"  
LAP FIT AND WELD INTERIOR AND EXTERIOR SEAMS  
SURFACE PREP: SSPC-SP 10 BLAST INTERIOR SURFACES  
SSPC-SP 6 BLAST EXTERIOR SURFACES  
COATING, EXTERIOR: HIGHGUARD POLYURETHANE-75 MILS  
COATING, INTERIOR: POLYURETHANE - 15 MILS  
OPERATING PRESSURE: ATMOSPHERIC  
NOTE: MINIMUM OF ONE 2" VENT PIPE MUST BE  
INSTALLED IN EACH MANWAY RISER

### PROVIDED EQUIPMENT

1. 4"Ø PIPE STUB 10" LONG W/ 2" NPT FTG FOR VENT
2. UNDERFLOW BAFFLE - 7 GA
3. 2" NPT FTG FOR VENT
4. 24"Ø MANWAY FOR STACKABLE RISER
5. STEEL OUTLET DOWNCOMER BAFFLE W/ OPEN TOP FOR EFFLUENT SAMPLING
6. 1/4" STRIKER PLATE (AT ALL MANWAYS)
7. SLUDGE BAFFLE - 7 GA
8. VELOCITY DIFFUSION BREAKER
9. 4"Ø 45° DIFFUSION ELBOW
10. GREASE DAM - 7 GA
11. 2" OPENING FOR AIR CIRCULATION
12. 36"Ø GRADE-LEVEL MANWAY - SHIPPED LOOSE
13. 24"Ø PVC COVER
14. 24"Ø x 12" STACKABLE RISER - ALL STACKABLE RISER COMPONENTS ARE PRE-ASSEMBLED AND COMPLETE MANWAY RISER IS SHIPPED LOOSE
15. 24"Ø x 6" STACKABLE RISER
16. STACKABLE RISER ADAPTER RING & GASKET
17. STACKABLE RISER SAFETY SCREEN
18. KNOCKOUT FOR VENT PIPING - (4) KNOCKOUTS PER EACH 12" RISER SECTION
19. REMOVABLE DIFFUSION PLATE -1/4"
20. 8" x 8" WEAR PLATE -1/4"

REVISIONS	
	<b>Highland Tank®</b>
PASSIVE GREASE INTERCEPTOR 550 GALLON - DOUBLE BASIN	
CUSTOMER:	
PROJECT:	
QUOTE NO:	CHK'D BY:
SCALE: NTS	DATE: 11/2/10
DWG BY: MGS	PGI-550-2

DIMENSION TOLERANCE: ± 1"