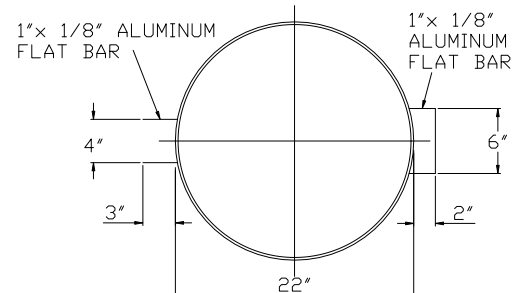
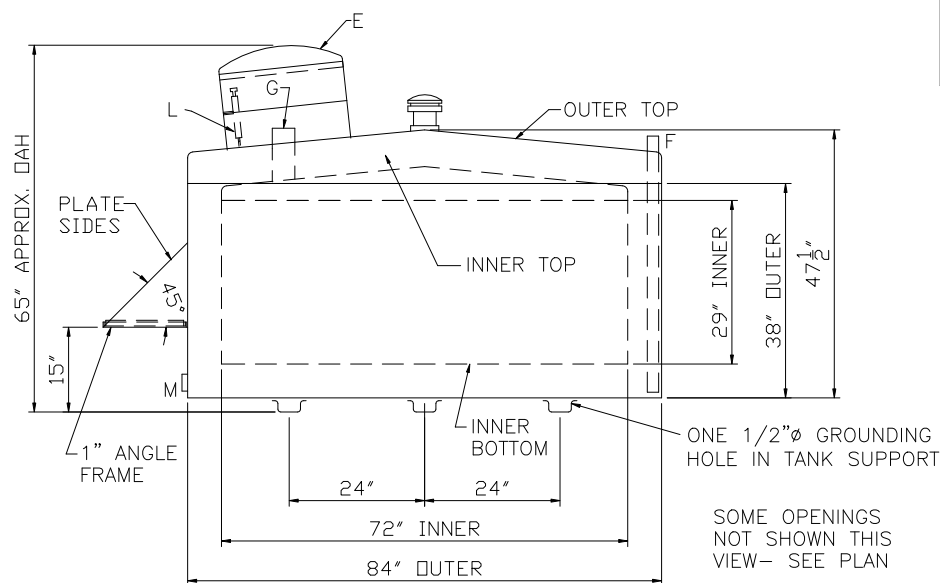
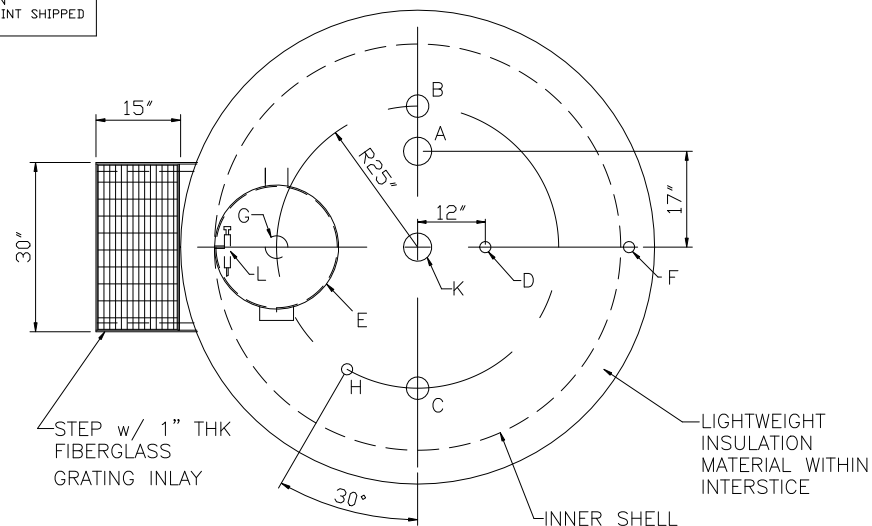


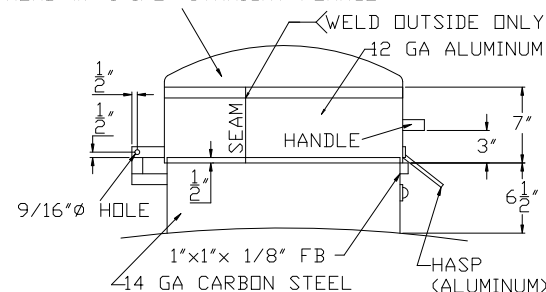
NOTE: ALL RIGHTS RESERVED. THIS DRAWING MUST NOT BE REPRODUCED IN ANY FORM WITHOUT THE WRITTEN PERMISSION OF HIGHLAND TANK. HIGHLAND TANK SHALL BE RESPONSIBLE ONLY FOR ITEMS INDICATED ON THIS FABRICATION DRAWING UNLESS OTHERWISE NOTED. CUSTOMER IS RESPONSIBLE FOR VERIFYING CORRECTNESS OF SIZE AND LOCATION OF FITTINGS, ACCESSORIES, AND COATINGS SHOWN ON THIS DRAWING.

TOUCH UP OF FINISHED PAINT IS REQUIRED BY INSTALLATION CONTRACTOR. TOUCH UP PAINT SHIPPED WITH TANK.

NOTE: STRIKER PLATES ARE NOT SUPPLIED ON FIREGUARDS UNLESS SPECIFIED.



12 GA ALUMINUM FLANGED & DISHED HEAD w/ 1 1/2" STRAIGHT FLANGE



NOTE- DO NOT CUT HOLE IN HEAD FOR CHAMBER, WELD CHAMBER TO OUTER HEAD

FILL CONNECTION NOT SHOWN, SEE TANK DRAWING

### DETAIL E

- SHIP LOOSE (INSTALLATION BY OTHERS)
- (1) KRUEGER GAUGE
  - (1) 2" Ø x 96" LONG GALVANIZED PIPE (TBE)
  - (1) 2" MUSHROOM VENT
  - (2) 4" EMERGENCY VENT

### SPECIFICATIONS

CAPACITY – 500 GALLONS
TANK MATERIAL – MILD CARBON STEEL
THICKNESS – INNER: 10 GA
THICKNESS – OUTER: 7 GA
INNER & OUTER TOP– STD FLANGED CONE
CONSTRUCTION – LAP WELD OUTSIDE ONLY
TANK TEST – PER UL 2085
INT. FINISH – NONE
EXT. FINISH – SP6 BLAST, FIREGUARD WHITE PAINT SYSTEM
TANK SUPPORTS– 7 GA x 4" WIDE X 2" DEEP PRESS BROKE "U"
LABEL – UL 2085 AND FIREGUARD PER STI
SPECIFIC GRAVITY = 1.0

### FITTING LEGEND

A	4" FG CPLG, PLUS 4" FEMALE THREADED EMERGENCY VENT
B	3" FG CPLG (SUCTION)
C	4" FG CPLG (SPARE)
D	2" FG CPLG (NORMAL VENT)
E	22" Ø CHAMBER WITH HINGED ALUMINUM LID, SEE DETAIL E (ACCESS TO FILL)
F	6" INTERSTITIAL MONITOR PIPE- END WITH MALE NPT
G	4" FG CPLG WITH LOCKING FILL CAP (FILL)
H	2" FG CPLG (GAUGE)
J	-
K	4" COUPLING WITH MALE THREADED EMERGENCY VENT THROUGH OUTER TOP ONLY- MARK WITH SPECIAL WARNING LABEL INTERSTITIAL EMERGENCY VENT
L	SINGLE STROKE HANDPUMP & BRK'T
M	2" FITTING FOR MFG PURPOSE ONLY



# Highland Tank

UNLESS NOTED, TOLERANCES ARE +/- 1"

## 500 GAL FIRE HOPPER™

CUSTOMER:

PROJECT:

QUOTE NO:

CHK'D BY:

SCALE: 1/2"=1'-0"

DATE:

DWG. BY:

DWG. NO.:

00500FGH