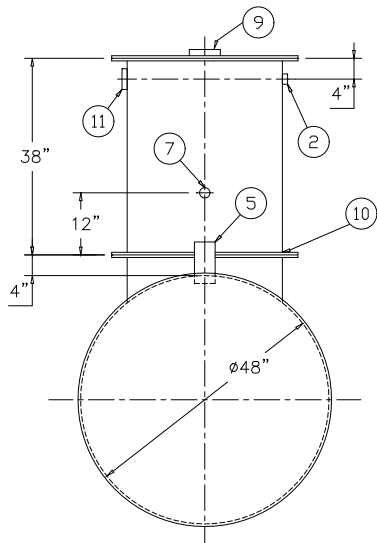


GENERAL SPECIFICATIONS

NO. REQ'D: (1)
CAPACITY: 500 GALLON
TYPE: HYDRO RAINWATER COLLECTION, HIGHGUARD, SINGLE WALL
MATERIAL: MILD CARBON STEEL
GAUGE:
SHELL- 7 GA.
HEADS- 7 GA.

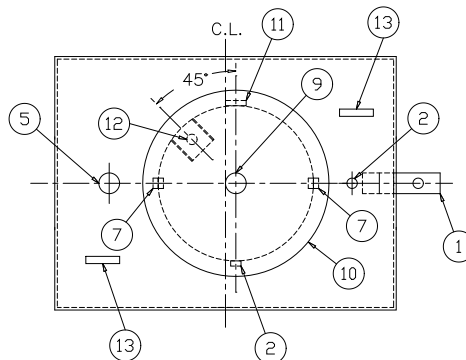
(BASED ON A 60" MAX. BURIAL DEPTH)
SURFACE PREP:
SSPC NO.6 BLAST ALL EXTERIOR SURFACES
COATING: MATERIAL THICKNESS
EXTERIOR- POLYURETHANE (75 MILS)
INTERIOR- NONE
CONSTRUCTION : LAP FIT & WELD ALL EXTERIOR SEAMS
OPERATING PRESSURE : ATMOSPHERIC

NOTES:
1. POLYURETHANE HIGHGUARD TANK IS NOT APPROVED FOR THE STORAGE OF HEATED PRODUCTS
2. ALL VENT PIPING BY INSTALLER
3. 15000 VOLT SPARK TEST PROVIDED AT FACTORY
4. LIFTING LUGS PLACED AS NEEDED PER FAB SHOP

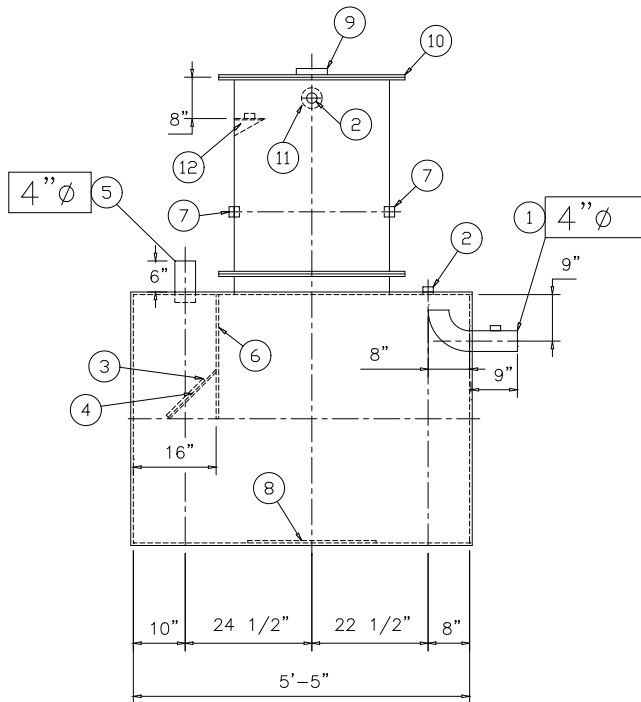


END VIEW

NOTE :
ALL RIGHTS RESERVED. THIS DRAWING OR ANY PART THEREOF MUST NOT BE REPRODUCED IN ANY FORM WITHOUT THE WRITTEN PERMISSION OF HIGHLAND TANK.
HIGHLAND TANK SHALL BE RESPONSIBLE ONLY FOR ITEMS INDICATED ON THIS FABRICATION DRAWING UNLESS OTHERWISE NOTED. CUSTOMER IS RESPONSIBLE FOR VERIFYING CORRECTNESS OF SIZE / LOCATION OF FITTINGS , ACCESSORIES & COATINGS SHOWN ON THIS DRAWING



PLAN



ELEVATION

PROVIDED EQUIPMENT

1. 4"Ø PIPE STUB W/ 2" NPT FOR VENT (OVERFLOW SKIMMER)
2. 2"Ø FTG. FOR VENT
3. VELOCITY HEAD DIFFUSION BAFFLE (REMOVABLE)
4. WEAR PLATE
5. 4"Ø PIPE STUB (INLET)
6. UNDERFLOW BAFFLE
7. 2"Ø FULL CPLG. FOR PUMP MOUNTING
8. STRIKER PLATES
9. 4"Ø FTG. FOR GAUGE WITH PLUG
10. 30"Ø MANWAY WITH BOLT-ON EXTENSION SHIPPED LOOSE
11. 4"Ø FTG. FOR PUMP & LEVEL SENSOR CONDUIT
12. 2"Ø FTG. W/ MOUNT FOR LEVEL SENSOR
13. LIFTING LUG

REVISIONS			
 Highland Tank			
U.S. Patent #4,722,800 Canadian Patent # 1,296,263 #6,606,224 # 2,389,065			
500 HYDRO RAINWATER COLLECTION HIGHGUARD, SINGLE WALL			
CUSTOMER:			
PROJECT:			
QUOTE NO:			CHK'D BY:
SCALE: 1/2"=1'-0"	DATE: 4/16/10	DWG. BY:	DWG. NO.: